



## Buckingham Palace Road, SW1W

£1,180,000

A beautifully proportioned flat situated on the third floor (with lift) of a prestigious portered building conveniently located for the transport facilities of Victoria and shops and eateries of Pimlico Road and Sloane Square, originally built by Berkeley Homes in 1998/9.

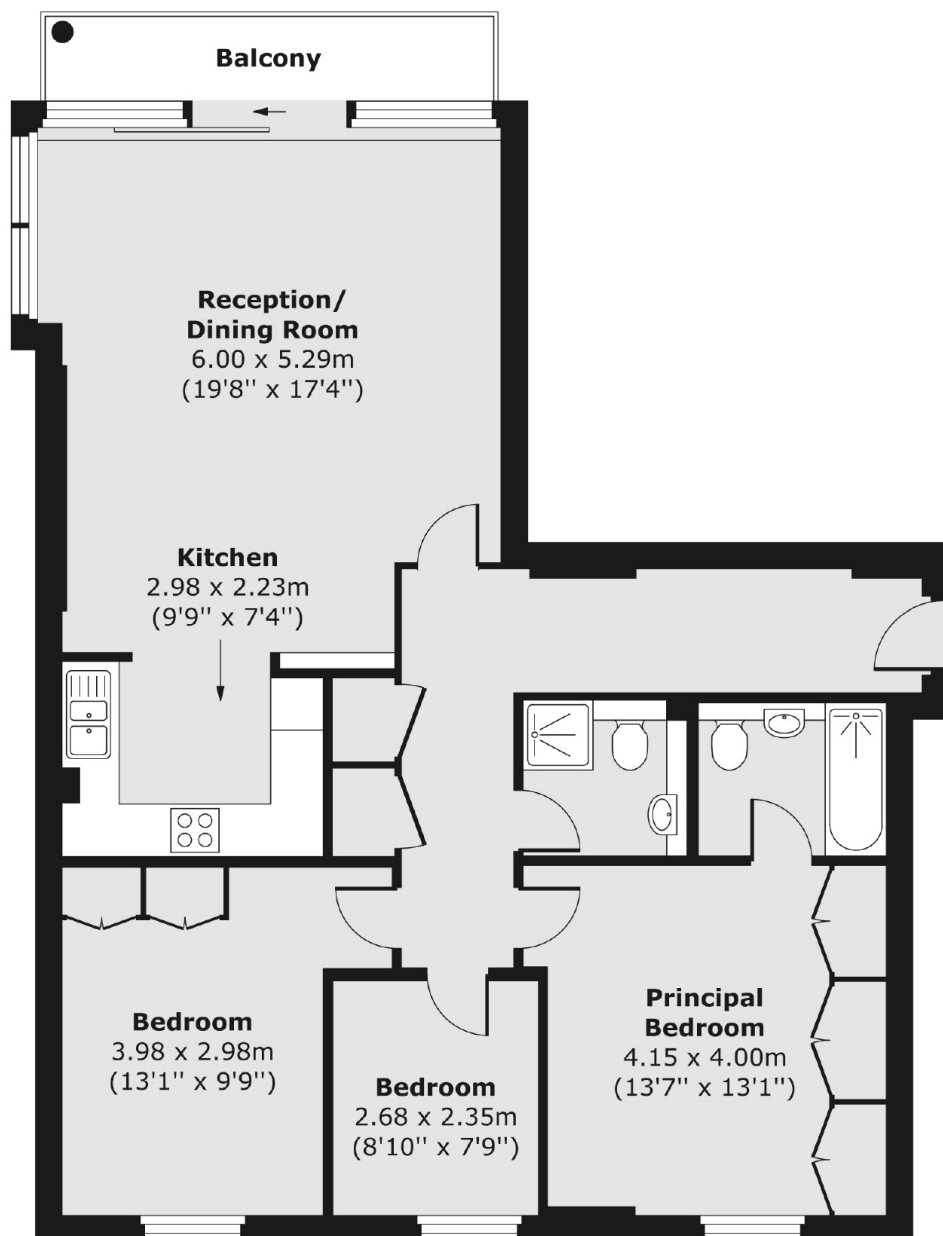
Consort Rise House is located on Buckingham Palace Road between Elizabeth Bridge and Pimlico Road making it convenient for Victoria, Belgravia, Sloane Square and Pimlico. Victoria Station offers mainline rail services including the Gatwick Express and underground service on the Victoria line and District and Circle Line; The Jubilee line is one stop from Victoria at Green Park.

### Features

- Three Bedrooms
- Two Bathrooms (one en suite)
- Large Private Balcony
- Secure Underground Parking
- Private Residents Gym
- 24 Hour Concierge

# Buckingham Palace Road, London, SW1W

## Third Floor



Total area (approx.) 96.00 sq. m (1,033 sq. ft)

Balcony area (approx.) 4.97 sq. m (53 sq. ft)