



## Marsham Street, SW1P

£1,435,000

A splendid penthouse with roof top views towards Parliament situated in the heart of Westminster, the block benefits from 24-hour porter service, parking, a secure bike store and a wonderful roof garden.

Transport links are excellent with Westminster, Pimlico, St James Park tube and Victoria transport hub all within easy reach. A variety of fashionable shops, bars and restaurants can be found on nearby Victoria Street.

### Features

- 24-Hour Porters
- Parking
- Roof Garden
- Three Bedrooms
- Share of Freehold
- Balcony



## Marsham Street, SW1P

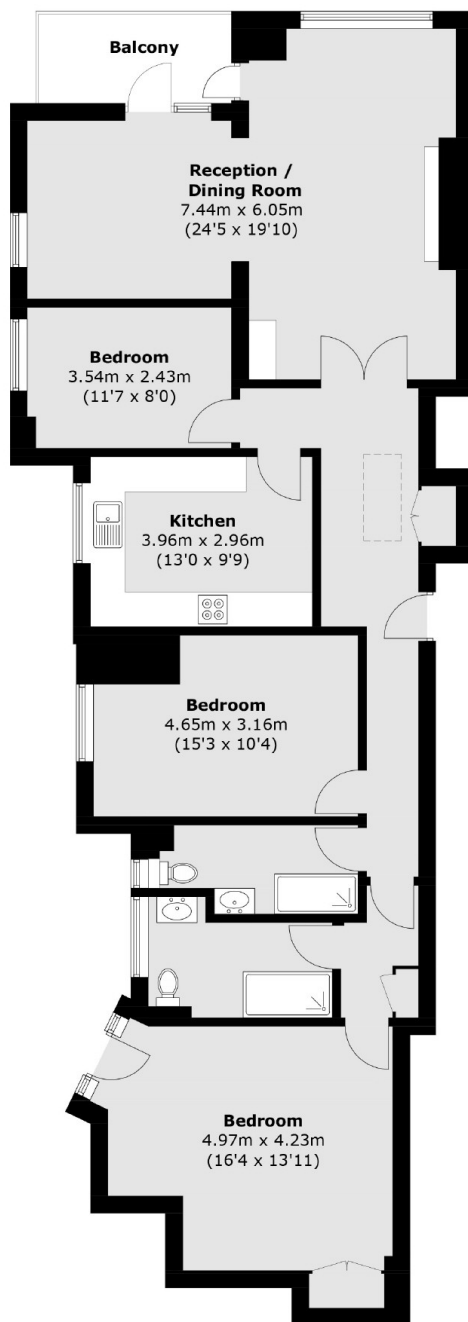
Westminster Gardens is a 1930s block positioned behind The Tate Gallery, a much sought-after development in an excellent location and with first-rate porter service it would make a delightful London home or a convenient pied-à-terre.

The apartment is designed in a contemporary style with simple cornices and double-glazed windows. There are three good size double bedrooms, with a Juliet balcony in the principle bedroom, two newly fitted bathrooms, a contemporary kitchen with integrated appliances and a breakfast bar, double reception room with a dining area leading to a private balcony.

There is plenty of storage throughout the apartment with a walk-in wardrobe in the principle bedroom. The lease is in excess of 900 years and there is a share of freehold.



# Marsham Street, London, SW1P



Total area (approx.): 122.2 sq. m (1315.4 sq. ft)

Balcony area (approx.): 5.2 sq. m (55.9 sq. ft)