



St. Georges Square, SW1V

£550,000

This property is situated on the ground floor of this particularly imposing period building, it is presented in excellent condition throughout and comprises of a generous reception room, one large double bedroom with built in storage, a well equipped modern open-plan kitchen and a contemporary bathroom.

St George's Square is a beautiful garden square within a few minutes of Pimlico tube station and the river Thames, as well as within easy reach of all the local amenities of Victoria and the surrounding area.

Features

- Excellent Location
- Ground Floor
- Period Features
- Open-plan kitchen
- Modern Fittings
- One Double Bedroom

St. Georges Square, London, SW1V

Flat 2, 35 St. George's Square, London, SW1V 3QN

Approximate Gross Internal Area = 41.1 sq m / 442 sq ft

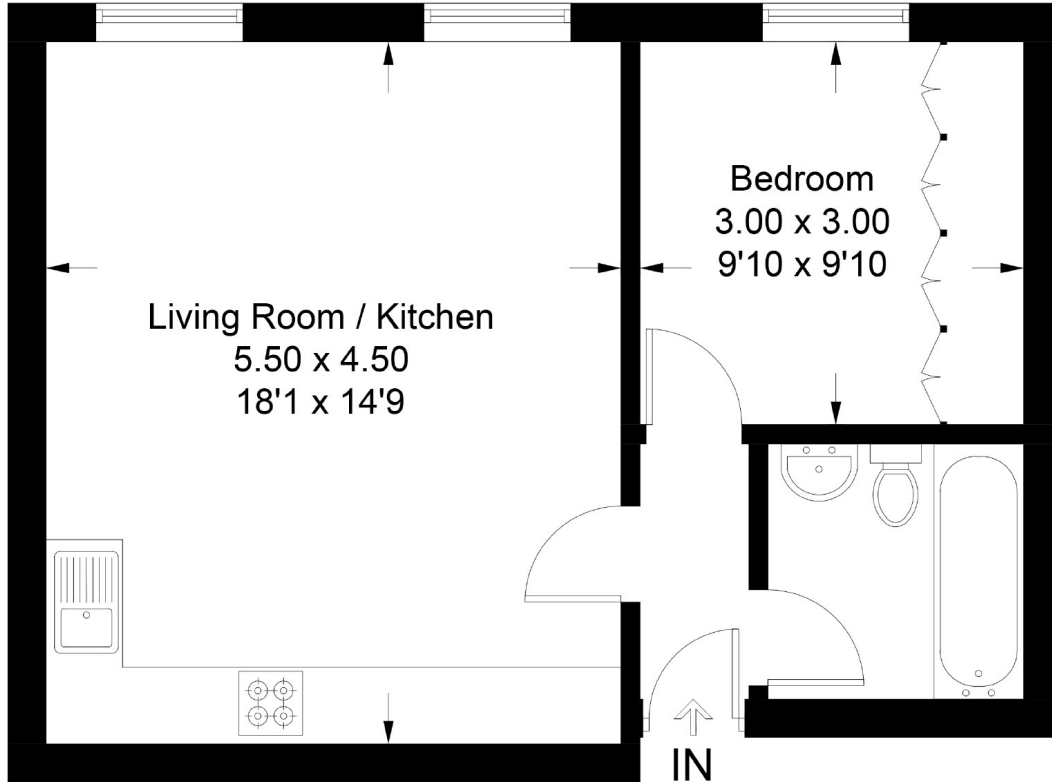


Illustration for identification purposes only, measurements are approximate, not to scale. floorplansUsketch.com © (ID722884)