



4 Miltons Mews West Street, Axminster, EX13 5FE

Guide Price £138,000 Leasehold

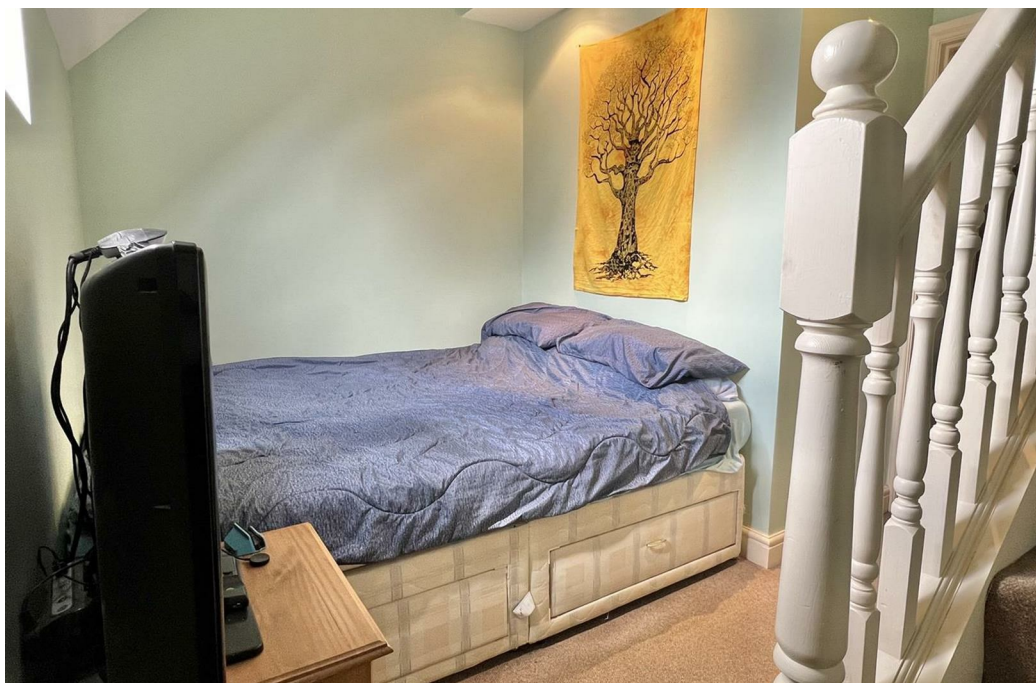
- Maisonette Apartment
- One Reception Room
- Town Centre Location
- Family Bathroom
- Two Bedrooms

4 Miltons Mews West Street, Axminster EX13 5FE

A two bedroom, one reception room two storey terraced apartment located in the centre of Axminster. The ground floor accommodation comprises of a entrance hall and open planned kitchen/diner and lounge area. Stairs lead to the first floor accommodation comprising of the second bedroom, bathroom and mezzanine master bedroom.



Council Tax Band: A



Entrance Hall

White single pane doors leads to accommodation and stairs with wooden hand rail leads to the first floor accommodation.

Open Plan Lounge/Kitchen

18'11" x 10'11" (5.79 x 3.35)

The kitchen area comprises of a range of cream fronted cupboards and drawers with lightly coloured tiled splashbacks and wooden work tops throughout. A stainless steel sink and drainer with front facing uPVC double glazed window with deep window sill underneath leads to space and plumbing for a washing machine. Continuing round to electric hob and oven with extractor fan above and end breakfast bar.

The lounge area features a rear facing uPVC double glazed window with display sill and radiator underneath. A storage cupboard is located under the stairs.

First Floor Landing

White wooden doors leads to the accommodation with detector overhead.

Bedroom 2

8'3" x 11'1" (2.54 x 3.38)

Dual aspect with rear facing uPVC double glazed velux window and side facing uPVC double glazed window with display sill. Radiator and aerial connections.

Bathroom

4'11" x 7'4" (1.5 x 2.26)

Comprising of a white suite throughout with lightly coloured tiled splashback walls. Featuring a panelled bath unit with electric shower, low level hand flush w.c. and hand basin with fitted cupboard and drawers underneath and wall mounted mirror. Extractor fan overhead.

Mezzanie Bedroom

This spilt level mezzanine bedroom features a lower floor with front facing uPVC double glazed Velux window with radiator underneath. Stairs with wooden balustrade leads to the upper floor that features aerial connection and alcove storage with water tank accessed by a sliding door.

Agents Notes

Tenure: Leasehold

Lease Length: 999 year lease starting from 2007 with approximately 982 years remaining

Yearly contribution to building insurance of £280.00

Local Authority: East Devon District Council:

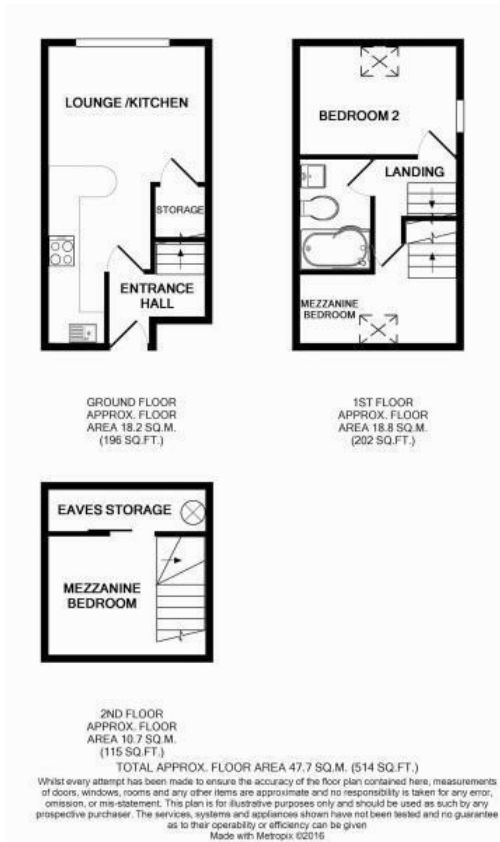
Tax Band: A

Utilities: Mains water, drainage and electric. Electric heating

Broadband: Superfast fibre broadband with a FTTC connection is available.

Standard broadband with a ADSL connection is available.

Mobile phone coverage: For more information can be found checker.ofcom.org.uk



Directions

Milton Mews is located behind our offices in West Street on the right hand side.

Viewings

Viewings by arrangement only. Call 01297 631199 to make an appointment.

Council Tax Band

A

