



38 The Cedars Park Road, Newcastle Upon Tyne, NE4 7DX

Offers Over £100,000

Hive Estates is delighted to present this beautifully finished two bedroom seventh floor apartment, perfectly positioned just off Scotswood Road in the heart of Newcastle. Offering stylish interiors, generous living space, and superb city views, this home is an ideal first-time buy.

Step into the bright and spacious open-plan living and kitchen area, where floor to ceiling windows flood the space with natural light. The living room features elegant herringbone style wood effect flooring, picture frame wall panelling, and a calming neutral décor, creating a warm and inviting atmosphere. There's ample space for a dining area, making it perfect for both everyday living and entertaining. The modern kitchen is thoughtfully designed with beige high gloss cabinetry, sleek black laminate worktops, and a classic white tiled splashback. It offers excellent storage and plenty of room for freestanding appliances, blending both practicality and style.

The master bedroom is a generous, light filled space with a full wall of windows offering impressive city views. A built in window ledge provides the perfect spot for a cosy seating nook or reading area. Finished with neutral tones and soft beige carpets, it's a peaceful retreat. The second bedroom is also well proportioned and versatile, ideal for use as a guest room, home office, or dressing room. It benefits from the same tasteful décor and large windows that give a bright, open feel. The contemporary bathroom is beautifully finished with floor to ceiling marble effect tiles, a walk-in waterfall shower, a sleek WC and basin, and stylish black fittings. There's also built in storage for added convenience.

Externally, the property includes one allocated parking bay and access to well maintained communal grounds. The location is incredibly convenient with easy access to Newcastle city centre, the A1, and local landmarks such as the Utilita Arena and The Life Centre. A range of shops, cafes, and restaurants are also just moments away.

Perfect for first time buyers, this modern and spacious apartment combines city living with comfort and style ready to move straight into.

Lounge/Diner/Kitchen 24'4" x 11'2" (7.42 x 3.42)

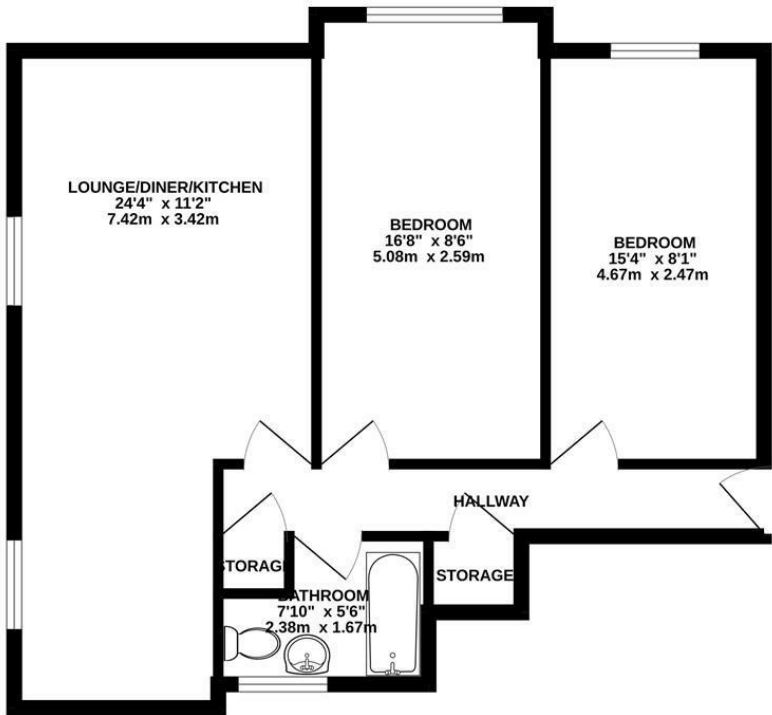
Bedroom 1 16'7" x 8'5" (5.08 x 2.59)

Bedroom 2 15'3" x 8'1" (4.67 x 2.47)

Bathroom 7'9" x 5'5" (2.38 x 1.67)

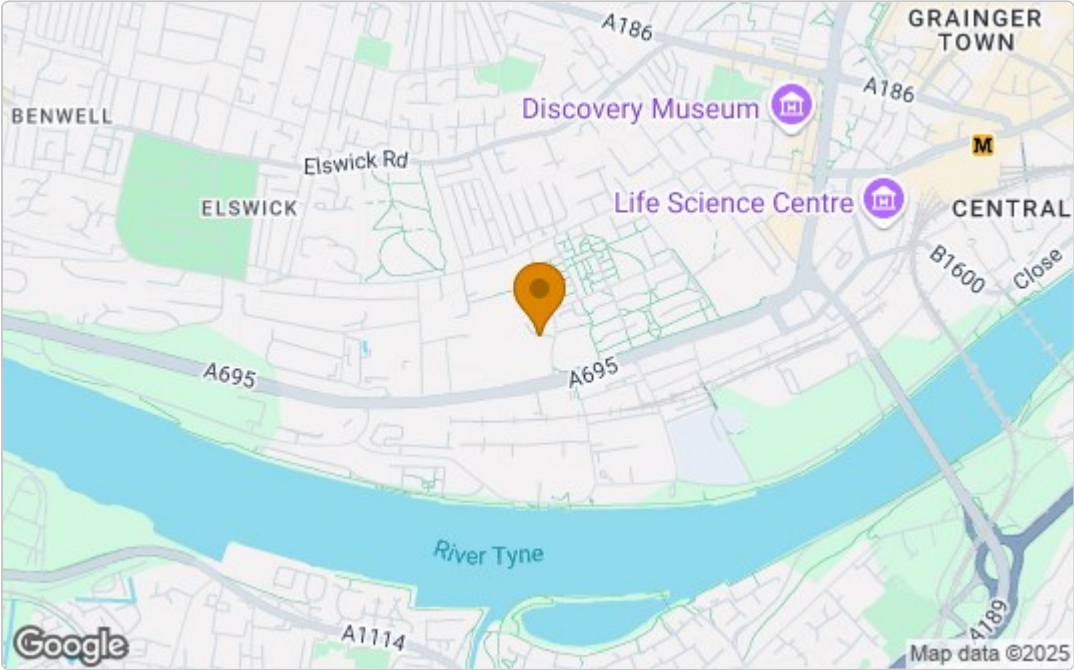
Floor Plan

7TH FLOOR
612 sq.ft. (56.9 sq.m.) approx.



THE CEDAR NE4 7DX
TOTAL FLOOR AREA: 612 sq.ft. (56.9 sq.m.) approx.
Whilst every attempt has been made to ensure the accuracy of the floorplan contained here, measurements of doors, windows, rooms and any other items are approximate and no responsibility is taken for any error, omission or mis-statement. This plan is for illustrative purposes only and should be used as such by any prospective purchaser. The services, systems and appliances shown have not been tested and no guarantee as to their operability or efficiency can be given.
Made with Metropix ©2025

Area Map



These particulars, whilst believed to be accurate are set out as a general outline only for guidance and do not constitute any part of an offer or contract. Intending purchasers should not rely on them as statements of representation of fact, but must satisfy themselves by inspection or otherwise as to their accuracy. No person in this firms employment has the authority to make or give any representation or warranty in respect of the property.

Energy Efficiency Graph

