

60 Gladstone Street, Hebburn, NE31 2XD

Offers Over £90,000

Hive Estates welcomes to the market this fantastic three bedroom upper flat in Hebburn, recently refurbished to a high standard this home boasts fresh paint and new carpets throughout, creating a bright and warm atmosphere.

Once inside, stairs lead you to the spacious landing that provides direct access to all bedrooms and the lounge. With tall ceilings and large windows, the flat exudes a sense of space and light. The three bedrooms provide ample rooms for relaxation and personalisation. The lounge leads through to the kitchen, fully fitted with elegant beige cabinetry and grey metro tiling. With integrated appliances such as an oven, hob and extractor fan. To the rear of the home is the family bathroom. Fully tiled and equipped with a shower over bath, WC and wash basin. Externally, there is a private rear yard accessed through French doors, offering a lovely secluded outdoor space with a gate for easy access to the side street.

This upper flat would make a great place to live, in a great location close to transport links, shops and amenities. With a current rental yield of 9.33%.

Kitchen 8'10" x 8'2" (2.70 x 2.50)

Lounge/Diner 13'7" x 12'3" (4.15 x 3.75)

Bedroom 1 13'7" x 13'5" (4.15 x 4.10)

Bedroom 2 9'4" x 10'9" (2.85 x 3.30)

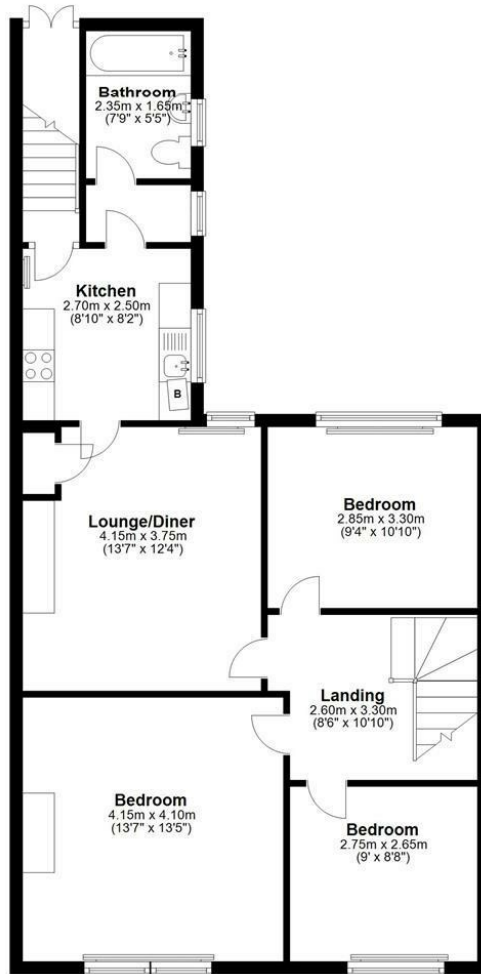
Bedroom 3 9'0" x 8'8" (2.75 x 2.65)

Bathroom 7'8" x 5'4" (2.35 x 1.65)

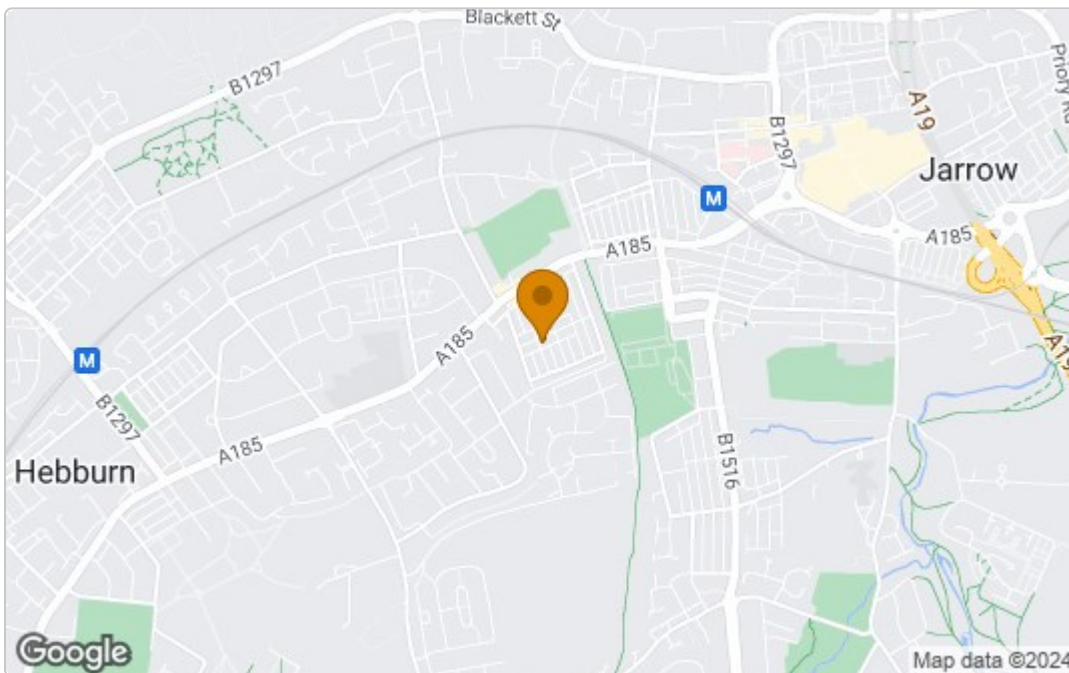
Landing 8'6" x 10'9" (2.60 x 3.30)

First Floor

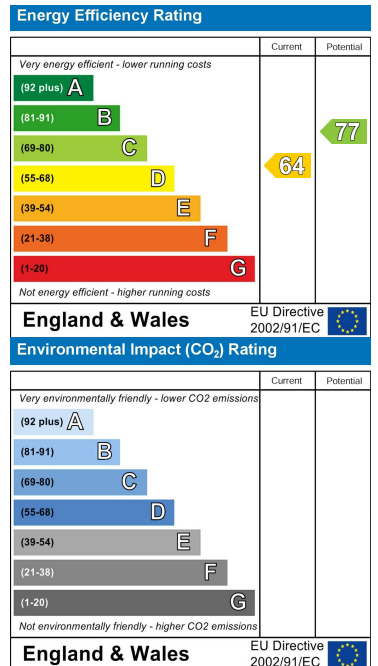
Approx. 75.1 sq. metres (807.9 sq. feet)



Area Map



Energy Efficiency Graph



These particulars, whilst believed to be accurate are set out as a general outline only for guidance and do not constitute any part of an offer or contract. Intending purchasers should not rely on them as statements of representation of fact, but must satisfy themselves by inspection or otherwise as to their accuracy. No person in this firm's employment has the authority to make or give any representation or warranty in respect of the property.