



156 Queen Alexandra Road, North Shields, NE29 9AL

Offers Over £220,000

Hive Estates welcomes to the market this beautifully presented upper-floor, three-bedroom flat in the heart of North Shields, offering excellent access to local amenities, transport links, and a direct route to Tynemouth Beach. A standout feature of this home is its generous south-facing garden with an elevated sun terrace, astro-turfed lawn, and a dedicated seating area an exceptional outdoor space for an upper-floor flat.

Upon reaching the first floor, you are welcomed onto a spacious landing that sets the tone for the rest of the home. To the rear sits the bright and expansive lounge/diner. A skylight and large windows fill the room with natural light, while double doors open onto an elevated decked area with steps down to the generous south-facing garden. Double doors connect the lounge/diner to the kitchen, creating a smooth and versatile flow throughout the living space.

The kitchen offers plentiful cupboard space, a built-in wine rack, integrated microwave, and room for free-standing appliances including a washing machine, dishwasher and fridge-freezer. A substantial double Rangemaster gas oven completes the space.

The main bedroom is a spacious and elegant retreat positioned to the front, showcasing original features including a ceiling rose and crown moulding. The two remaining bedrooms are also of generous size, filled with natural light and offering flexibility for guests, children, or working from home.

The bathroom is finished to a high standard, featuring a walk-in shower with a double shower head and a separate bathtub for relaxation.

Outside, the property boasts a superb south-facing garden with an elevated sun terrace, astro-turfed lawn, and a dedicated seating area perfect for outdoor dining, entertaining, and soaking up the sunshine.

Perfectly located close to shops, cafés, excellent transport links, and North Shields town centre, this flat offers a superb blend of convenience and coastal living.

Lounge 13'1" x 17'2" (4.00 x 5.25)

Kitchen 10'7" x 12'1" (3.25 x 3.70)

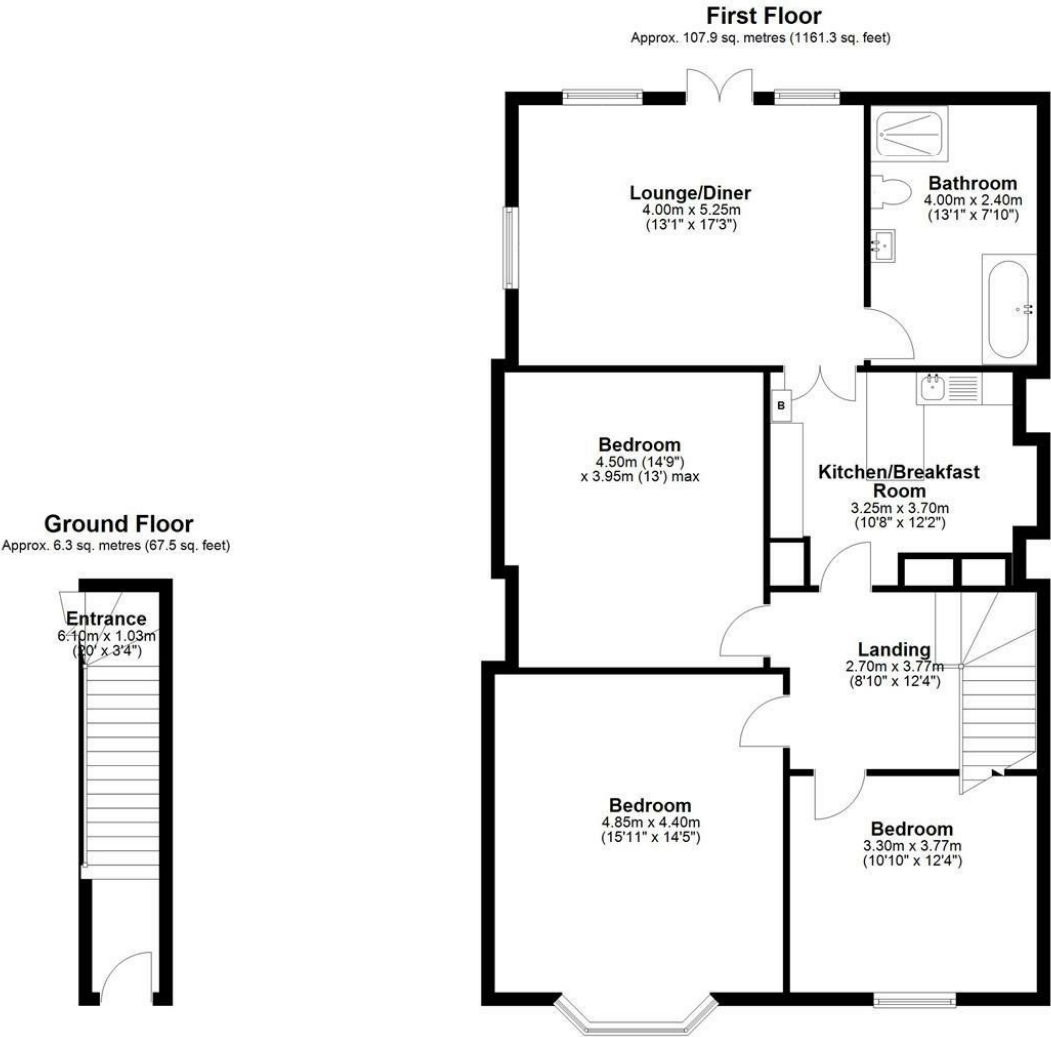
Bedroom 1 15'10" x 14'5" (4.85 x 4.40)

Bedroom 2 14'9" x 12'11" (4.50 x 3.95)

Bathroom 13'1" x 7'10" (4.00 x 2.40)

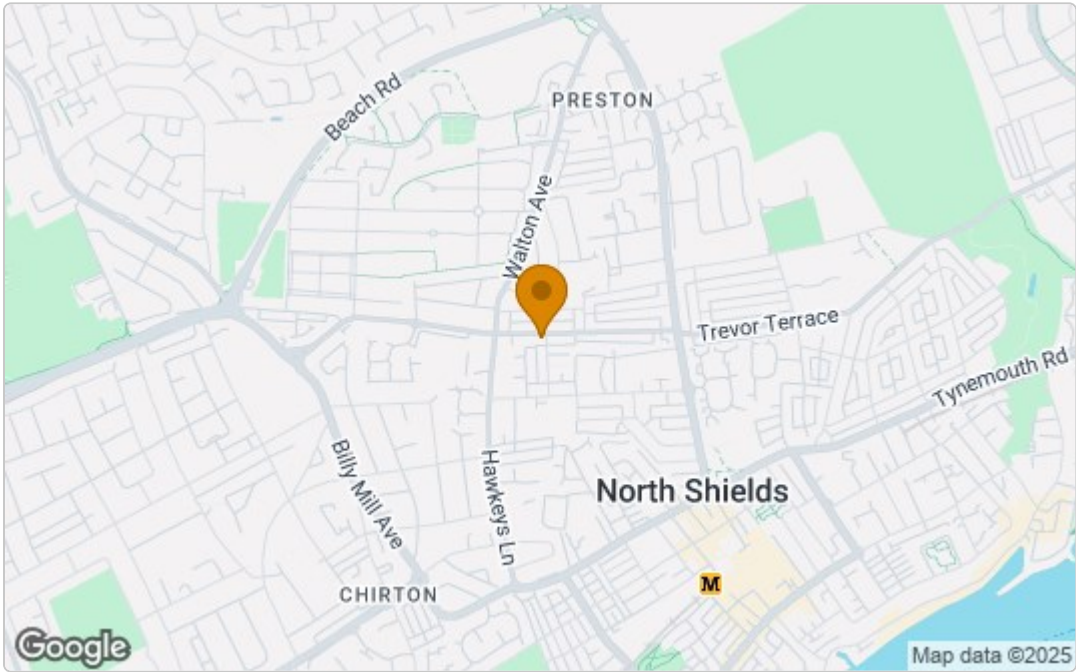
Bedroom 3 10'9" x 12'4" (3.30 x 3.77)

Floor Plan

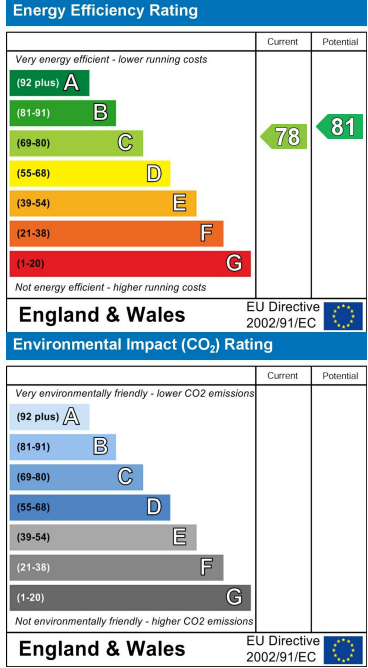


Total area: approx. 114.2 sq. metres (1228.8 sq. feet)

Area Map



Energy Efficiency Graph



These particulars, whilst believed to be accurate are set out as a general outline only for guidance and do not constitute any part of an offer or contract. Intending purchasers should not rely on them as statements of representation of fact, but must satisfy themselves by inspection or otherwise as to their accuracy. No person in this firms employment has the authority to make or give any representation or warranty in respect of the property.