



7 Picton Manor, Newcastle upon Tyne, NE1 8XG

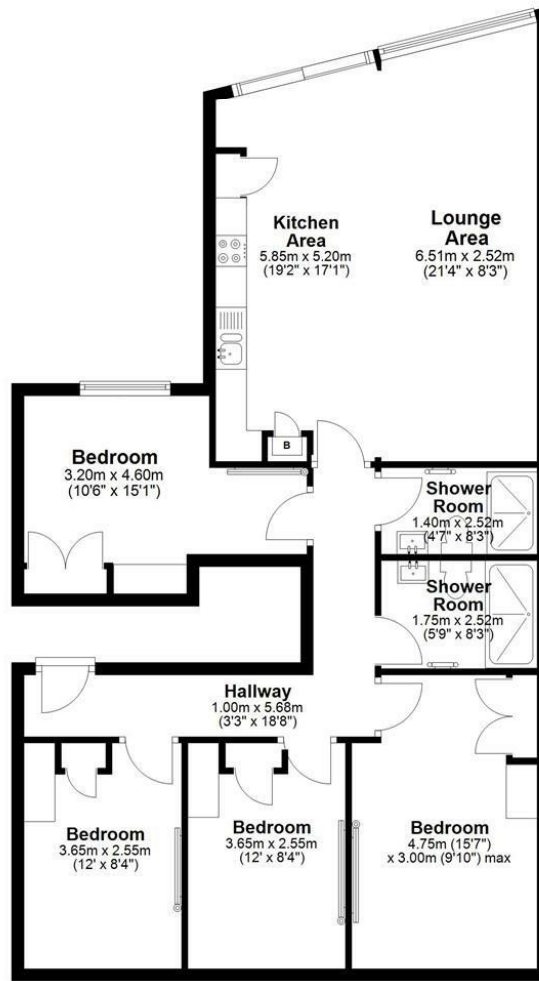
£660 Per Week

Available August 2026 | £165 per person per week inclusive of all bills | Hive Estates presents to the market a gorgeous four bed flat is perfect for a group of students looking for city centre living. Located on the second floor of a beautiful Georgian building, the flat features four large double bedrooms, one shower room and one bathroom. The rear wall of the open plan living area is fully glazed, providing access to the roof terrace and allowing for lots of light and a great city view. All bedrooms are furnished with bespoke built-in wardrobe and desk units with USB sockets and bespoke storage. Each bedroom includes a wall-mounted TV and an ottoman double bed. Both bathrooms are fully tiled in designer styles. The kitchen is fully integrated with appliances including a dishwasher and washer dryer and the living room features a large wall-mounted TV.

Floor Plan

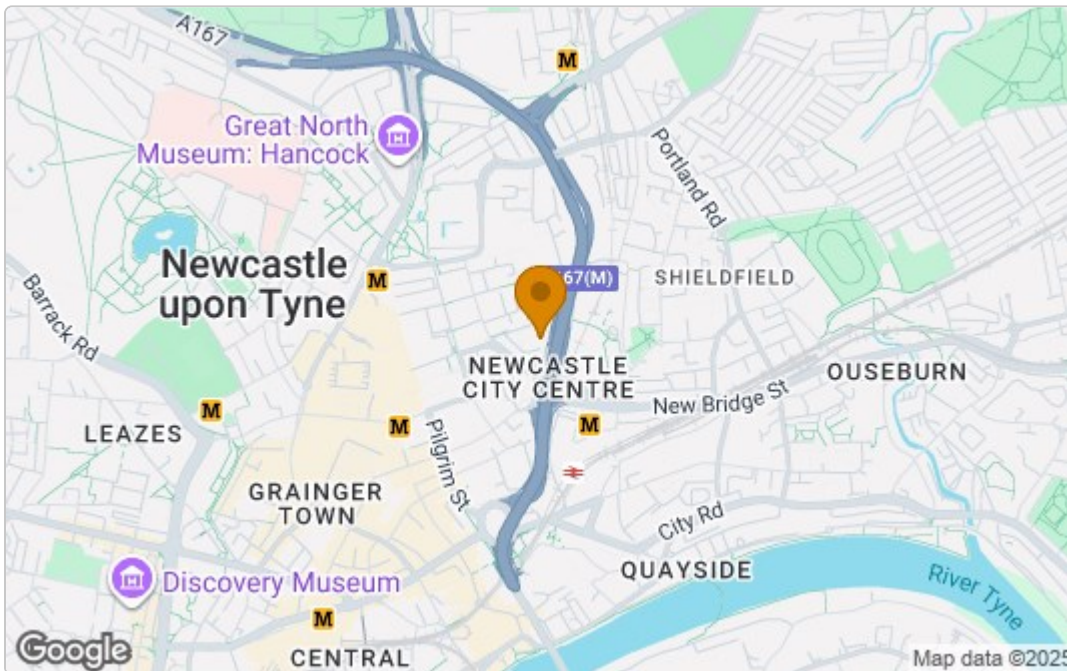
Second Floor

Approx. 97.5 sq. metres (1049.6 sq. feet)



Total area: approx. 97.5 sq. metres (1049.6 sq. feet)

Area Map



Energy Efficiency Graph

Energy Efficiency Rating		Current	Potential
Very energy efficient - lower running costs			
(92 plus) A			
(81-91) B		84	85
(69-80) C			
(55-68) D			
(39-54) E			
(21-38) F			
(1-20) G			
Not energy efficient - higher running costs			
England & Wales		EU Directive 2002/91/EC	
Environmental Impact (CO ₂) Rating		Current	Potential
Very environmentally friendly - lower CO ₂ emissions			
(92 plus) A			
(81-91) B		86	87
(69-80) C			
(55-68) D			
(39-54) E			
(21-38) F			
(1-20) G			
Not environmentally friendly - higher CO ₂ emissions			
England & Wales		EU Directive 2002/91/EC	

These particulars, whilst believed to be accurate are set out as a general outline only for guidance and do not constitute any part of an offer or contract. Intending purchasers should not rely on them as statements of representation of fact, but must satisfy themselves by inspection or otherwise as to their accuracy. No person in this firm's employment has the authority to make or give any representation or warranty in respect of the property.