



8 Preston View Apartments, North Shields, NE29 9JW

Offers Over £240,000

Hive Estates presents this high-spec, design-led apartment, set within a period Victorian conversion just moments from the coast. With tall ceilings, large sash windows, and an abundance of natural light, it blends period architecture with clean modern interiors and a luxury finish throughout.

The open-plan living, kitchen and dining space is the heart of the home. Framed by original proportions and finished with wood-effect tiled flooring and nickel contemporary radiators, it's a bright, contemporary space designed for modern living. The sleek two-tone handleless kitchen features quartz worktops, a central island, and a range of integrated NEFF appliances including oven, venting hob with ductless extraction, fridge freezer and dishwasher.

Both bedrooms are generously sized and softly styled, with plush carpet underfoot and space for fitted wardrobes and storage. The main bathroom connects to both rooms and is finished with full-height tiling, a walk-in rainfall shower, concealed WC, and wall-mounted basin with matte black fittings. A separate guest WC adds extra convenience, with oak-effect tiles and contemporary fixtures.

With allocated parking, secure gated access, intercom entry and electric heating via modern radiators, this standout apartment offers low-maintenance luxury in a characterful setting. Ideally located for coastal walks, local caf  s and direct access to the city via the Coast Road.

Kitchen/Lounge/Diner 22'11" x 20'0" (7.00 x 6.10)

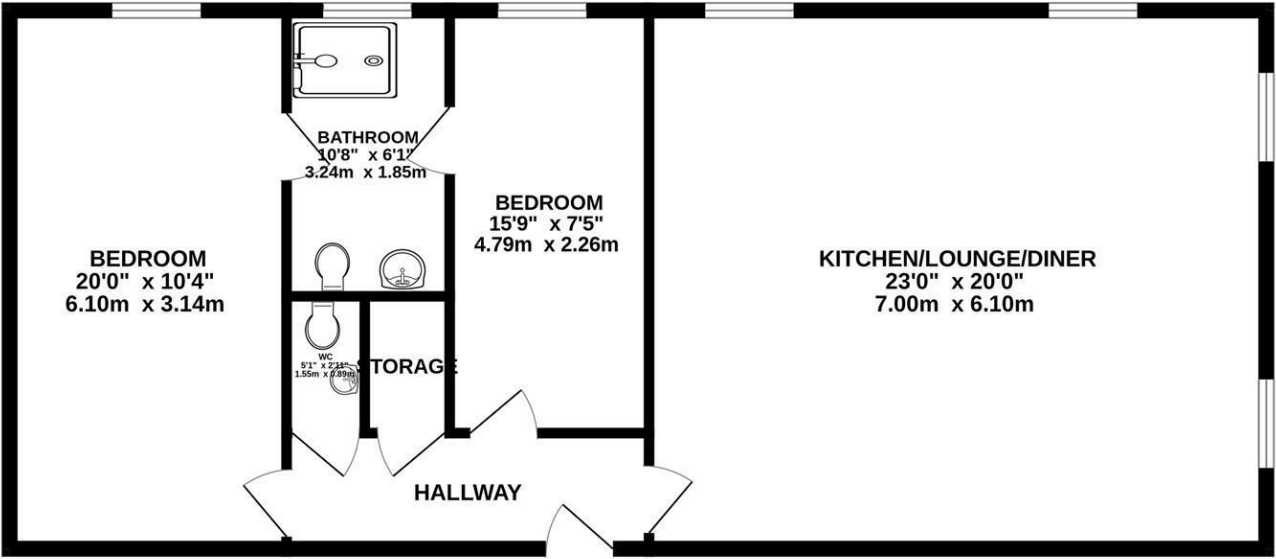
Bedroom 1 20'0" x 10'3" (6.10 x 3.14)

Bedroom 2 15'8" x 7'4" (4.79 x 2.25)

Bathroom 10'7" x 6'0" (3.24 x 1.85)

WC 5'1" x 2'11" (1.55 x 0.89)

1ST FLOOR
935 sq.ft. (86.9 sq.m.) approx.

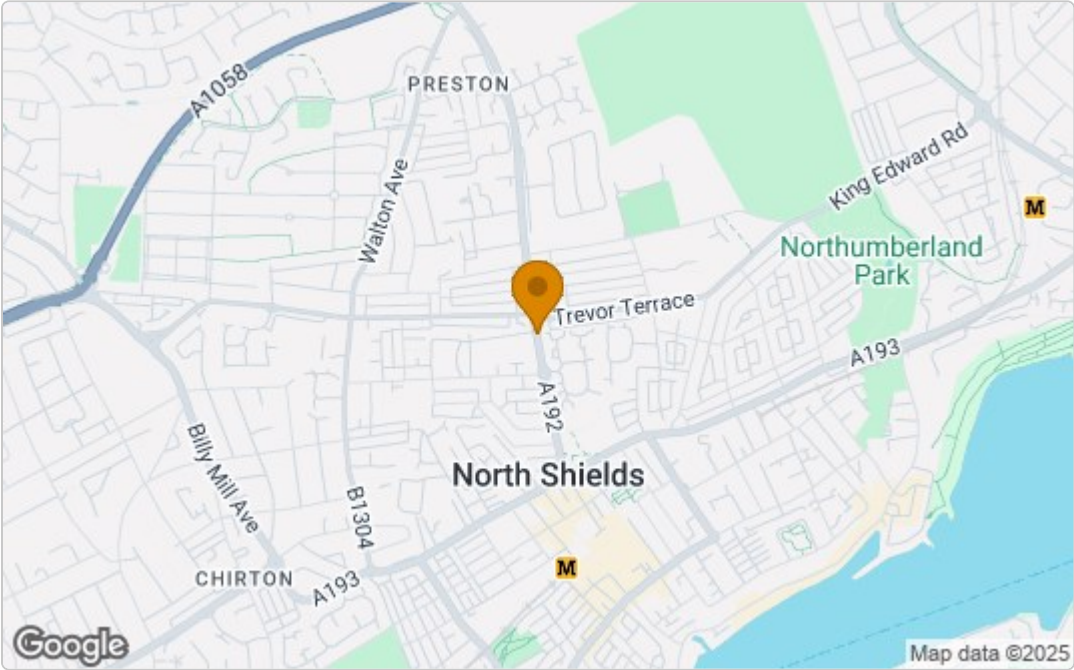


PRESTON VIEW NE29 9JW

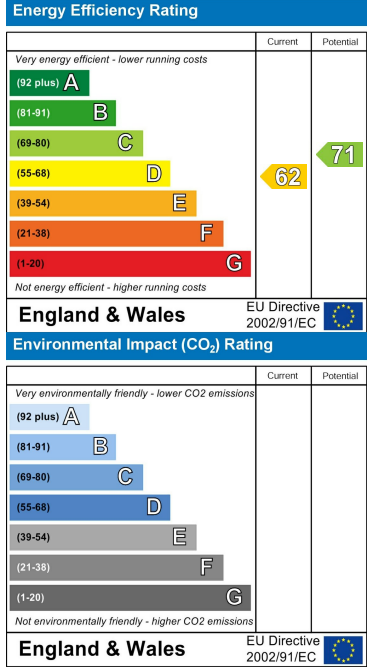
TOTAL FLOOR AREA : 935 sq.ft. (86.9 sq.m.) approx.

Whilst every attempt has been made to ensure the accuracy of the floorplan contained here, measurements of doors, windows, rooms and any other items are approximate and no responsibility is taken for any error, omission or mis-statement. This plan is for illustrative purposes only and should be used as such by any prospective purchaser. The services, systems and appliances shown have not been tested and no guarantee as to their operability or efficiency can be given.
Made with Metropix ©2025

Area Map



Energy Efficiency Graph



These particulars, whilst believed to be accurate are set out as a general outline only for guidance and do not constitute any part of an offer or contract. Intending purchasers should not rely on them as statements of representation of fact, but must satisfy themselves by inspection or otherwise as to their accuracy. No person in this firms employment has the authority to make or give any representation or warranty in respect of the property.