



89 Cartington Terrace, Newcastle Upon Tyne, NE6 5SH

Offers Over £325,000

Hive Estates are delighted to welcome to the market this extended and beautifully presented three-bedroom Victorian terrace, full of original charm and modern design.

The ground floor has been thoughtfully reconfigured and extended to create a bright open-plan kitchen, dining, and living space complete with parquet hardwood flooring, a reading nook, and bifold doors leading to a Mediterranean-style sun terrace. The stylish kitchen features a central island with breakfast bar and comes fully equipped with integrated appliances, including a dishwasher, fridge freezer, washing machine, oven, and hob. The kitchen has been relocated to the original dining room, forming the sociable heart of the home.

Upstairs, there are three well-proportioned bedrooms each with original fireplaces and a modern family bathroom with a shower over bath, WC, wash basin, and elegant travertine mosaic tiles.

Original features including ornate cornicing and fireplaces have been carefully restored, blending beautifully with contemporary finishes throughout.

Located in a fantastic part of Heaton, the property benefits from close proximity to Heaton Park and the vibrant local scene along Heaton Road, which offers a great selection of independent cafes, shops, and restaurants. Families will appreciate the excellent local schools and nurseries nearby, while professionals will enjoy easy access to public transport links, including Chillingham Road Metro station and frequent bus routes. With a quick commute to Newcastle city centre and the coast, plus nearby green spaces and cycle routes, this home is perfectly positioned for both convenience and lifestyle.

This is a perfect blend of period charm and modern living in one of Heaton's most desirable areas.

Living room 16'1" x 12'3" (4.91 x 3.74)

Kitchen 13'8" x 12'3" (4.17 x 3.74)

Dining room 15'6" x 10'0" (4.74 x 3.05)

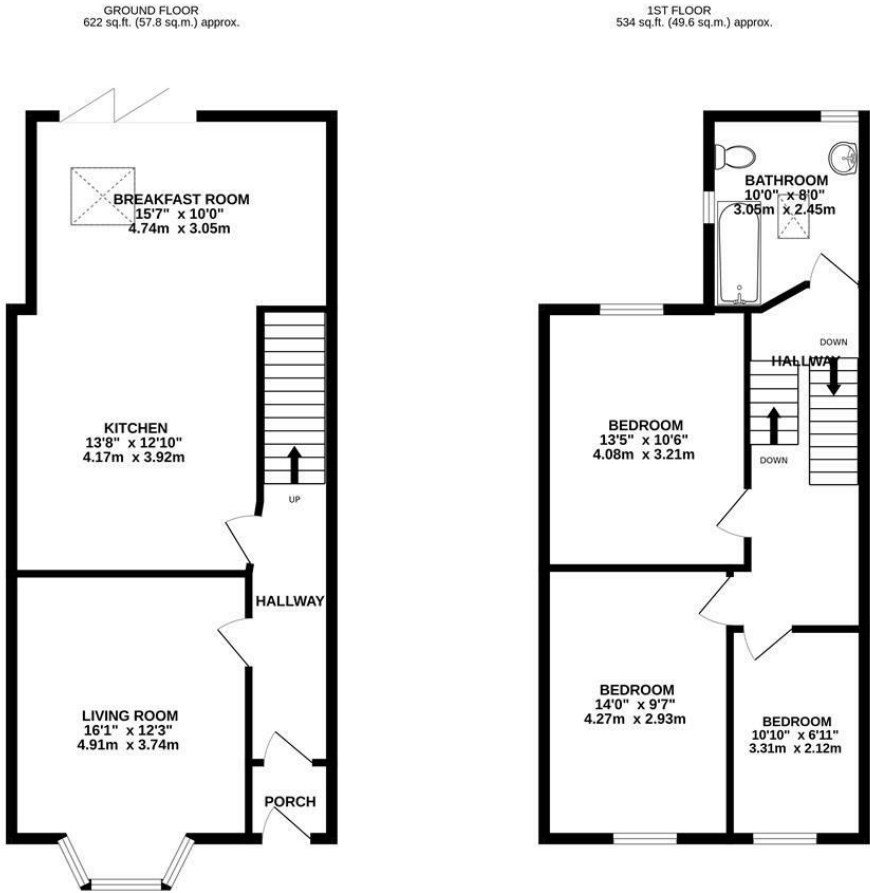
Bedroom 1 13'4" x 10'6" (4.08 x 3.21)

Bedroom 2 14'0" x 9'7" (4.27 x 2.93)

Bedroom 3 10'10" x 6'11" (3.31 x 2.12)

Bathroom 10'0" x 8'0" (3.05 x 2.45)

Floor Plan

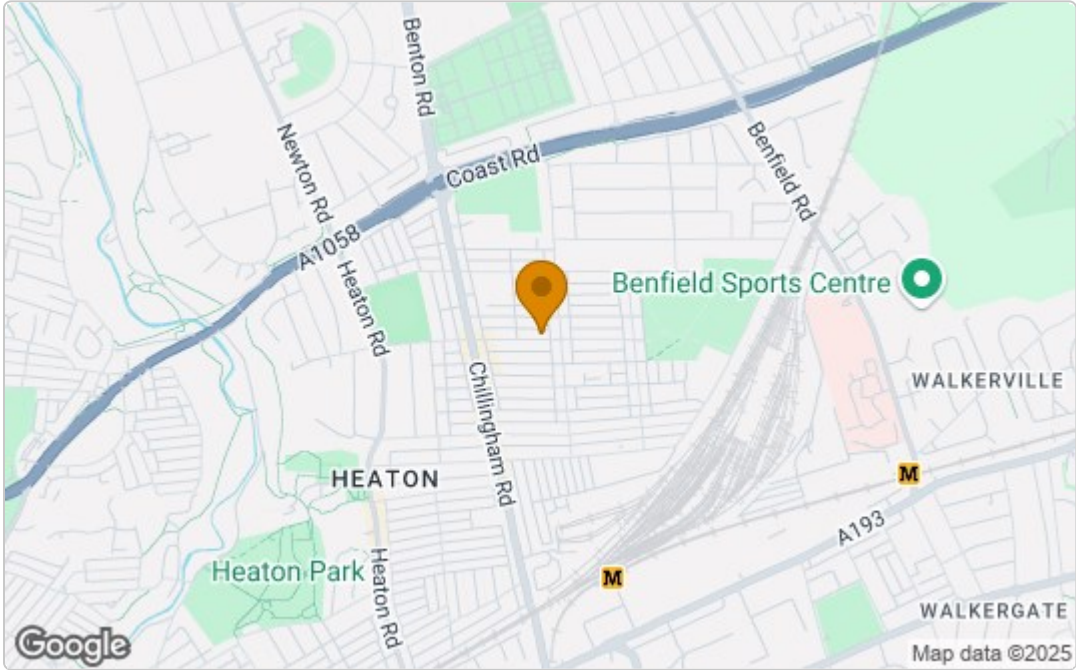


CARTINGTON TERRACE, NEWCASTLE UPON TYNE, NE6 5SH

TOTAL FLOOR AREA : 1156 sq.ft. (107.4 sq.m.) approx.

Whilst every attempt has been made to ensure the accuracy of the floorplan contained here, measurements of doors, windows, rooms and any other items are approximate and no responsibility is taken for any error, omission or mis-statement. This plan is for illustrative purposes only and should be used as such by any prospective purchaser. The services, systems and appliances shown have not been tested and no guarantee as to their operability or efficiency can be given.
Made with Metropix ©2025

Area Map



These particulars, whilst believed to be accurate are set out as a general outline only for guidance and do not constitute any part of an offer or contract. Intending purchasers should not rely on them as statements of representation of fact, but must satisfy themselves by inspection or otherwise as to their accuracy. No person in this firms employment has the authority to make or give any representation or warranty in respect of the property.

Energy Efficiency Graph

