



**16 Vale Walk, Newcastle Upon Tyne, NE2 1PJ**

**Offers Over £110,000**

Hive Estates welcomes to the market this beautifully presented one-bedroom apartment, ideally positioned on the second floor of a well-maintained development in the sought-after area of Sandyford.

Bathed in natural light from multiple windows, this spacious and airy flat features a well designed open plan living and dining area, perfect for modern living. The space benefits from a neutral colour scheme and soft grey carpeting, creating a calm and welcoming atmosphere with ample room for relaxing and entertaining.

The contemporary kitchen is stylish and functional, complete with oak effect cabinetry, black laminate worktops, an integrated oven and hob, washing machine, dishwasher and fridge and laminate flooring ideal for everyday cooking and hosting.

The generously sized double bedroom continues the home's bright and neutral theme, with a large window that fills the space with natural light and plush grey carpeting for added comfort. The bathroom is modern and well appointed, featuring a walk-in shower, WC, and wash basin, finished with elegant light grey wall tiles and contrasting dark grey floor tiles.

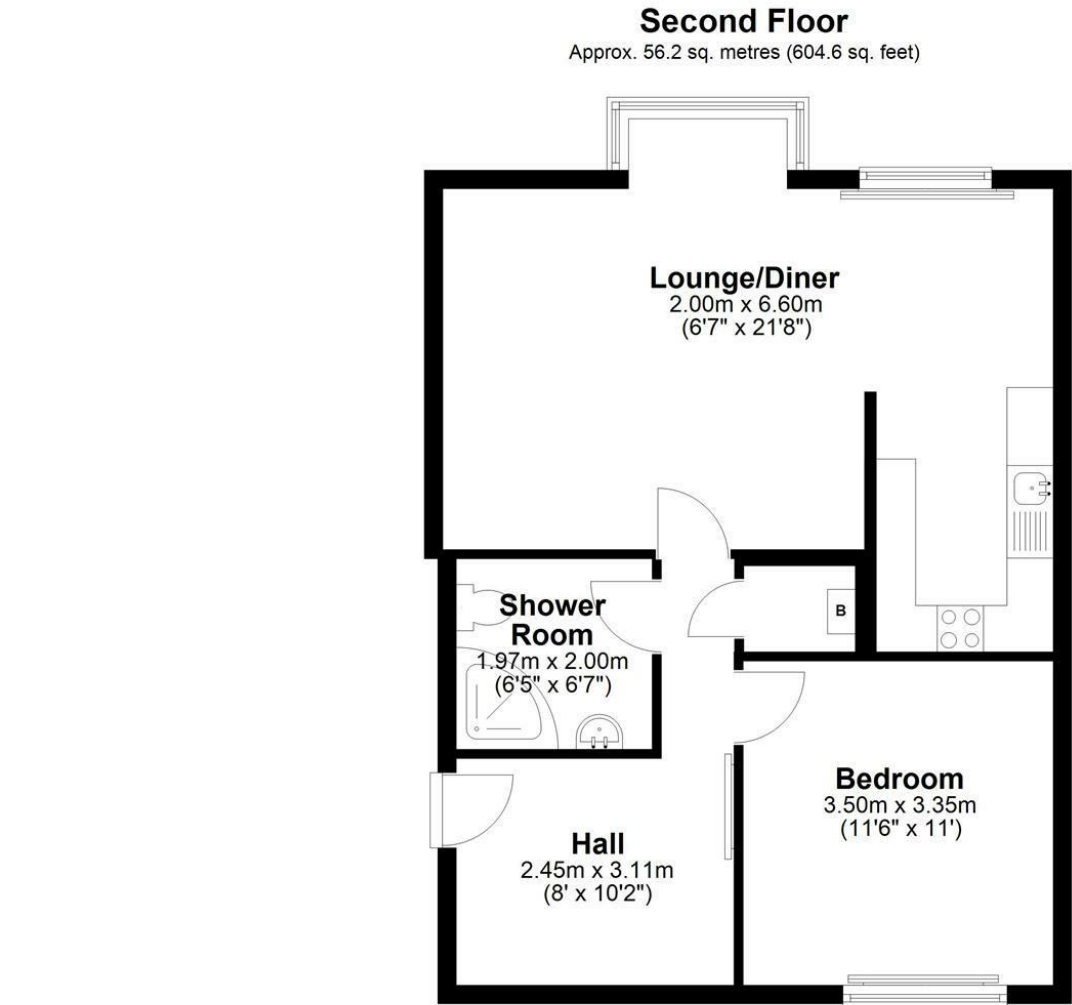
Nestled in a peaceful, green setting, the property offers a welcome retreat from the hustle and bustle while remaining conveniently close to excellent transport links, local shops, cafes, and restaurants.

Whether you're a first time buyer looking to step onto the property ladder or an investor seeking a solid rental opportunity, this bright and well located apartment offers exceptional value and potential. With its neutral décor and spacious layout, it's a true blank canvas ready to be transformed into your own stylish home or profitable investment.

**Lounge/Diner 6'6" x 21'7" (2.00 x 6.60)**

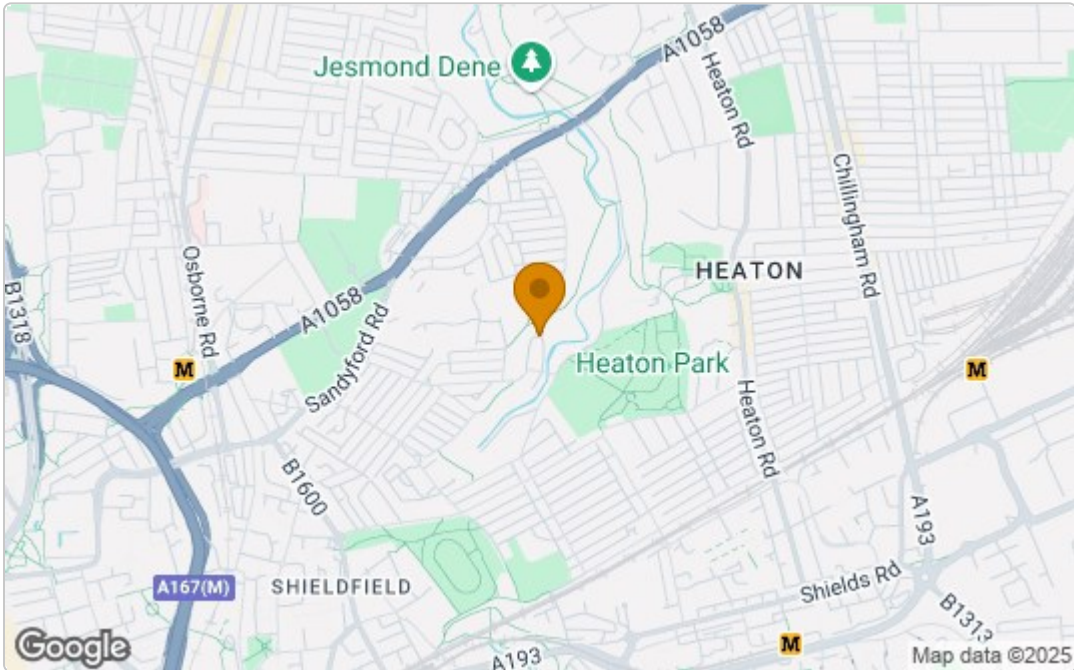
**Bedroom 11'5" x 10'11" (3.50 x 3.35)**

**Shower Room 6'5" x 6'6" (1.97 x 2.00)**

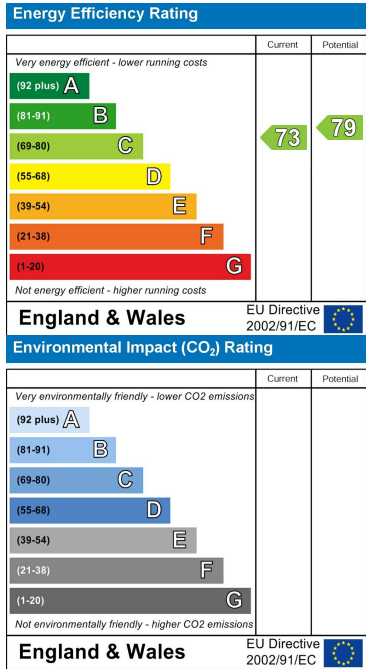


Total area: approx. 56.2 sq. metres (604.6 sq. feet)

Area Map



Energy Efficiency Graph



These particulars, whilst believed to be accurate are set out as a general outline only for guidance and do not constitute any part of an offer or contract. Intending purchasers should not rely on them as statements of representation of fact, but must satisfy themselves by inspection or otherwise as to their accuracy. No person in this firms employment has the authority to make or give any representation or warranty in respect of the property.