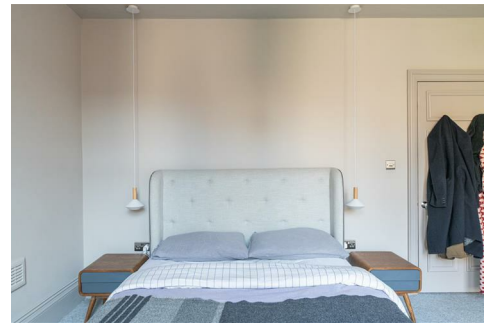




# HIVE ESTATES



## **Flat 4, 137 Osborne Road, Newcastle Upon Tyne, NE2 2TB**

**£1,650 Per Month**

Available July 2025 | £1,650 per month | Hive Estates presents to the market a stunning two bedroom apartment in the sought after location of Jesmond on Osborne Road. The property has been refurbished throughout to create a modern and stylish space, whilst retaining its original period features. There is a bright open plan kitchen/lounge area, the kitchen is fully fitted with built in fridge/freezer, electric oven and hob plus washing machine. There are two double bedrooms with fitted wardrobes and a modern tiled bathroom with double walk in shower. Externally there is permitted parking on street.

The property is ideally located close to the local shops, cafes and restaurants that Jesmond has to offer.

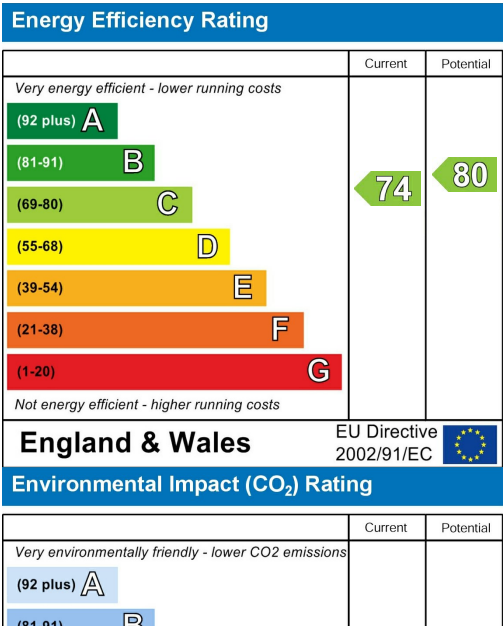




Area Map



Energy Efficiency Graph



These particulars, whilst believed to be accurate are set out as a general outline only for guidance and do not constitute any part of an offer or contract. Intending purchasers should not rely on them as statements of representation of fact, but must satisfy themselves by inspection or otherwise as to their accuracy. No person in this firms employment has the authority to make or give any representation or warranty in respect of the property.