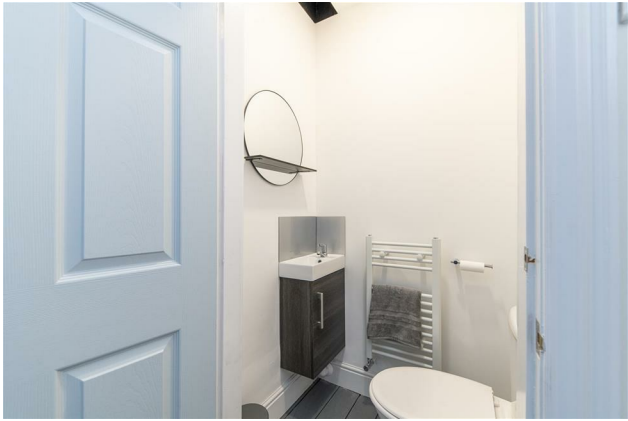




Flat 2, 93a Grey Street, Newcastle Upon Tyne, NE1 6EG

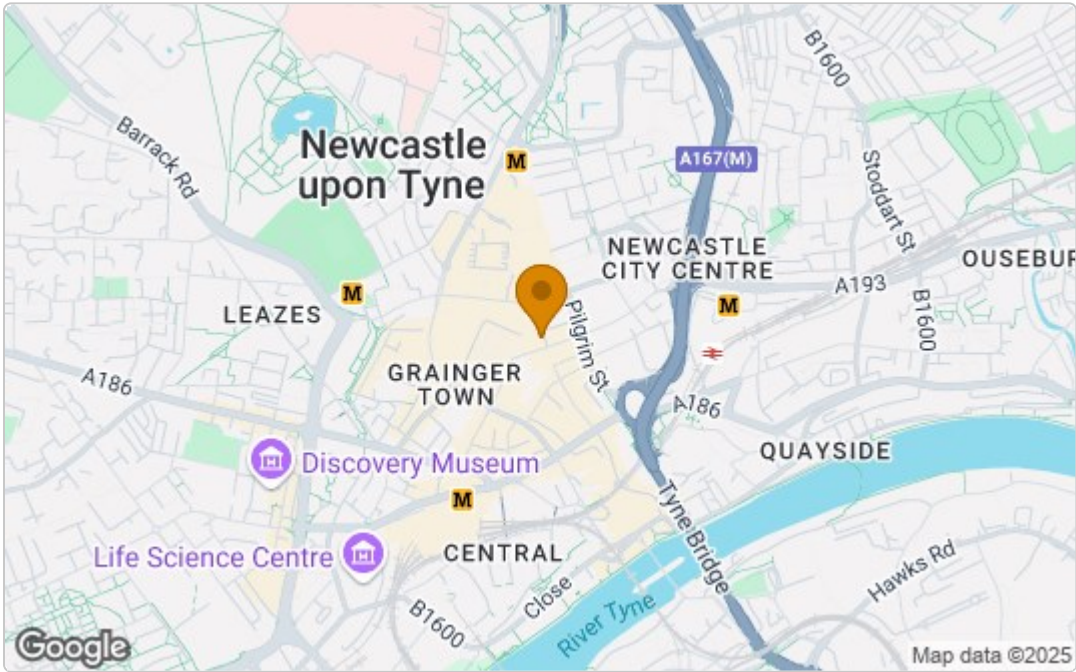
£2,000 Per Month

Available May 2025 | £2,000 per month inclusive of all bills | Hive Estates presents to the market a fantastic large two bedroom apartment based on the sought after area and street of Grey Street. The property is ideally situated in the heart and soul of the city centre. City centre at its best with all the shops, cafes, restaurants and night life that Newcastle has to offer. Internally the property is accessed via a secure communal entrance. The apartment is on an upper level which can be reached via a lift or stairway. The property is a great size and had two double bedrooms, two bathrooms and separate WC. The kitchen is fully fitted and the lounge is a fantastic size for entertaining in. To book a viewing and fully appreciate what this apartment offers please call our office on 01912618500.

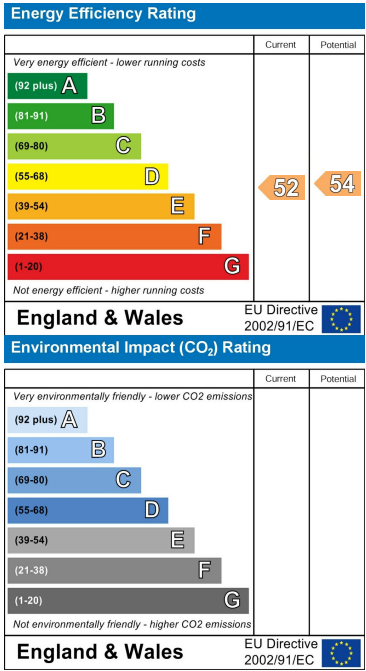


Floor Plan

Area Map



Energy Efficiency Graph



These particulars, whilst believed to be accurate are set out as a general outline only for guidance and do not constitute any part of an offer or contract. Intending purchasers should not rely on them as statements of representation of fact, but must satisfy themselves by inspection or otherwise as to their accuracy. No person in this firms employment has the authority to make or give any representation or warranty in respect of the property.