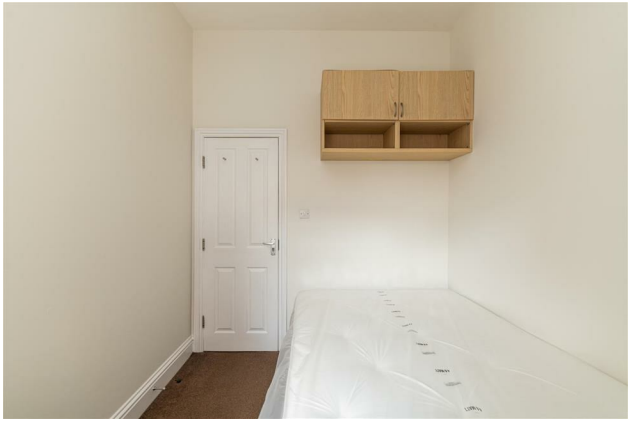




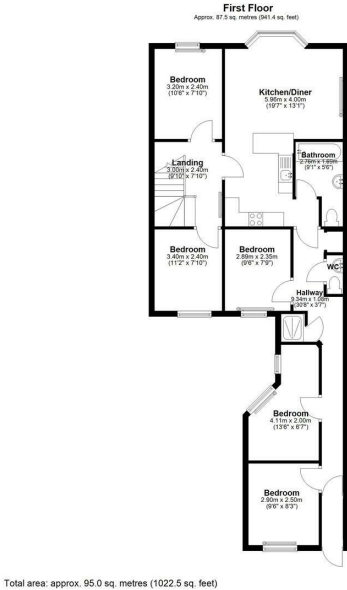
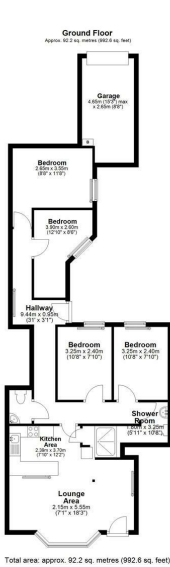
90/92 Shortridge Terrace, Newcastle upon Tyne, NE2 2JH

Offers Over £700,000

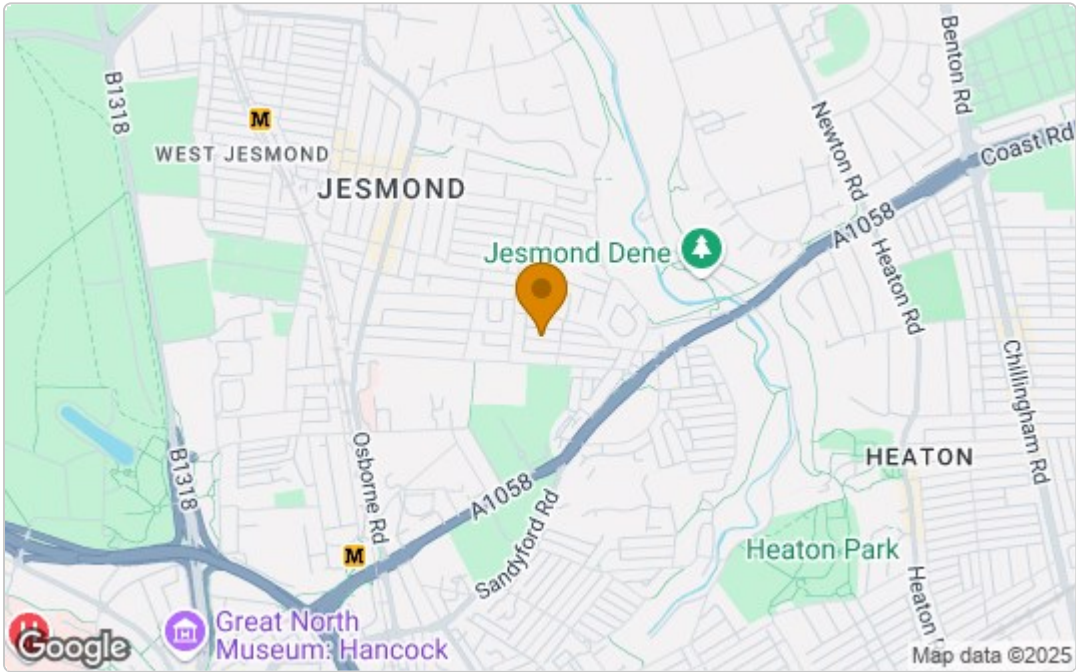
Hive Estates presents a rare opportunity to acquire a pair of Tyneside flats in the heart of Jesmond, offering a combined 9 bedrooms. Comprising a 5-bedroom upper flat and a 4-bedroom ground-floor flat, these fully licensed HMO properties are tenanted until summer 2026 and generate a total £56,800 per annum (£31,200 from 90, £25,600 from 92), reflecting a combined gross yield of 8.17%.



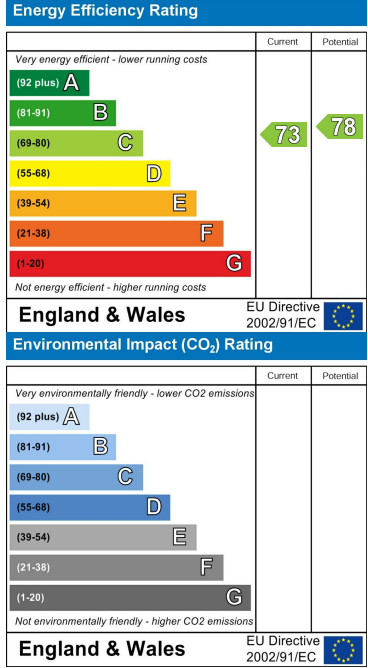
Floor Plan



Area Map



Energy Efficiency Graph



These particulars, whilst believed to be accurate are set out as a general outline only for guidance and do not constitute any part of an offer or contract. Intending purchasers should not rely on them as statements of representation of fact, but must satisfy themselves by inspection or otherwise as to their accuracy. No person in this firms employment has the authority to make or give any representation or warranty in respect of the property.