

90 Shortridge Terrace, Newcastle upon Tyne, NE2 2JH
Offers Over £375,000

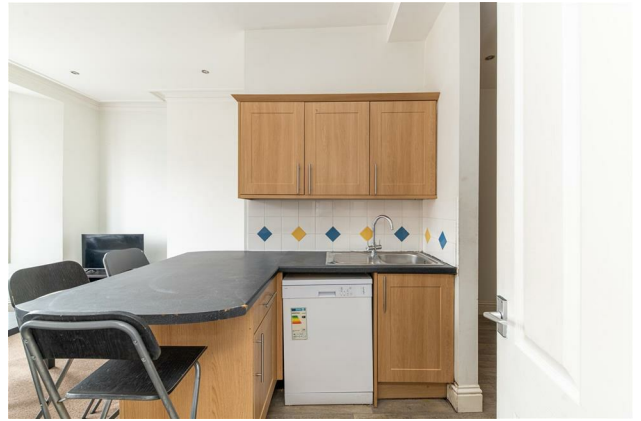
Hive Estates presents this spacious upper floor five-bedroom licensed HMO, located in the highly sought-after area of Jesmond. Tenanted until July 2026, generating £31,200 per annum, representing a gross rental yield of 8.3%. The property offers an immediate strong income stream with significant potential for rental uplift to enhance returns.

Designed for modern shared living, the property boasts a well-thought-out layout, including two double bedrooms accessed off the main landing leading onto a large open-plan kitchen and living area. The lounge benefits from a south-facing bay window, furnished with sofas and a flat-screen TV, seamlessly connecting to a fully fitted kitchen with a breakfast bar island—perfect for socializing.

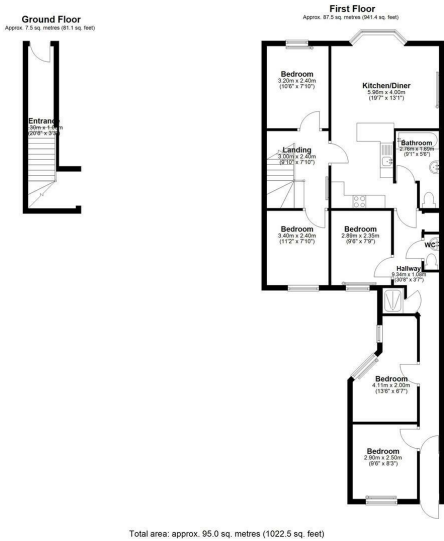
To the rear of the property, there are three double bedrooms, each fully furnished with a bed, desk, wardrobe, and individual wall-mounted TV.

A main bathroom with modern tiling and a shower over the bath is complemented by a separate shower room and an additional WC, ensuring convenience for all tenants. Additionally, the property has a loft space which may offer further potential, subject to the necessary consents.

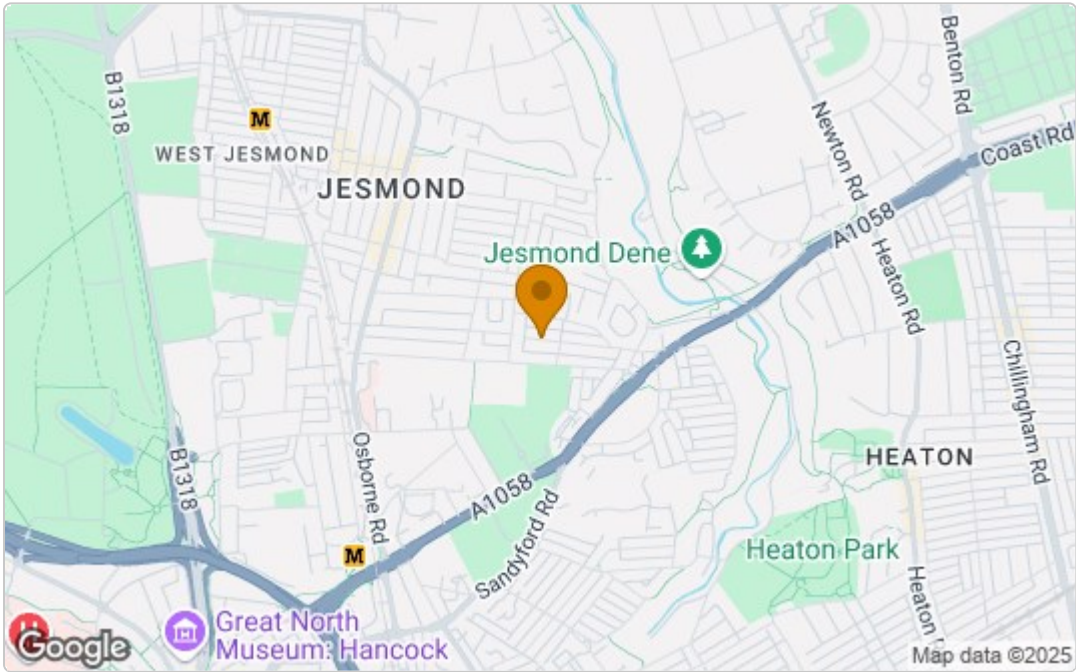
Externally, the property has a private rear yard and store with access to rear lane. This property is an excellent choice for investors seeking a high-performing asset with a 30+ year unbroken letting history, in one of Jesmond's most sought-after locations



Floor Plan



Area Map



These particulars, whilst believed to be accurate are set out as a general outline only for guidance and do not constitute any part of an offer or contract. Intending purchasers should not rely on them as statements of representation of fact, but must satisfy themselves by inspection or otherwise as to their accuracy. No person in this firms employment has the authority to make or give any representation or warranty in respect of the property.

Energy Efficiency Graph

