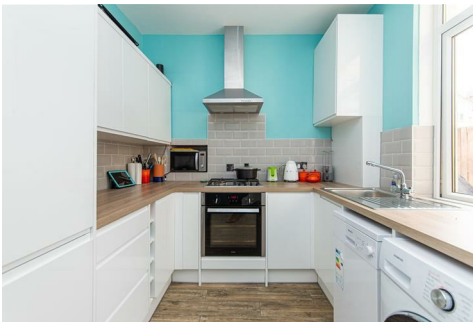




HIVE ESTATES



14 Ford Terrace, Wallsend, NE28 6QF

Offers Over £70,000

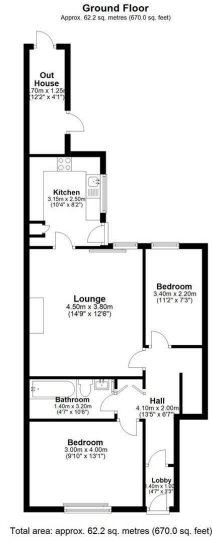
Hive Estates presents this modern and stylish two bedroom ground floor flat to the market in Wallsend, with a private paved rear yard and a recently fitted kitchen and bathroom.

Internally there's an entrance lobby with tiled slate floor. To the front is the master bedroom, with second bedroom to the rear. With under-stair storage and a modern bathroom, part tiled with a bath, modern basin, matching WC and stylish square shower with glass screen. There's a spacious living room, with feature chimney breast and space for a dining and relaxing. Through to the kitchen, fully fitted with handleless high gloss design with contrasting metro tiling, vibrant turquoise walls and a modern tiled floor. There's a back door leading to the private yard with enclosed fencing and access into a separate outhouse. The property is double glazed with gas central heating and has ample parking out the front, with an open aspect over shared fields and lawned space.

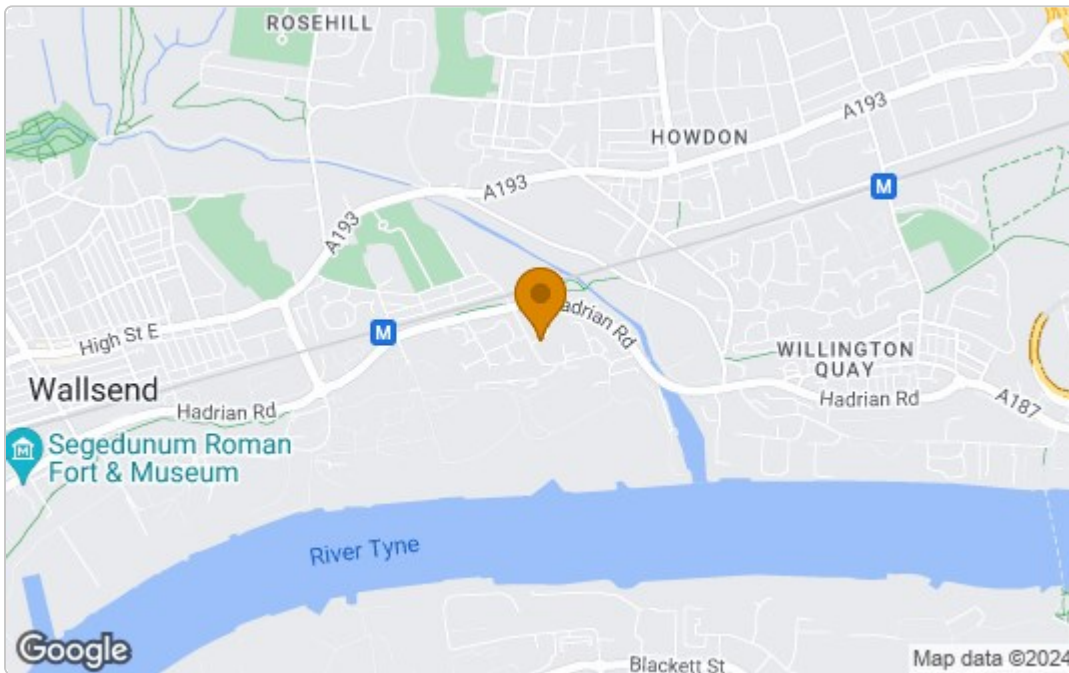
In a popular residential location in Wallsend, with transport links and amenities close by, this would make a great first time buy or investment with a rental yield of 8.57%.



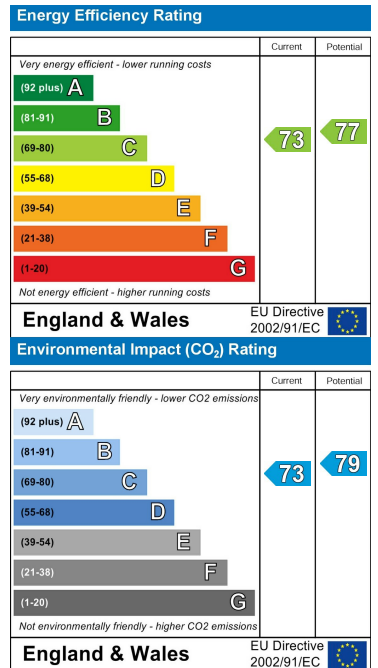
Floor Plan



Area Map



Energy Efficiency Graph



These particulars, whilst believed to be accurate are set out as a general outline only for guidance and do not constitute any part of an offer or contract. Intending purchasers should not rely on them as statements of representation of fact, but must satisfy themselves by inspection or otherwise as to their accuracy. No person in this firm's employment has the authority to make or give any representation or warranty in respect of the property.