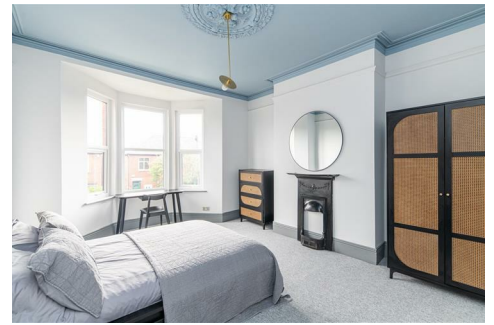




HIVE ESTATES

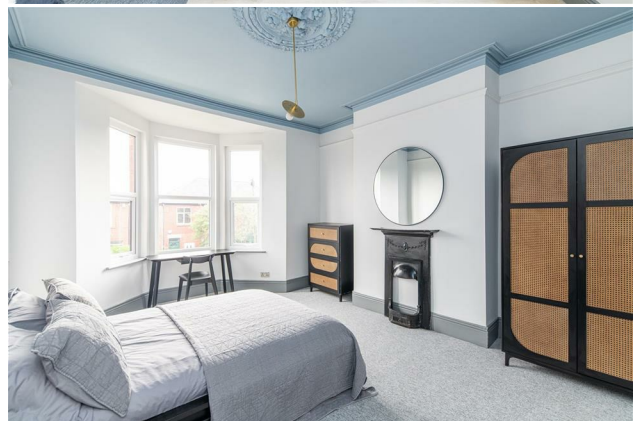
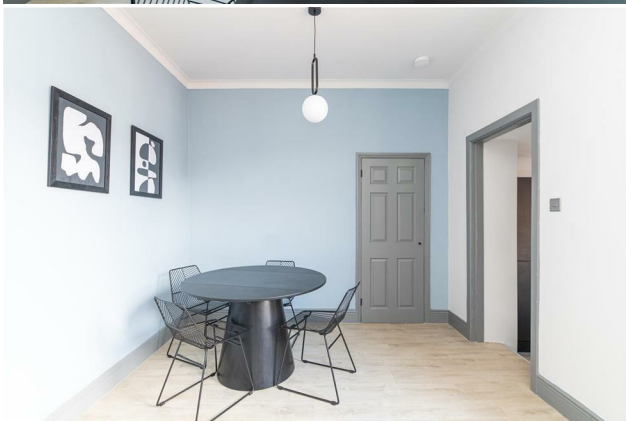
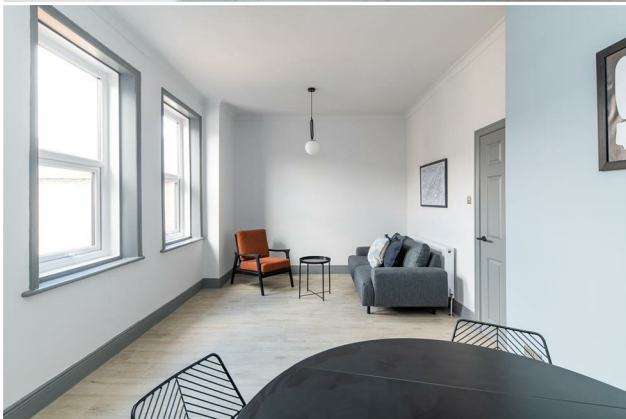


237 Rothbury Terrace, Newcastle Upon Tyne, NE6 5DD

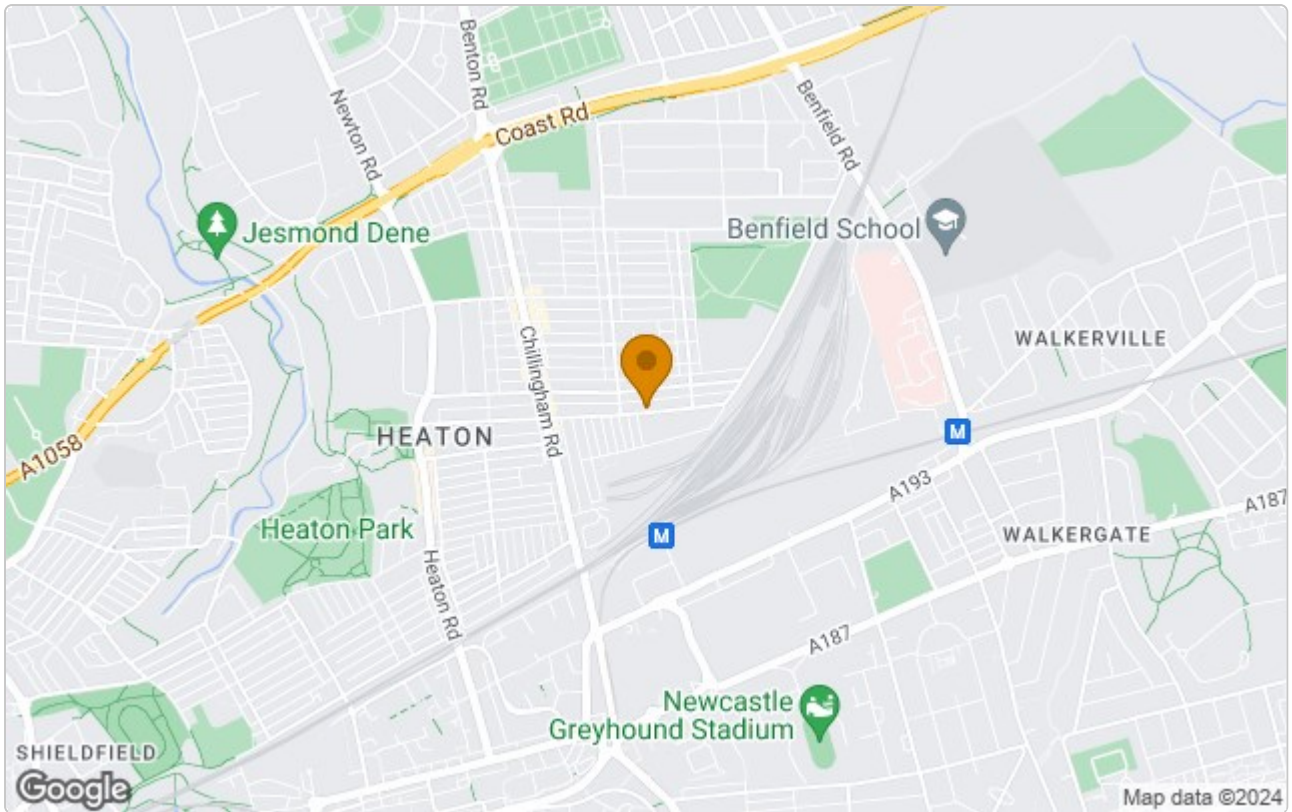
£1,250 Per Month

Available August 2024 | £1,250 per month | Hive Estates presents to the market a refurbished flat to rent in the sought after area of Heaton. The property has undergone a full refurbishment and offers comfortable and contemporary living.

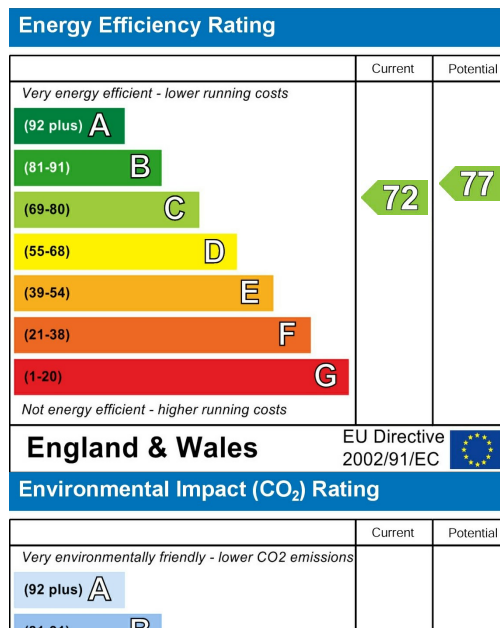
The property is situated on an upper floor, with two double bedrooms, both carpeted and have stylish decoration throughout. Each room comes with a double bed a wardrobe and chest of drawers. The master bedroom features a beautiful bay window. The kitchen is a fantastic size with ample cupboard space. There is a fitted electric oven and hob, built in washing machine and fridge/freezer. The kitchen also benefits from a breakfast bar area. The lounge is a great size offering dining space included. The bathroom has a double shower, with black fittings creating a modern space. There is a WC and wash hand basin with fitted mirror above. Externally there is a yard and free on street parking.



Area Map



Energy Efficiency Graph



These particulars, whilst believed to be accurate are set out as a general outline only for guidance and do not constitute any part of an offer or contract. Intending purchasers should not rely on them as statements of representation of fact, but must satisfy themselves by inspection or otherwise as to their accuracy. No person in this firm's employment has the authority to make or give any representation or warranty in respect of the property.