

6 Whitfield Drive, Newcastle Upon Tyne, NE12 8LD

Offers Over £350,000

Hive Estates presents to the market this immaculate three-bedroom home in Benton. Fully renovated and extended to a high specification, this home has a great layout offering open plan living with two generous gardens, ideal for a family lifestyle and entertaining.

Once inside, the décor is minimal and natural oak herringbone flows throughout the downstairs space. The hallway provides access to the living, kitchen and dining space, and second living room. **WC 4'5" x 7'2" (1.35 x 2.20)**

The living room offers a large bay window and a fantastic media wall spanning the length of the home, with a feature fireplace and deep shelf alcoves and dual spaces for televisions. The continuation of flooring and stylish décor connect naturally through to the kitchen and dining space. Progressing through, the expansive kitchen is a chef's dream. Equipped with a large central island providing extra workspace, integrated appliances including two ovens, induction hob, extractor fan and wine fridge. With a breakfast bar, the layout is functional and trendy. Fitted with pebble shaker cabinetry, black matt handles and sleek white quartz worktops that flow up the kitchen splash back and down the kitchen island creating a waterfall effect. The dining space is full of natural light from the floor to ceiling sliding doors leading out to one of the private garden's. Offering total seclusion, the area is fully enclosed and lawned. Further through is the utility, adding a touch of convenience with the addition of a WC and an alternative door to the outside space. One of the standout features of this property is the second living room, with a spacious floor area and an impressive vaulted ceiling. With panoramic views from the wall of sliding doors, leading to the generous second garden. This garden has a decked area, making it ideal for hosting and entertaining.

To the first floor, there are three generous bedrooms and a family bathroom. There is also a loft conversion, accessible from one of the bedrooms, adding an extra layer of versatility to an already impressive home.

The family bathroom is fitted with walk-in shower, standing bath, sink, WC and towel radiator. Decorated in arrow Atlantic honed marble tiles in chevron pattern, finished with matt black detailing.

In a great location, this home has a lot to offer. Externally, with a bricked double driveway and its proximity to transport links, local shops and amenities, its versatility would suit a range of lifestyles.

Open Plan Kitchen and Breakfast Room 18'0" x 20'6"
(5.50 x 6.25)

Open Plan Diner 14'6" x 12'7" (4.43 x 3.85)

Lounge 16'4" x 12'3" (5.00 x 3.75)

Bedroom 1 12'4" x 12'3" (3.77 x 3.75)

Bedroom 2 11'5" x 12'3" (3.50 x 3.75)

Bedroom 3
2.00 x 2.40

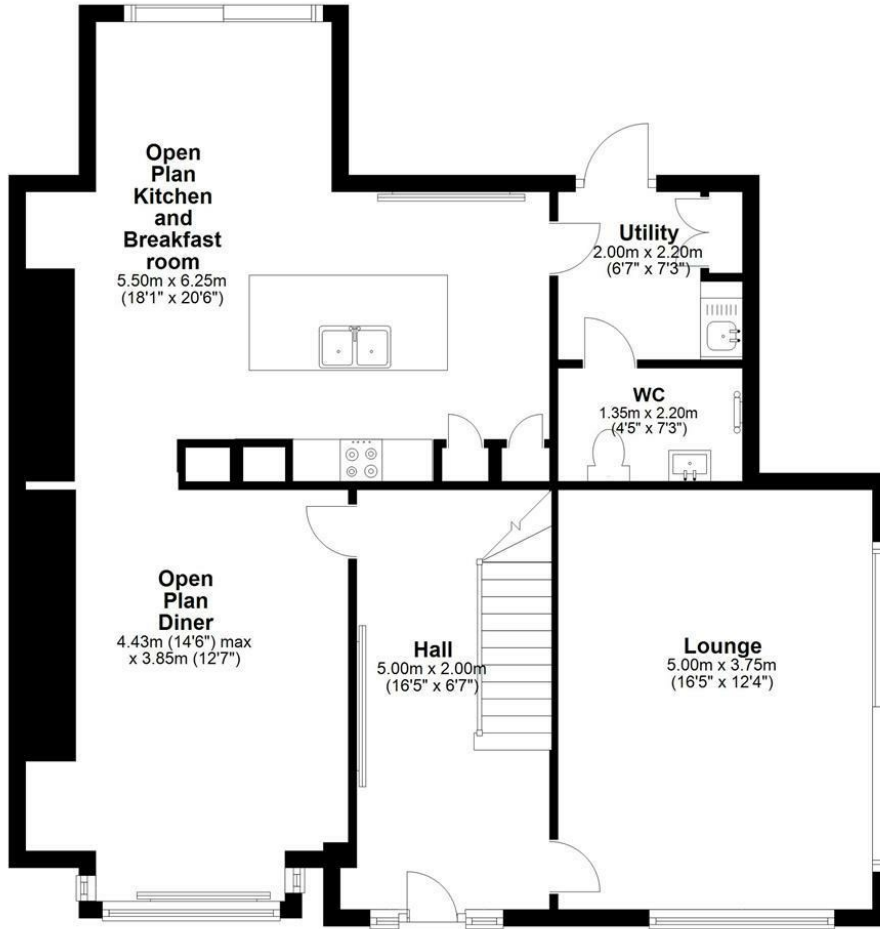
Bathroom 7'10" x 7'8" (2.40 x 2.35)

Utility 6'6" x 7'2" (2.00 x 2.20)

Hall 16'4" x 6'6" (5.00 x 2.00)

Ground Floor

Approx. 85.9 sq. metres (924.3 sq. feet)



Total area: approx. 132.6 sq. metres (1426.8 sq. feet)

Area Map



Energy Efficiency Graph

Energy Efficiency Rating		
	Current	Potential
Very energy efficient - lower running costs		
(92 plus) A		
(81-91) B		83
(69-80) C	69	
(55-68) D		
(39-54) E		
(21-38) F		
(1-20) G		
Not energy efficient - higher running costs		
EU Directive 2002/91/EC		
England & Wales		
Environmental Impact (CO ₂) Rating		
	Current	Potential
Very environmentally friendly - lower CO ₂ emissions		
(92 plus) A		
(81-91) B		
(69-80) C		
(55-68) D		
(39-54) E		
(21-38) F		
(1-20) G		
Not environmentally friendly - higher CO ₂ emissions		
EU Directive 2002/91/EC		
England & Wales		

These particulars, whilst believed to be accurate are set out as a general outline only for guidance and do not constitute any part of an offer or contract. Intending purchasers should not rely on them as statements of representation of fact, but must satisfy themselves by inspection or otherwise as to their accuracy. No person in this firm's employment has the authority to make or give any representation or warranty in respect of the property.