



# HIVE ESTATES



## 20 Hermitage Park, County Durham, DH3 3JZ

**Offers Over £280,000**

Hive Estates welcomes to the market this fully renovated detached home in Hermitage Park, an exclusive cul-de-sac estate in Chester Le Street, Durham. With three double bedrooms all on one level, this bungalow epitomises modern single level living.

The stunning newly fitted kitchen has two-toned shaker units, stylish ironmongery and integrated Bosch branded appliances (including range hob, extractor hood, double oven, fridge freezer and dishwasher), with a sleek revealing double pantry. The utility is fully glazed, doubling up perfectly as a sunroom and leads out to the large garden that sits in sun most of the day. The beautiful and spacious bathroom boasts an amazing walk-in double rainfall shower and a free standing bath with marble effect tiling and a heated towel radiator. The corner living room has a dual aspect and is a generous size with contemporary pendant light fitting.

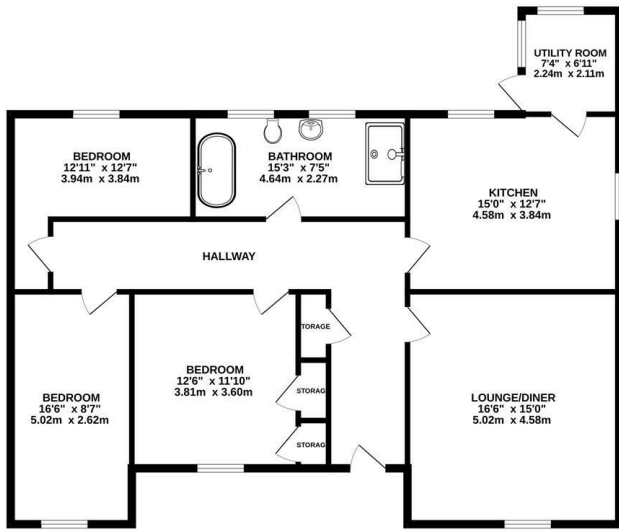
This redesigned refurbishment provides the opportunity for ample potential of multi-use for all rooms with no limitations. Perhaps a dining room, a home office or a playroom? The three double bedrooms rooms have fresh carpets and all of the rooms throughout have large accent windows that allows the property to flood with natural light that is carried throughout.

This superb home has been designed to a high specification and has been finished to an excellent standard, having undergone a full rewire, with a brand new combi boiler and had a new roof installed.



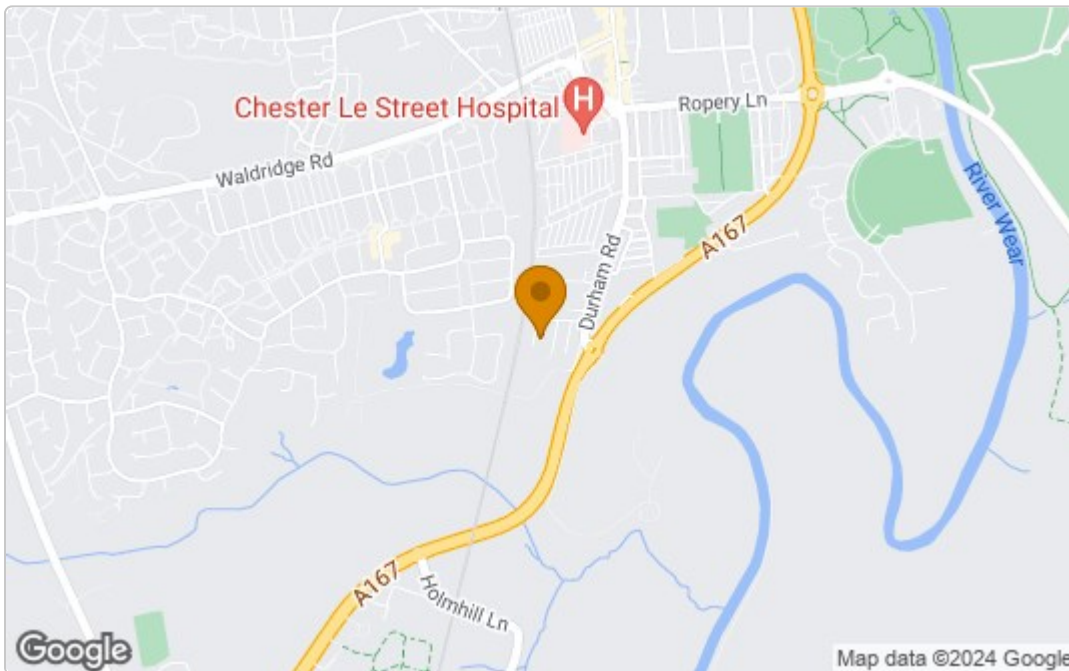
# Floor Plan

GROUND FLOOR  
1229 sq.ft. (114.1 sq.m.) approx.

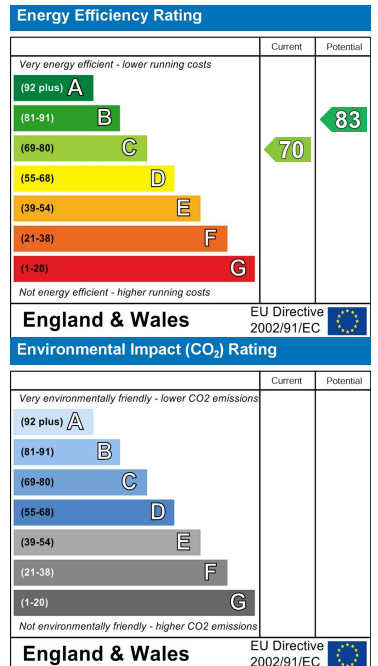


HELMITAGE PARK CH3 3JZ  
TOTAL FLOOR AREA: 1229 sq.ft. (114.1 sq.m.) approx.  
Whilst every attempt has been made to ensure the accuracy of the floorplan contained herein, measurements of walls, windows, doors and any other items are approximate and no responsibility is taken for any error, omission or misstatement. This plan is for illustrative purposes only and should be used as such for any prospective purchase. The fixtures, fittings and appliances shown have not been tested and no guarantee as to their operation or efficacy can be given.  
Made with Metropix 12/20

# Area Map



# Energy Efficiency Graph



These particulars, whilst believed to be accurate are set out as a general outline only for guidance and do not constitute any part of an offer or contract. Intending purchasers should not rely on them as statements of representation of fact, but must satisfy themselves by inspection or otherwise as to their accuracy. No person in this firm's employment has the authority to make or give any representation or warranty in respect of the property.