



# HIVE ESTATES



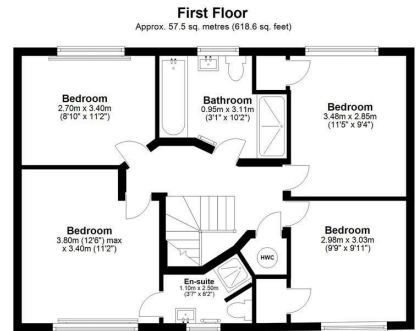
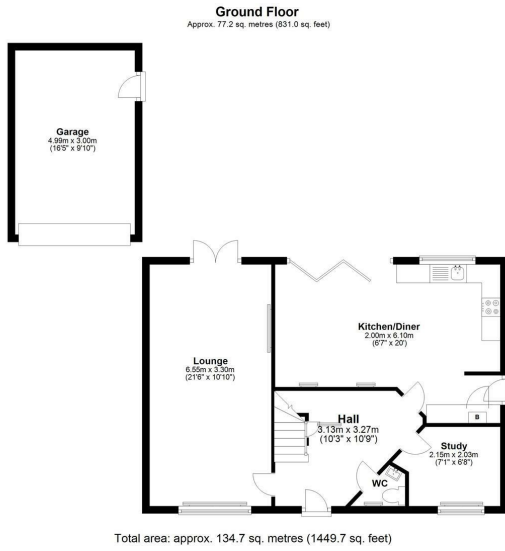
**85 Bayfield, West Allotment, NE27 0FE**

**Offers Over £340,000**

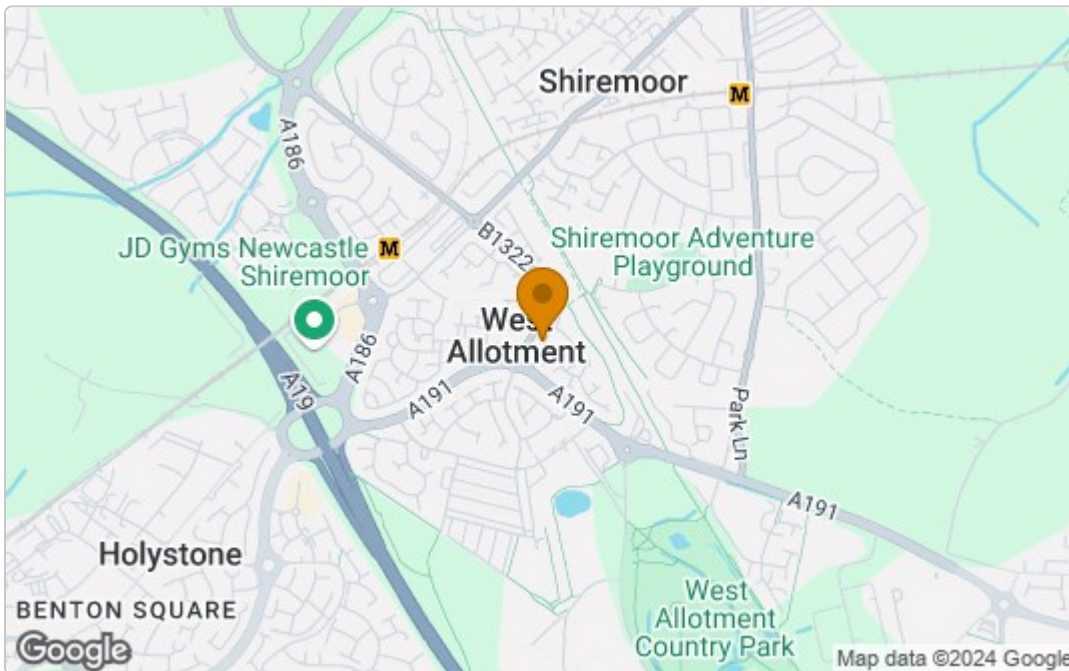
Hive Estates welcomes to the market this modern four bedroom detached house in West Allotment, Shiremoor. There's an open plan kitchen and dining space with b-folding doors into a private and beautifully presented garden, and a spacious living room with wooden flooring and French doors to outside.



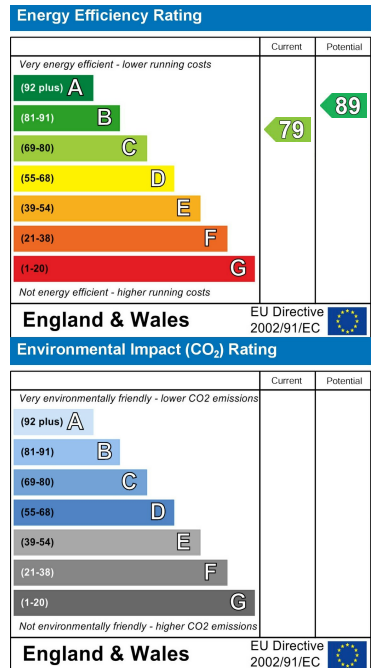
# Floor Plan



## Area Map



## Energy Efficiency Graph



These particulars, whilst believed to be accurate are set out as a general outline only for guidance and do not constitute any part of an offer or contract. Intending purchasers should not rely on them as statements of representation of fact, but must satisfy themselves by inspection or otherwise as to their accuracy. No person in this firm's employment has the authority to make or give any representation or warranty in respect of the property.