



47a Percy Gardens, NE30 4HH

Offers Over £500,000

Hive Estates presents the Tynemouth Watchtower, one of the most unique residential homes in the country. This seven-story Grade II listed Watchtower has an imposing position on Percy Gardens with uninterrupted views stretching out over the North Sea. A former World War command tower with panoramic views over Tynemouth Castle, the Priory, and up to the Cheviots – and even Scotland on a clear day – the spectacular vista from each high level of this tower is unlike any other property on the North East coast.

Made of reinforced steel and concrete, this robustly built, and beautifully engineered historic building stands tall at the edge of Longsands beach. The unique shape of this property is instantly recognisable, with a curved front and straight back, blending art-deco inspired design with brutalist architecture.

The seventh storey would have been the roof, where there was a gun installed. It was converted into an observatory room and features a large terrace. The sixth storey below would have been the original look out, and is now the living room, with incredible views from the panoramic windows.

On each level there's five additional rooms, each semi-circular in shape thanks to the curve of the building. There's three bedrooms, each with tall ceilings and windows and an abundance of natural light. The fifth storey bedroom has views over the rooftops looking out to sea. The bathroom is mid-century in style, with solid wood panelling, a large corner bath with tiled steps and opposite a shower with glass screen. The fitted kitchen on the ground floor has solid wood cabinetry, a tiled splashback, with integrated appliances including an oven. There's ample space for a dining table and chairs in the semi-circular space, and a door leading out to the spacious private yard. Due to its south-facing aspect, the yard is a sheltered heat trap and has previously been used as a garden. There's also double doors allowing space for car parking. On the ground floor there's a WC with boiler cupboard, with gas central heating in the rooms and a hallway with windows allowing natural light to cascade down the stairwell.

During World War One, the North East was one of the most heavily defended parts of the country; ships patrolled the area to protect the coal industry, and both the Tyne and Wear rivers. In 1914 at the start of the War the North East coast was bombarded by the German Navy. As the war progressed, The War Office needed the patrolling ships to defend other parts of the country, so it took the decision in 1916 to start construction on two guns called the Tyne Turrets to protect the coastline. Two guns were taken from a battle cruiser to be installed at Marsden in South Shields and Hartley, Seaton Deleval. Standing 7 stories high on Percy Gardens, The Tynemouth Watchtower was built to be the command tower for these guns.

The tower was used again during World War 2 as a look out, and in 1967 the Ministry of Defence sold it, and it has been a private residence ever since. Thought to be the second oldest reinforced steel building in the country, it has been engineered to be future proofed. Owned by the current home owner since 2000, it is now available on the market for the first time in over 20 years. Situated on the edge of the award-winning Longsands Beach, widely regarded as one of the most beautiful beaches in Tynemouth, with stunning golden sands that stretch for a mile, as well as rocks, dunes and cliffs. Popular with dog walkers, tourists, families, dippers and surfers, all year round. This property could be an ideal seaside home, investment or coastal retreat for owner occupiers, investors or families wanting an iconic property on a sought after coastline.

Kitchen/Breakfast Room 9'10" x 15'8" (3.00 x 4.79)

Bedroom 1 9'10" x 15'8" (3.00 x 4.79)

Bedroom 2 9'10" x 15'8" (3.00 x 4.79)

Bathroom 9'10" x 15'8" (3.00 x 4.79)

Bedroom 3 9'10" x 15'8" (3.00 x 4.79)

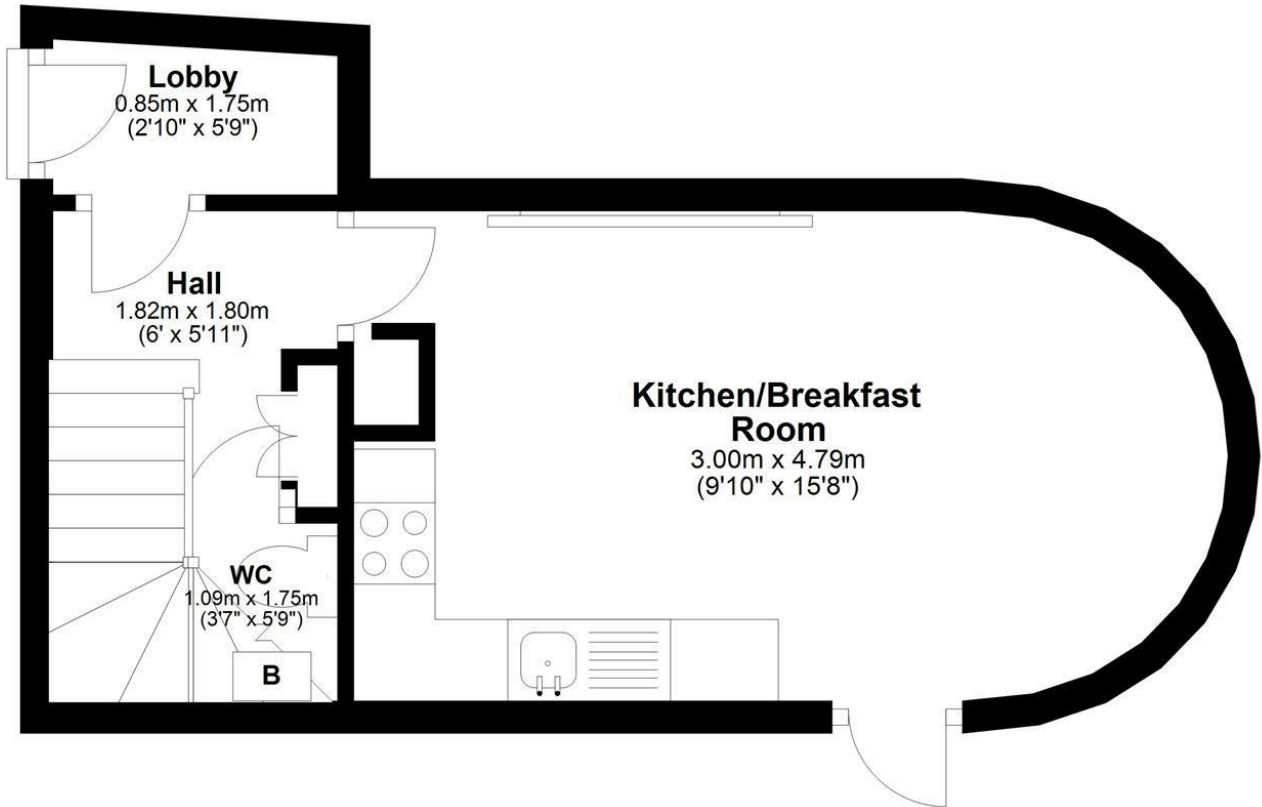
Lounge 9'10" x 15'8" (3.00 x 4.79)

Terrace 8'5" x 11'8" (2.57 x 3.58)

Observatory 9'10" x 9'2" (3.00 x 2.80)

Floor 1

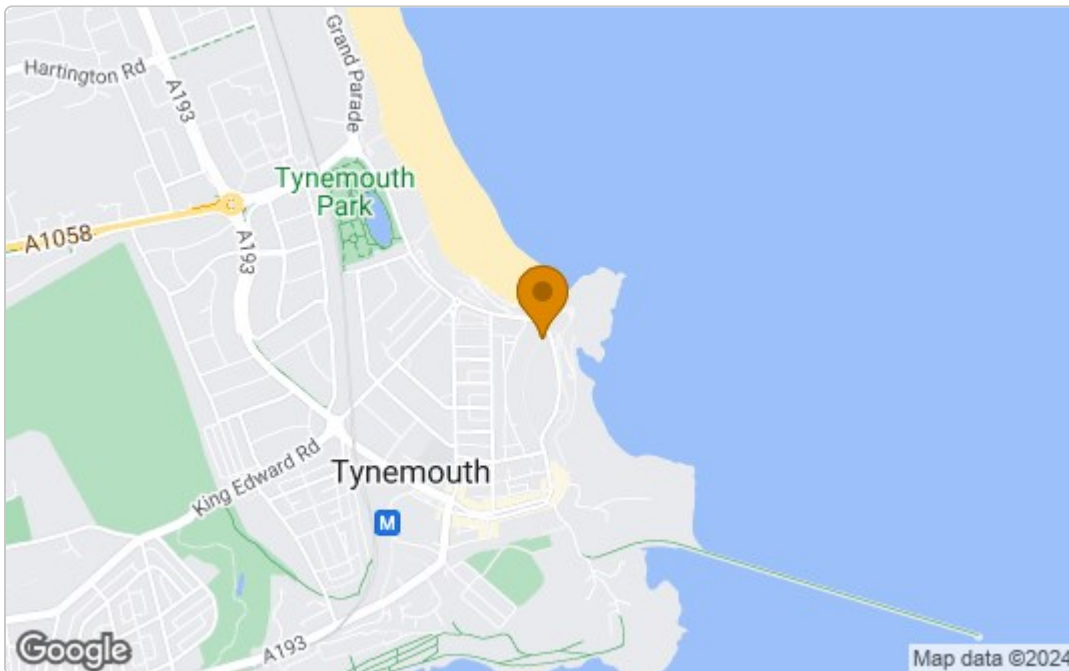
Approx. 25.2 sq. metres (271.1 sq. feet)



Total area: approx. 142.8 sq. metres (1537.4 sq. feet)

[Area Map](#)

[Energy Efficiency Graph](#)



These particulars, whilst believed to be accurate are set out as a general outline only for guidance and do not constitute any part of an offer or contract. Intending purchasers should not rely on them as statements of representation of fact, but must satisfy themselves by inspection or otherwise as to their accuracy. No person in this firm's employment has the authority to make or give any representation or warranty in respect of the property.