



HIVE ESTATES



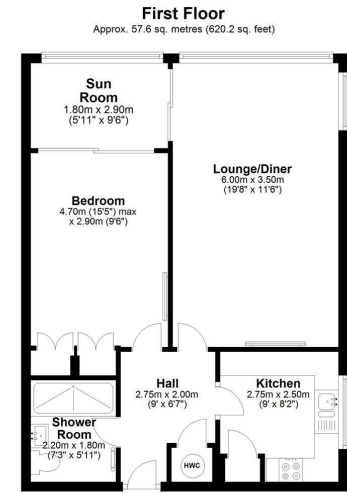
21 Blythwood, Newcastle Upon Tyne, NE2 2BG

Offers Over £180,000

Hive Estates welcomes to the market this charming raised ground floor apartment, perfectly situated in Jesmond. With a large double bedroom, modern family bathroom and unique sun room overlooking private gardens, the configuration has been thoughtfully designed to create a spacious and light feel throughout.

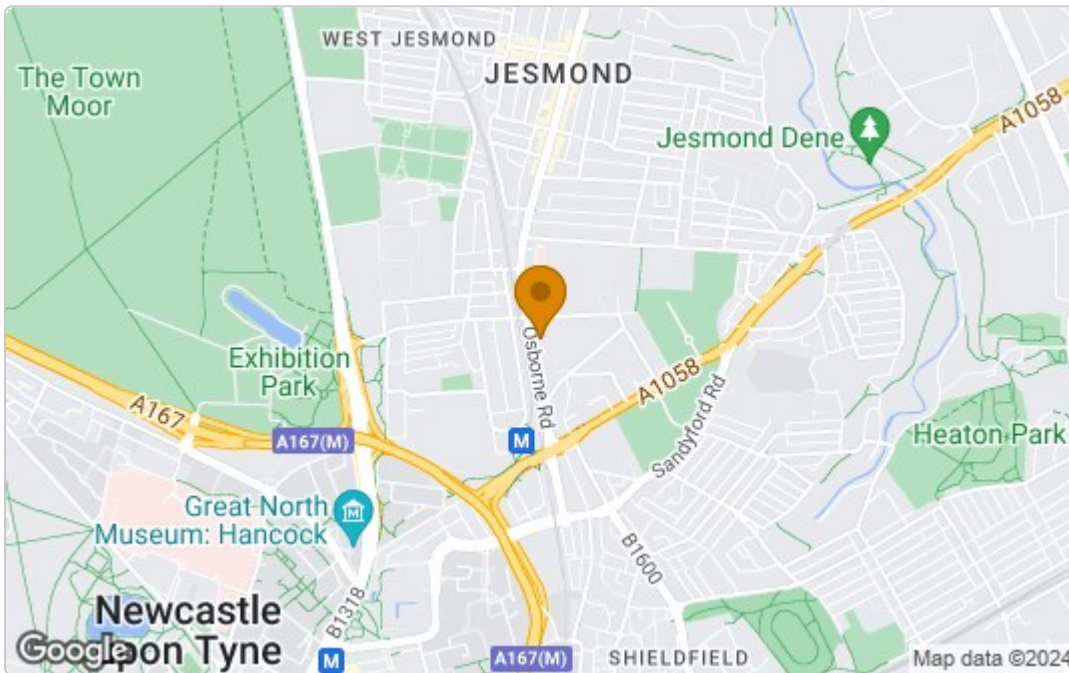


Floor Plan

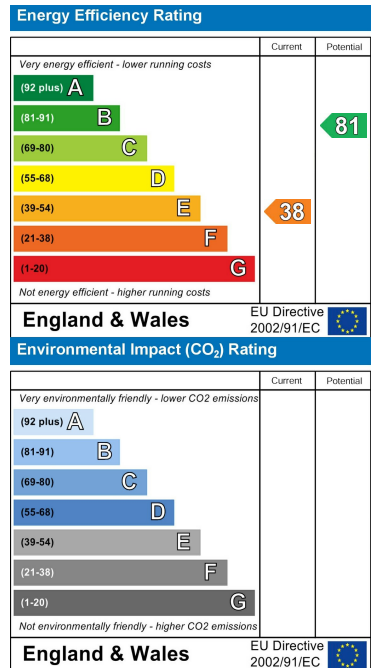


Total area: approx. 57.6 sq. metres (620.2 sq. feet)

Area Map



Energy Efficiency Graph



These particulars, whilst believed to be accurate are set out as a general outline only for guidance and do not constitute any part of an offer or contract. Intending purchasers should not rely on them as statements of representation of fact, but must satisfy themselves by inspection or otherwise as to their accuracy. No person in this firm's employment has the authority to make or give any representation or warranty in respect of the property.