



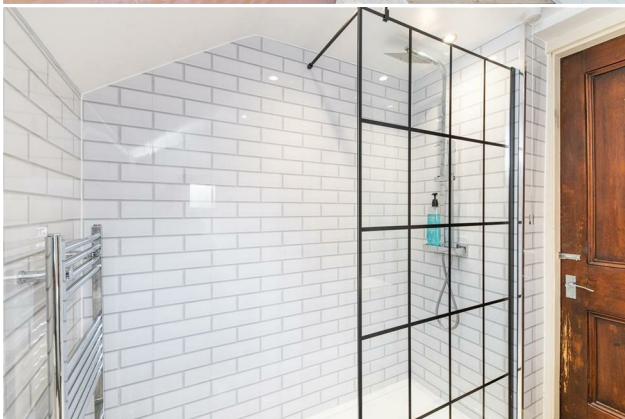
# HIVE ESTATES



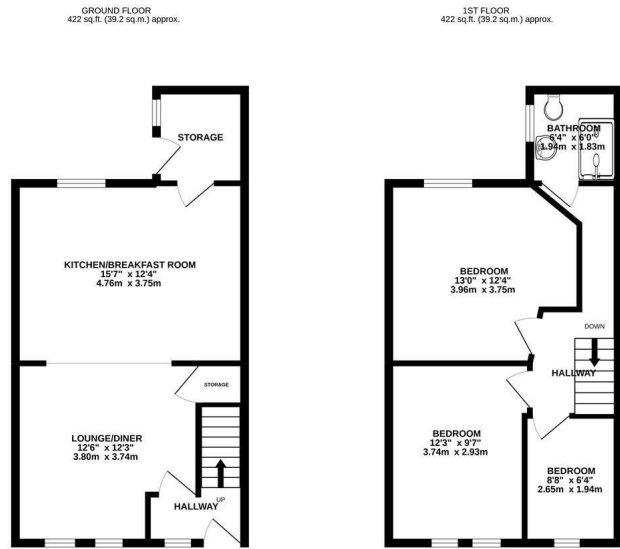
**6 Poplar Place, Newcastle Upon Tyne, NE3 1DR**

**Offers Over £330,000**

Hive Estates welcomes this stylish and well presented three-bedroom terraced house in Gosforth to the market. A traditional mid-terrace Victorian house on a quaint pedestrianised street, it has been reconfigured to create a modern, open-plan home with a trendy fixtures and fittings and an abundance of natural light throughout.



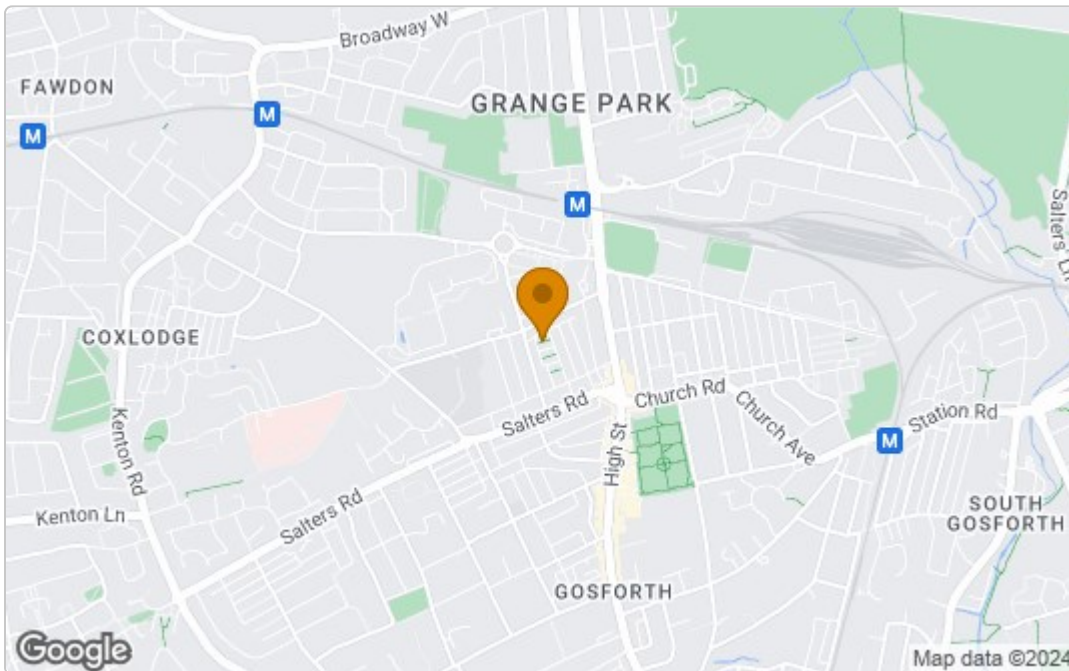
# Floor Plan



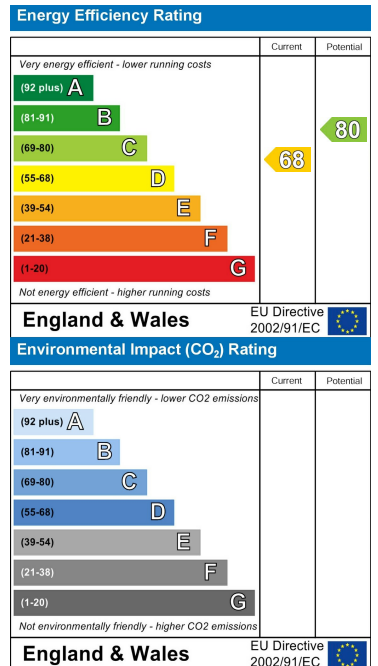
POPULAR PLACE NE3 1DR  
TOTAL FLOOR AREA: 844 sq.ft. (78.4 sq.m.) approx.  
Whilst every attempt has been made to ensure the accuracy of the figures contained herein, measurements of items, windows, doors and any other items are approximate and no responsibility is taken for any error, omission or misstatement. This does not constitute an offer or a contract. The figures are for guidance only and should be used as such for any prospective purchaser. The figures are not to be relied upon for any other purpose and no guarantee is given as to their accuracy or efficiency can be given. Map data ©2024



# Area Map



# Energy Efficiency Graph



These particulars, whilst believed to be accurate are set out as a general outline only for guidance and do not constitute any part of an offer or contract. Intending purchasers should not rely on them as statements of representation of fact, but must satisfy themselves by inspection or otherwise as to their accuracy. No person in this firm's employment has the authority to make or give any representation or warranty in respect of the property.