



# HIVE ESTATES



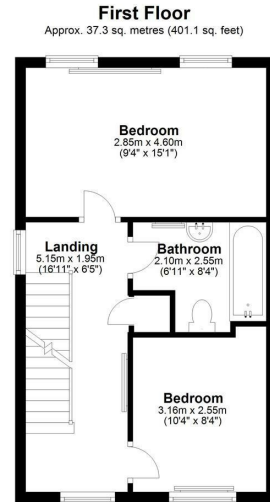
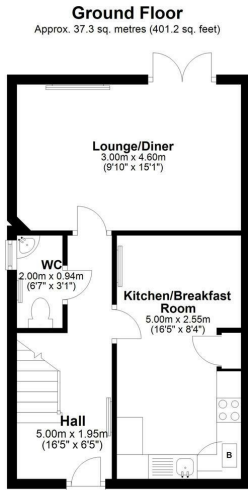
**17 Ashfield Mews, Wallsend, NE28 7RG**

**Offers Over £175,000**

Hive Estates welcomes to the market this end terraced three bedroom home. Situated over three floors, the property offers private garden to the rear, spacious rooms and a modern finish throughout.

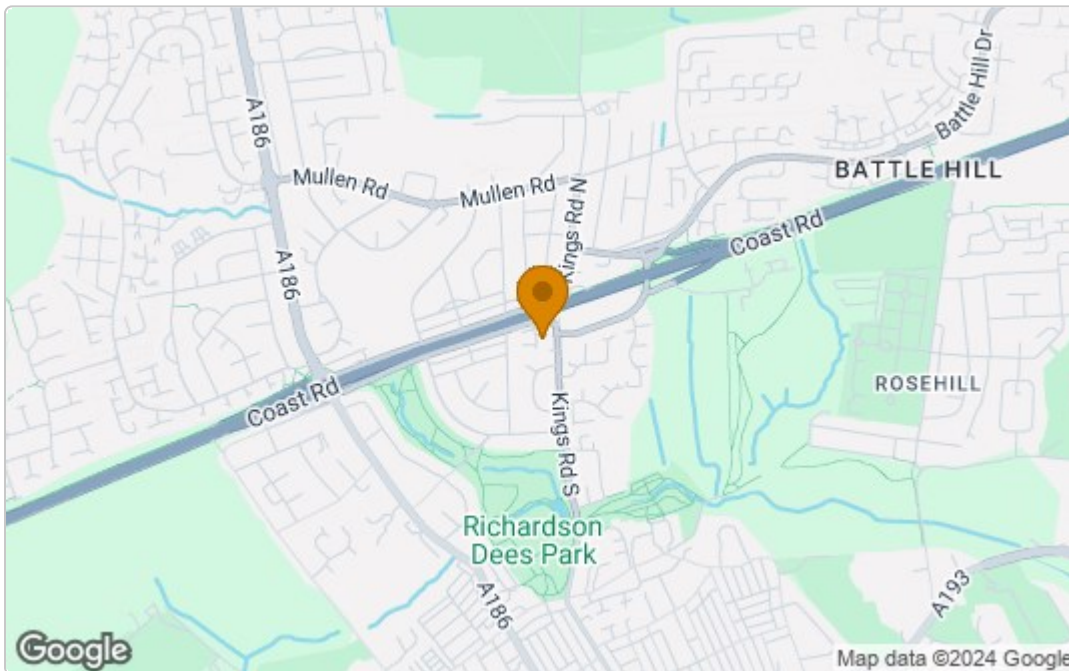


# Floor Plan

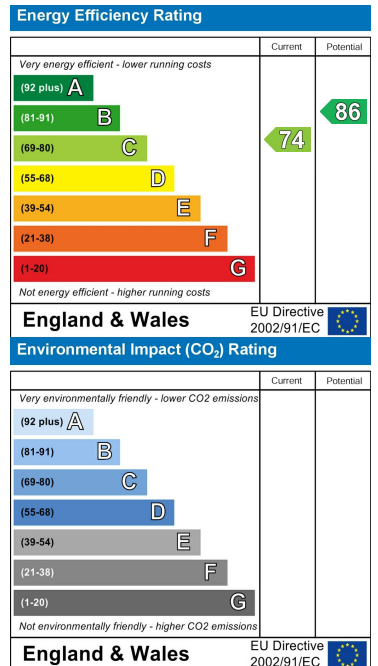


Total area: approx. 101.7 sq. metres (1094.9 sq. feet)

## Area Map



## Energy Efficiency Graph



These particulars, whilst believed to be accurate are set out as a general outline only for guidance and do not constitute any part of an offer or contract. Intending purchasers should not rely on them as statements of representation of fact, but must satisfy themselves by inspection or otherwise as to their accuracy. No person in this firm's employment has the authority to make or give any representation or warranty in respect of the property.