



# HIVE ESTATES



**156 New Ridley Road, Stocksfield, NE43 7EH**

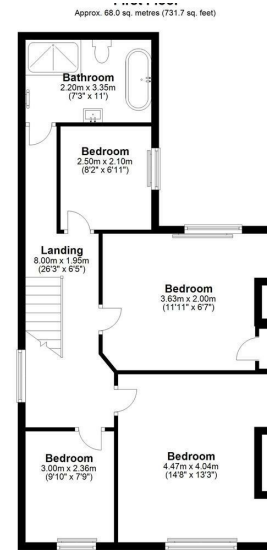
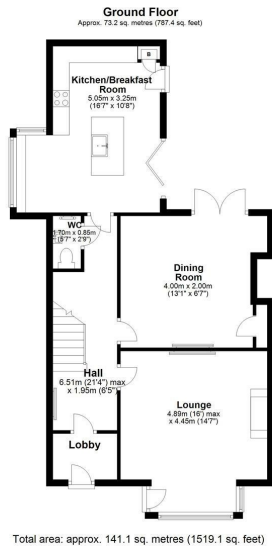
**Offers Over £425,000**

Hive Estates welcomes to the market this stunning fully renovated semi-detached home on New Ridley Road, Stocksfield.

With a beautifully large garden, and with easy access to Newcastle and open Northumberland countryside, it is ideal for both City and Country living. Newly modernised and redesigned throughout, the renovation breathes new life into the space, whilst restoring the period features. With four double bedrooms, two bright and open reception spaces, two brand new bathrooms and an expansive uninterrupted garden to the rear with panoramic views of the Tyne Valley, this home is perfect for family living.



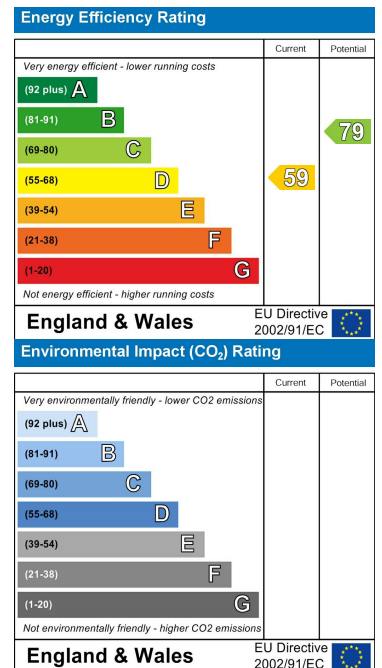
# Floor Plan



# Area Map



# Energy Efficiency Graph



These particulars, whilst believed to be accurate are set out as a general outline only for guidance and do not constitute any part of an offer or contract. Intending purchasers should not rely on them as statements of representation of fact, but must satisfy themselves by inspection or otherwise as to their accuracy. No person in this firm's employment has the authority to make or give any representation or warranty in respect of the property.