



HIVE ESTATES



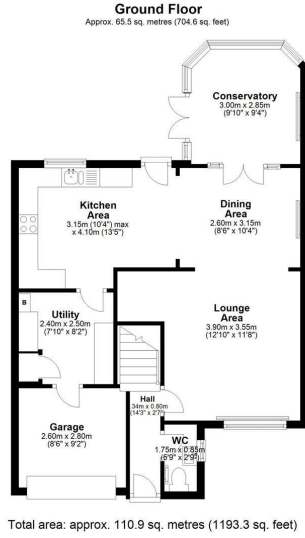
38 Seaton Place, Wideopen, NE13 7HQ

Offers Over £260,000

Hive Estates welcomes to the market this charming three bedroom detached home, located in Wideopen. With a large south facing garden and sought after cul-de-sac position, the home's spacious rooms and open plan living arrangement, are among many of it's appealing attributes.



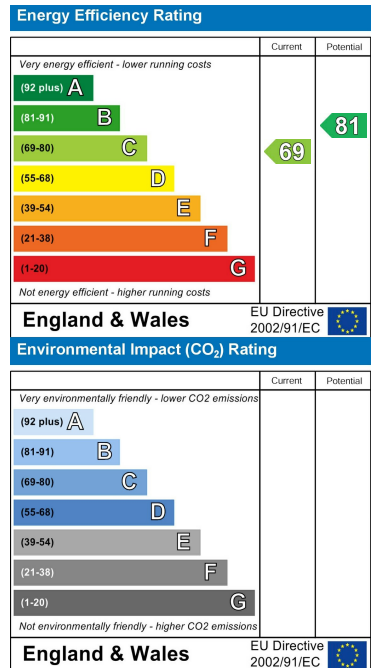
Floor Plan



Area Map



Energy Efficiency Graph



These particulars, whilst believed to be accurate are set out as a general outline only for guidance and do not constitute any part of an offer or contract. Intending purchasers should not rely on them as statements of representation of fact, but must satisfy themselves by inspection or otherwise as to their accuracy. No person in this firm's employment has the authority to make or give any representation or warranty in respect of the property.