



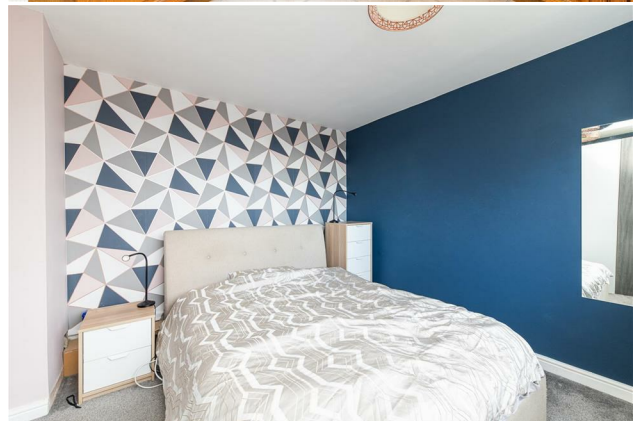
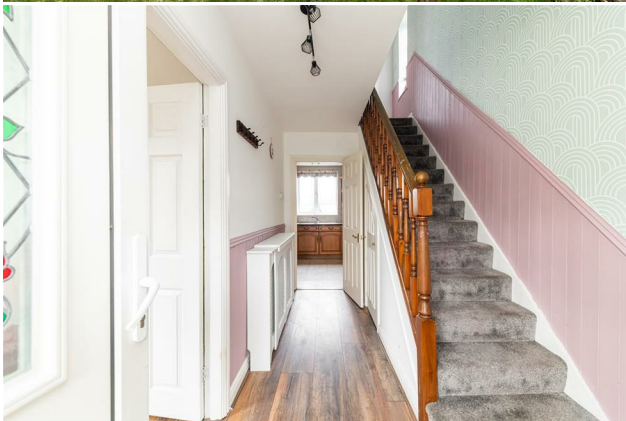
HIVE ESTATES



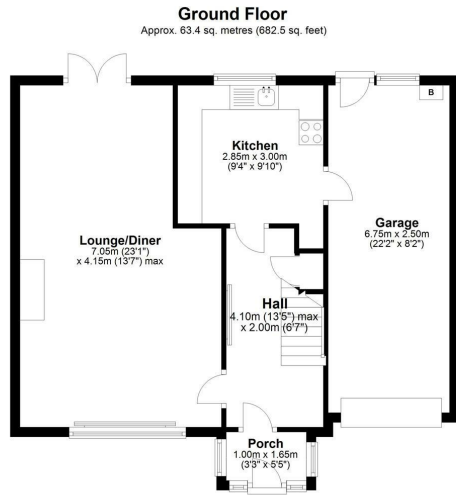
79 Goathland Avenue, Newcastle Upon Tyne, NE12 8HE

Offers Over £170,000

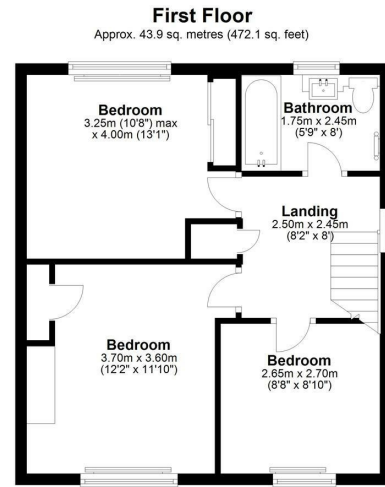
Hive Estates welcomes to the market this spacious three bedroom semi-detached home, perfectly placed within Benton. With an expansive garden to the rear and single driveway to the front, this property radiates light and comfort with an expansive dual aspect lounge, modern decor throughout and three double bedrooms.



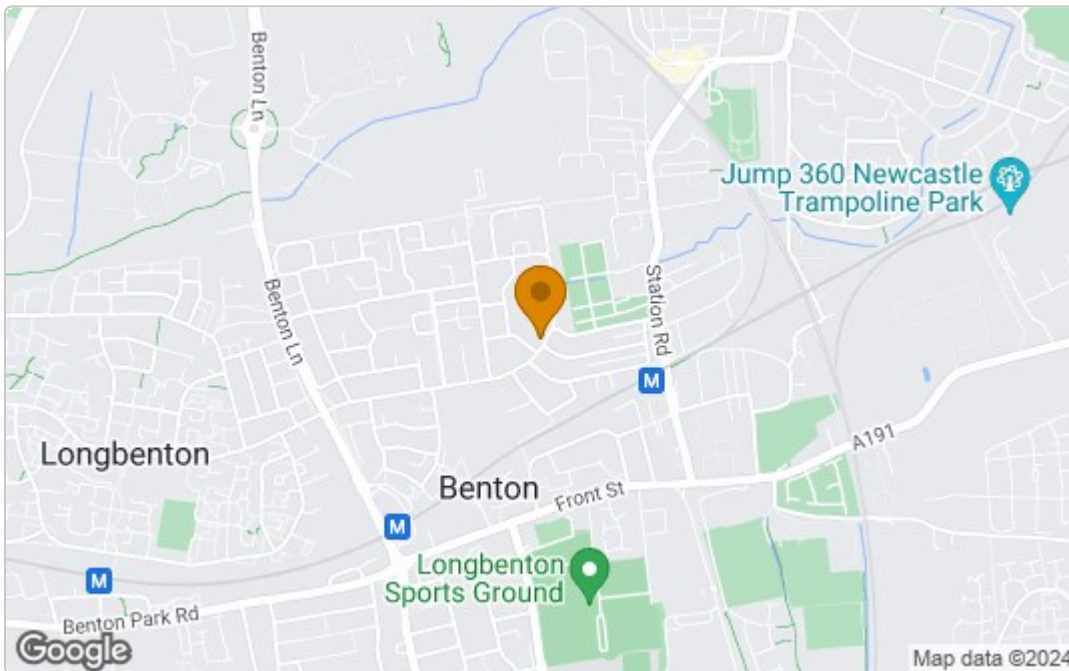
Floor Plan



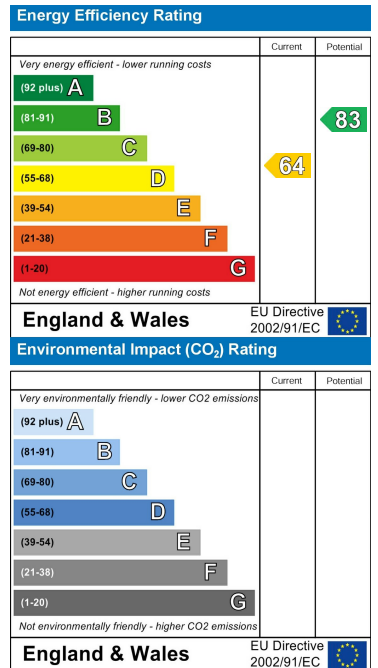
Total area: approx. 107.3 sq. metres (1154.6 sq. feet)



Area Map



Energy Efficiency Graph



These particulars, whilst believed to be accurate are set out as a general outline only for guidance and do not constitute any part of an offer or contract. Intending purchasers should not rely on them as statements of representation of fact, but must satisfy themselves by inspection or otherwise as to their accuracy. No person in this firm's employment has the authority to make or give any representation or warranty in respect of the property.