



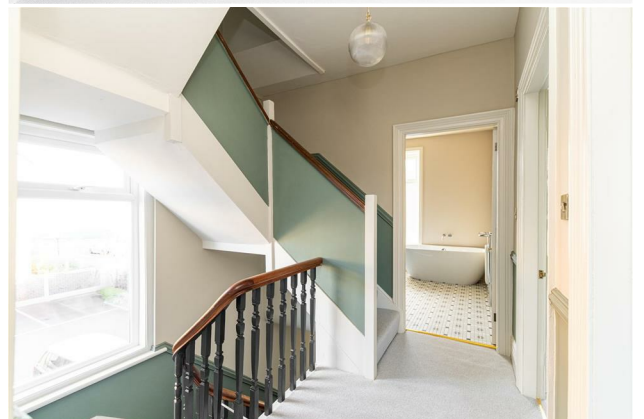
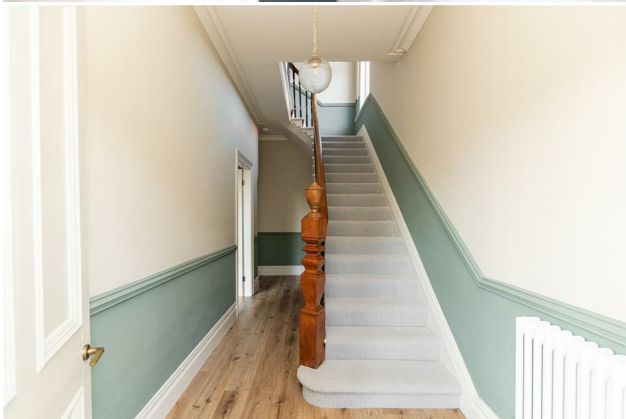
HIVE ESTATES



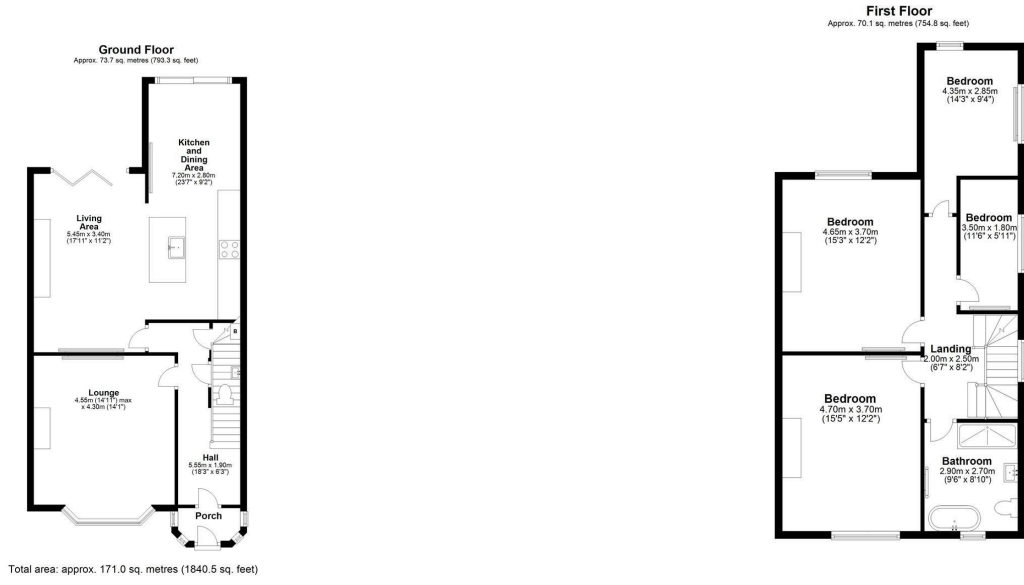
6 Eastbourne Gardens, Whitley Bay, NE26 1PT

Offers Over £600,000

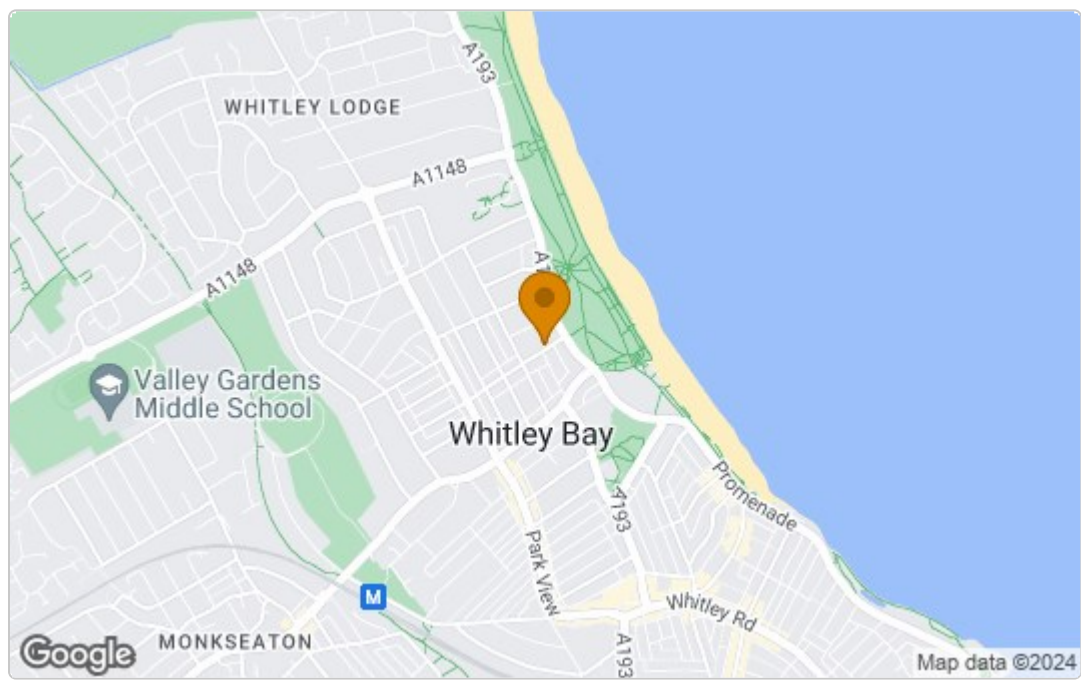
Hive Estates welcomes to the market this fully renovated and interior designed semi-detached home on Eastbourne Gardens, Whitley Bay. With stunning sea views and a short walk from the beach and Spanish City, this incredible property offers an ideal open plan living experience, complete with contemporary bi-folding and sliding doors across the rear of the home. Encompassing five bedrooms, two bright and open reception spaces, three brand new bathrooms and an expansive garden to the rear; this home epitomises modern coastal living.



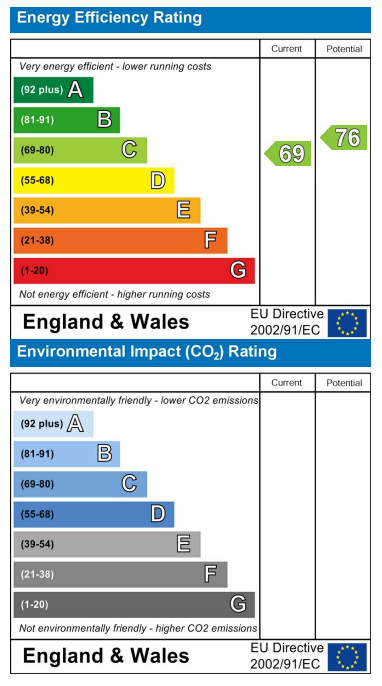
Floor Plan



Area Map



Energy Efficiency Graph



These particulars, whilst believed to be accurate are set out as a general outline only for guidance and do not constitute any part of an offer or contract. Intending purchasers should not rely on them as statements of representation of fact, but must satisfy themselves by inspection or otherwise as to their accuracy. No person in this firm's employment has the authority to make or give any representation or warranty in respect of the property.