



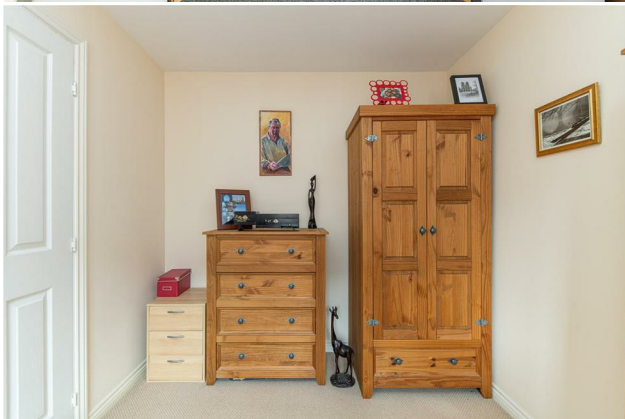
HIVE ESTATES



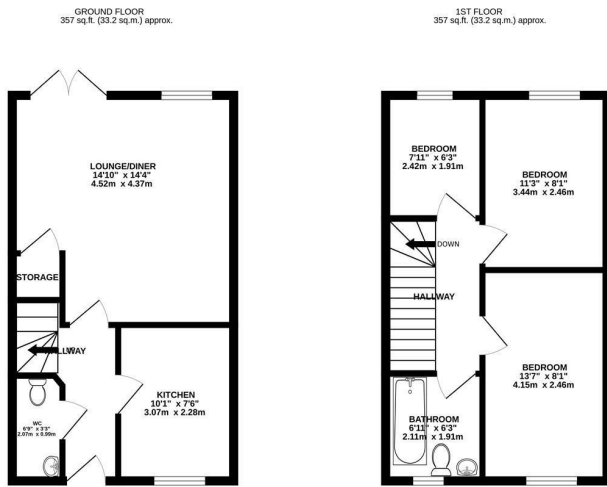
11 Dowding Lane, Newcastle Upon Tyne, NE3 3GP

Offers Over £165,000

Hive Estates welcomes to the market this modern three bedroom semi detached family home. Situated in the popular area of Kenton, the property offers pops of colour throughout, bright and spacious rooms and a sizeable rear garden. With a thoughtful configuration, this home caters to the needs of a variety of buyers.

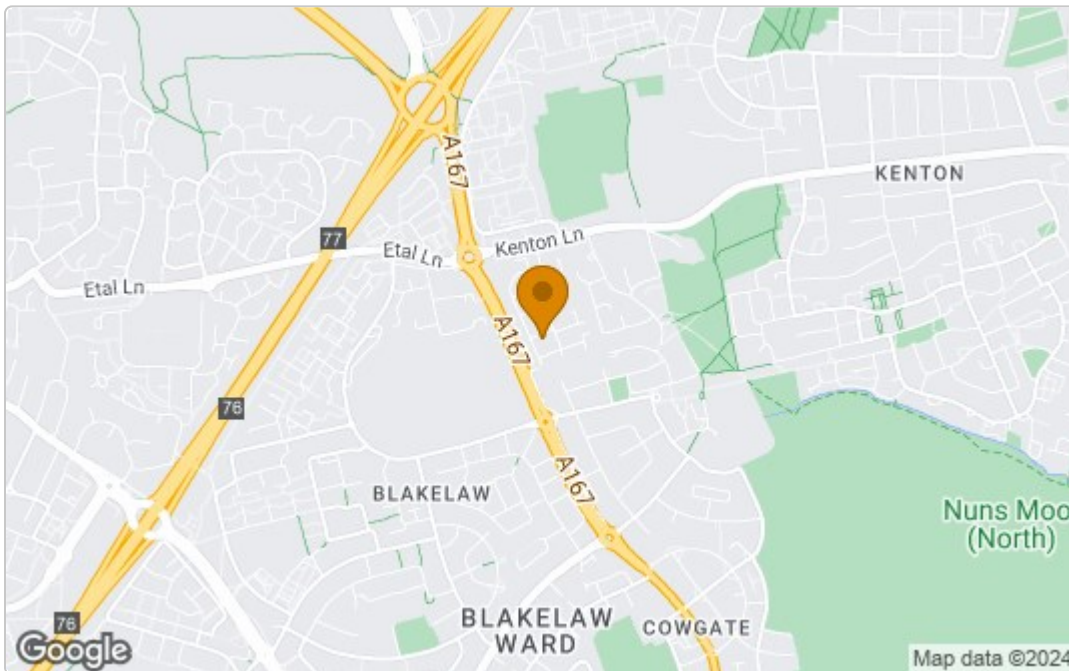


Floor Plan



DOWDING LANE 3GP
 TOTAL FLOOR AREA: 714 sq ft (66.3 sq m) approx.
 Whilst every effort has been made to ensure the accuracy of the foregoing contained here, measurements of doors, windows, rooms and any other items are approximate and no responsibility is taken for any error, omission or misstatement. This plan is for general guidance only and should be used as such by any prospective purchaser. The services, options and specifications shown have not been tested and no guarantee as to their opportunity or efficiency can be given.
 Map data ©2024

Area Map



Energy Efficiency Graph

Energy Efficiency Rating		Current	Potential
Very energy efficient - lower running costs			
(92 plus) A			91
(81-91) B		77	
(69-80) C			
(55-68) D			
(39-54) E			
(21-38) F			
(1-20) G			
Not energy efficient - higher running costs			
England & Wales		EU Directive 2002/91/EC	
Environmental Impact (CO ₂) Rating		Current	Potential
Very environmentally friendly - lower CO ₂ emissions			
(92 plus) A			
(81-91) B			
(69-80) C			
(55-68) D			
(39-54) E			
(21-38) F			
(1-20) G			
Not environmentally friendly - higher CO ₂ emissions			
England & Wales		EU Directive 2002/91/EC	

These particulars, whilst believed to be accurate are set out as a general outline only for guidance and do not constitute any part of an offer or contract. Intending purchasers should not rely on them as statements of representation of fact, but must satisfy themselves by inspection or otherwise as to their accuracy. No person in this firm's employment has the authority to make or give any representation or warranty in respect of the property.