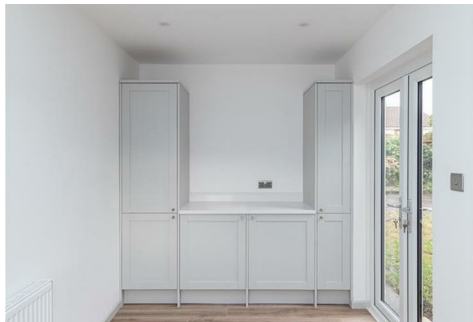




HIVE ESTATES



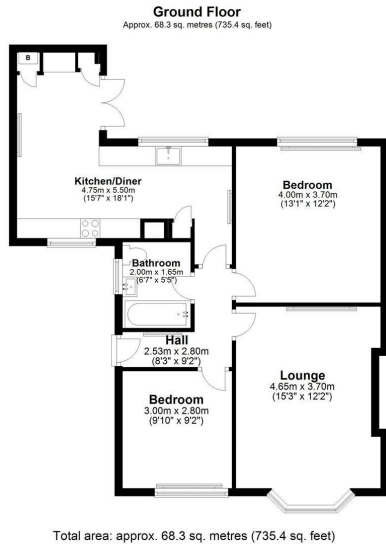
32 Greystoke Avenue, Newcastle Upon Tyne, NE16 5HR

Offers Over £250,000

Hive Estates welcomes to the market this fully renovated semi-detached bungalow, situated in a peaceful residential estate. With two double bedrooms all on one level, a modern open plan dining and kitchen space with quartz worktops, a fully tiled bathroom, and refurbished to a high specification, this home offers a turn-key experience.



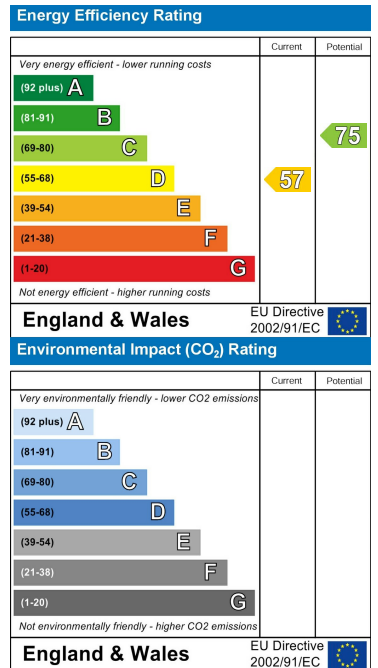
Floor Plan



Area Map



Energy Efficiency Graph



These particulars, whilst believed to be accurate are set out as a general outline only for guidance and do not constitute any part of an offer or contract. Intending purchasers should not rely on them as statements of representation of fact, but must satisfy themselves by inspection or otherwise as to their accuracy. No person in this firm's employment has the authority to make or give any representation or warranty in respect of the property.