



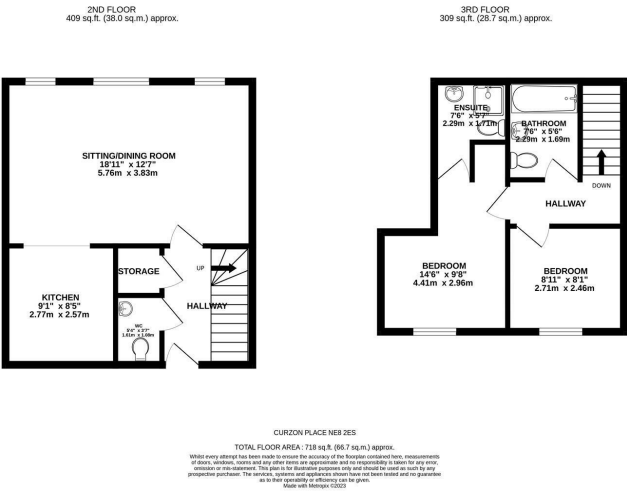
94 Curzon Place, Gateshead, NE8 2ES

Offers Over £130,000

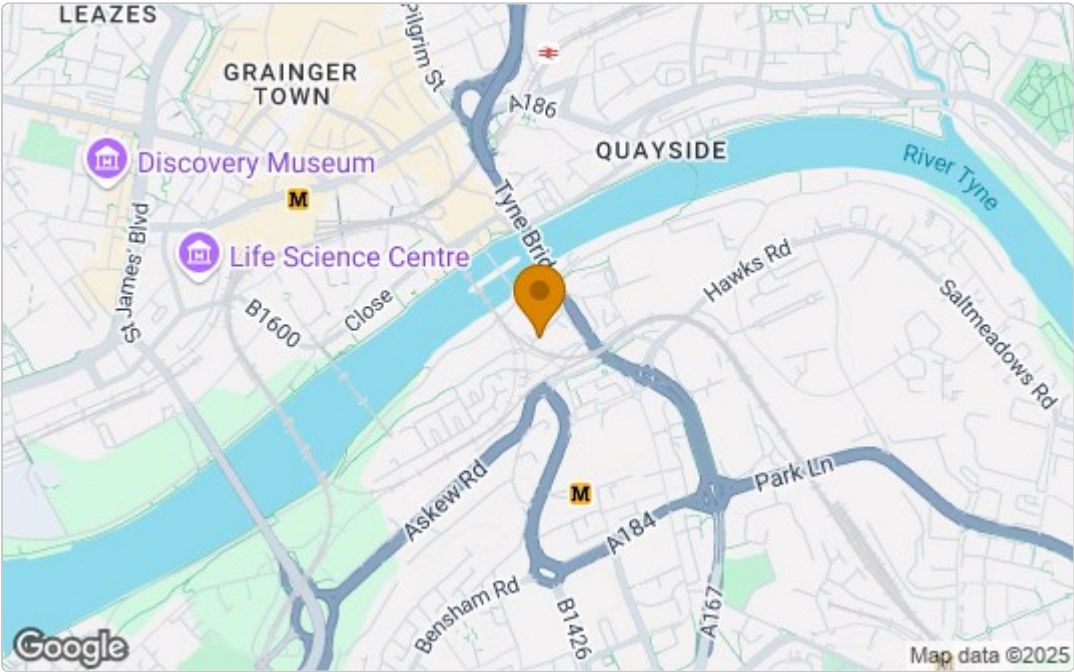
Hive Estates welcomes to the market this stunning contemporary duplex two bedroom apartment, benefitting from two bathrooms and secure underground car parking. Overlooking the Tyne Bridge, Set over two floors, this spacious and stylish apartment offers comfortable, modern living in a central location.



Floor Plan



Area Map



These particulars, whilst believed to be accurate are set out as a general outline only for guidance and do not constitute any part of an offer or contract. Intending purchasers should not rely on them as statements of representation of fact, but must satisfy themselves by inspection or otherwise as to their accuracy. No person in this firms employment has the authority to make or give any representation or warranty in respect of the property.

Energy Efficiency Graph

