



THE GOLDCREST

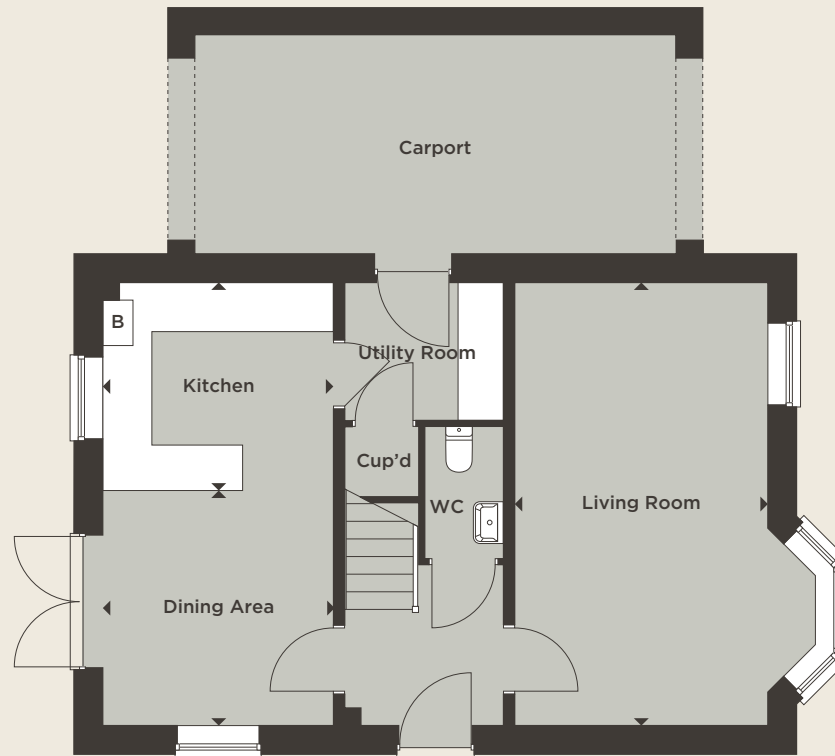


Four bedroom house

THE GOLDCREST

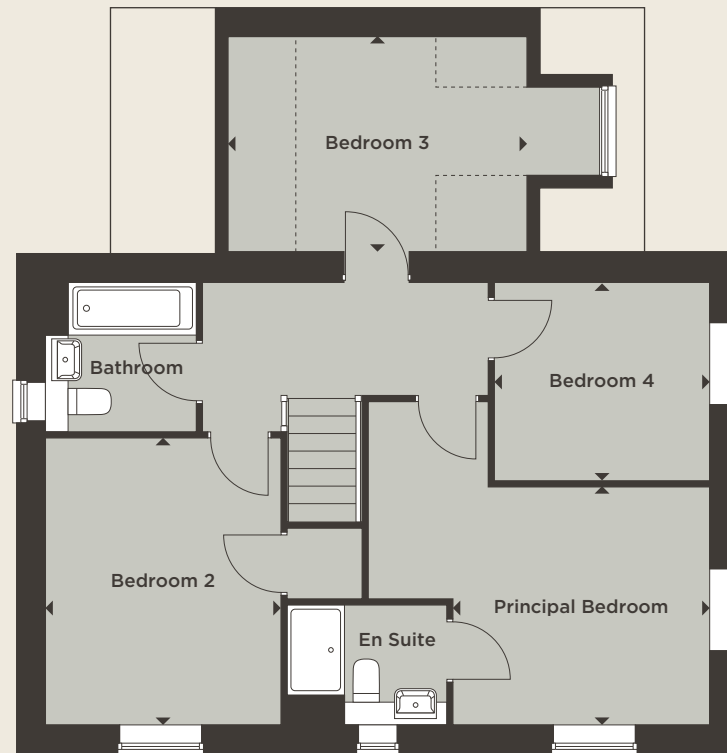
A well-planned four bedroom family home. The ground floor comprises an open-plan kitchen/dining area – ideal for entertaining, plus a separate dual aspect living room with feature bay window. A spacious principal bedroom complete with en suite is located on the first floor, along with three further bedrooms.

Total Internal Area 115.80 sq m 1246 sq ft



Ground Floor

Kitchen	3.05m x 2.75m	10'0" x 9'0"
Living Room	5.86m x 3.35m	19'3" x 11'0"
Dining Room	3.11m x 3.05m	10'2" x 10'0"



First Floor

Principal Bedroom	3.40m x 3.15m	11'2" x 10'4"
Bedroom 2	3.80m x 3.04m	12'6" x 10'0"
Bedroom 3	3.96m x 2.85m	13'0" x 9'4"
Bedroom 4	2.85m x 2.63m	9'4" x 8'8"
Total Internal Area	115.80 sq m	1246 sq ft



WWW.STLUKESPARK.CO.UK



COUNTRYSIDE

Places People Love

Computer generated image, architectural detailing, materials and landscaping may vary from the illustration.
All sizes are approximate with maximum finished dimensions. Countryside operates a policy of continuous product development and all room layouts may be subject to minor modifications. Kitchen and bathroom layouts and floor tiling shown are indicative. Radiator locations are not indicated. Please refer to development layout to review garage variations for each plot. Please note some plots are handed. Please speak to Sales Consultants for detailed information regarding specific properties.