



BEAULIEU GATE

These quirky maisonettes feature a one bedroom apartment to the ground floor and a three bedroom duplex apartment to the first and second floors, each with its own front door. Expect flexible layouts, high specification kitchens, luxurious bathrooms and allocated parking.



THE FIRECREST MAISONETTES

1 BEDROOM APARTMENT & 3 BEDROOM MAISONETTES

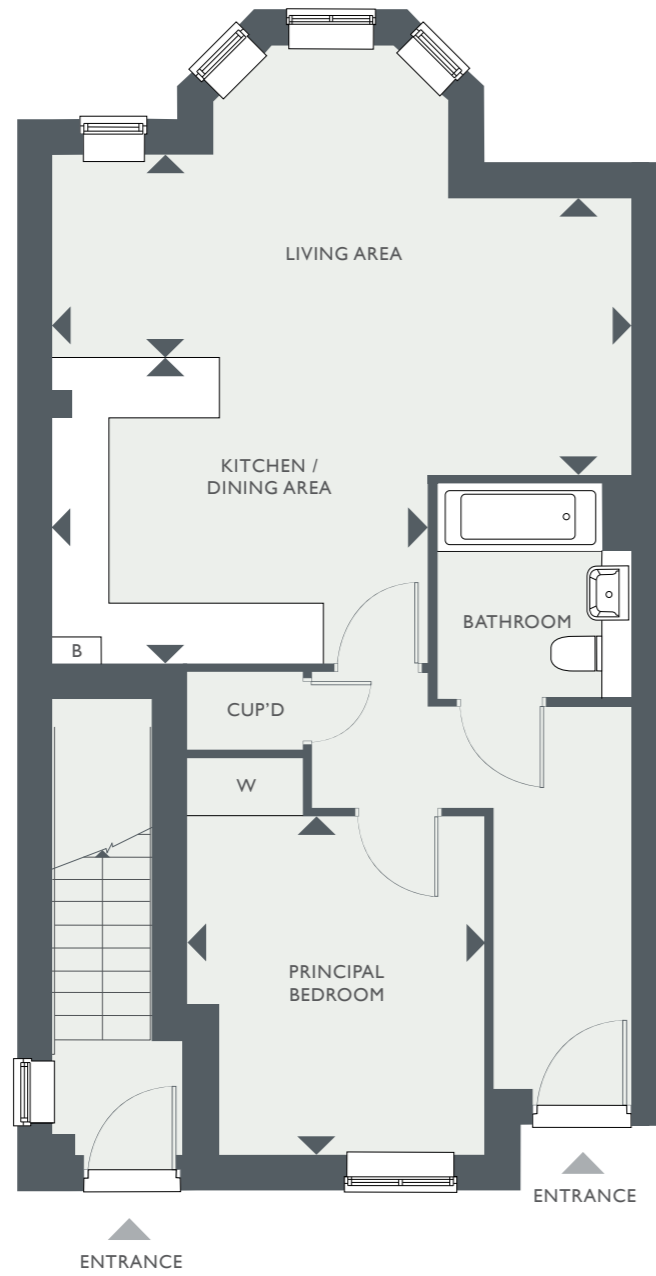
L&Q



COUNTRYSIDE
Homes

1 BEDROOM APARTMENT

TOTAL INTERNAL FLOOR SPACE 54.91 SQ M (591 SQ FT)
Plot 68, 69, 72, 73, 76 & 77



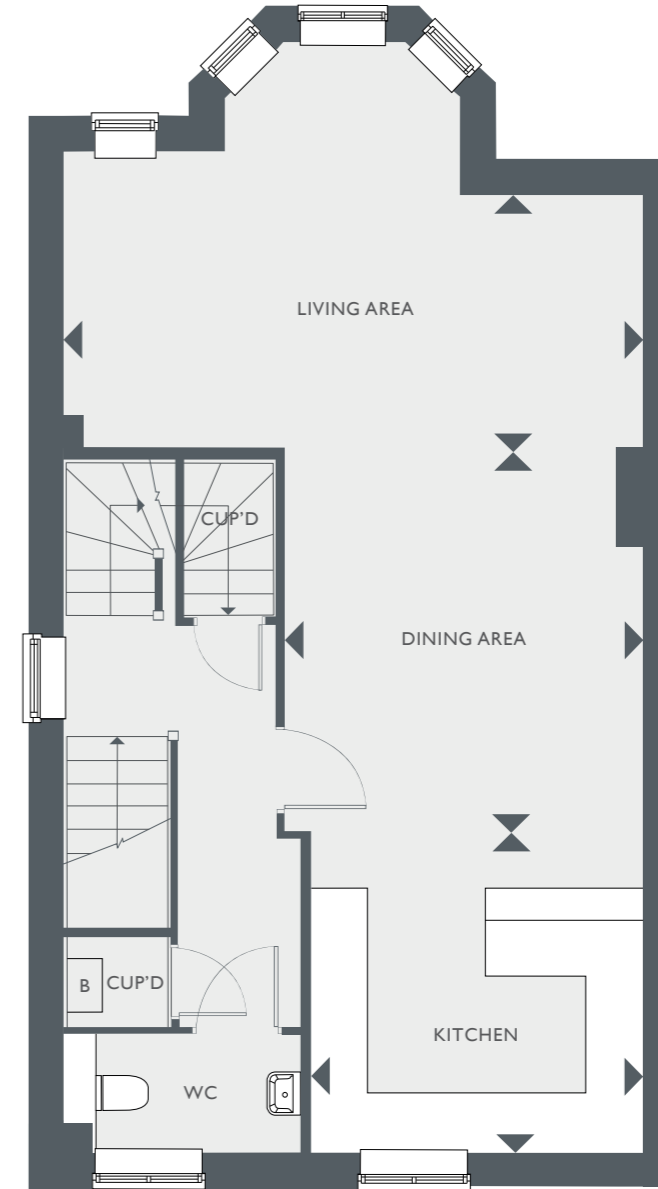
GROUND FLOOR

KITCHEN / DINING AREA	3.89M X 2.81M	12'9" X 9'9"
LIVING AREA	5.99M X 3.31M	19'8" X 9'5"
PRINCIPAL BEDROOM	3.50M X 3.06M	11'6" X 10'0"

B – BOILER CUP'D – CUPBOARD W – WARDROBE WC – CLOAKROOM

3 BEDROOM MAISONETTE

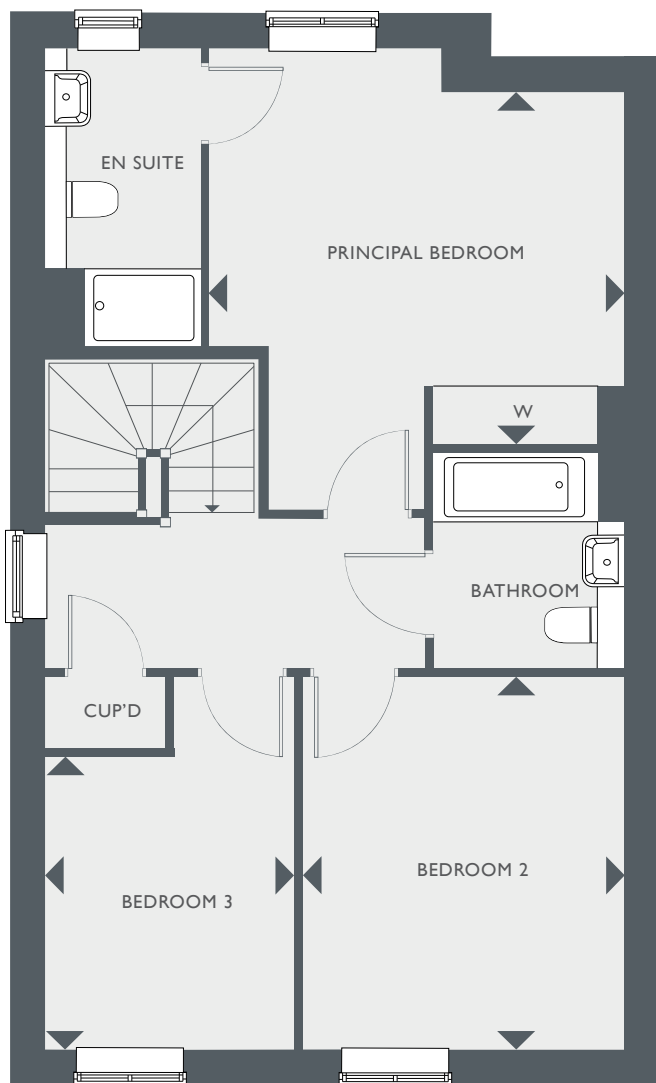
TOTAL INTERNAL FLOOR SPACE 124.3 SQ M (1338.3 SQ FT)
Plot 70, 71, 74, 75, 78 & 79



FIRST FLOOR

KITCHEN	3.30M X 3.45M	11'4" X 10'10"
LIVING AREA	3.09M X 5.99M	19'8" X 10'2"
DINING AREA	3.92M X 3.69M	12'10" X 12'1"

B – BOILER CUP'D – CUPBOARD W – WARDROBE WC – CLOAKROOM



SECOND FLOOR

PRINCIPAL BEDROOM	5.99M X 3.63M	19' 8" X 11' 11"
BEDROOM 2	3.85M X 3.36M	12' 8" X 11' 0"
BEDROOM 3	3.03M X 2.55M	9' 11" X 8' 5"

B – BOILER CUP'D – CUPBOARD
 W – WARDROBE WC – CLOAKROOM

BEAULIEU GATE CHELMSFORD

www.beaulieugate.co.uk

01245 801588
beaulieugate@countrysidepartnerships.com

Marketing Suite open daily from 10am – 5pm.
 Commonwealth Link, off Regiment Gate,
 Chelmsford, Essex, CMI 6BQ

This floorplan and computer generated image is indicative only. Some properties may vary significantly from that shown. All sizes are approximate with maximum finished dimensions. Countryside operates a policy of continuous product development and all room layouts may be subject to minor modifications. Kitchen and bathroom layouts are indicative. Radiator locations are not indicated. Floorplans are not shown to scale. Please refer to development layout to review garage/parking variations for each plot. Plot specification, internal and external finishes, dimensions, landscaping and differences to plots should be checked with a Sales Consultant before reservation. Countryside reserves the right to amend specifications as necessary.

