

BEAULIEU HEATH



Ideal for a young or growing family, this three bedroom home features a well-equipped kitchen and open plan living/dining area, with double doors leading onto the rear garden. On the first floor is an impressive principal bedroom with an en suite, two further bedrooms and a luxurious bathroom.



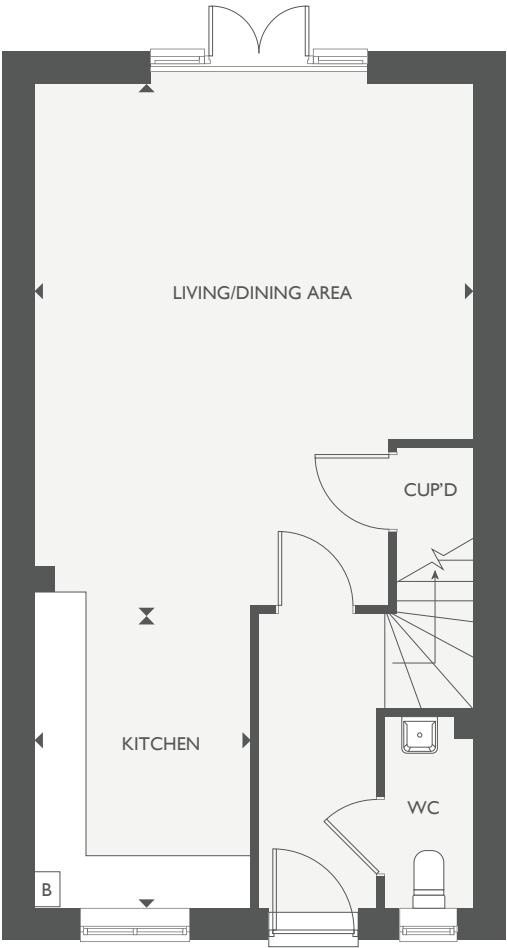
THE LAUREL

3 BEDROOM HOUSE



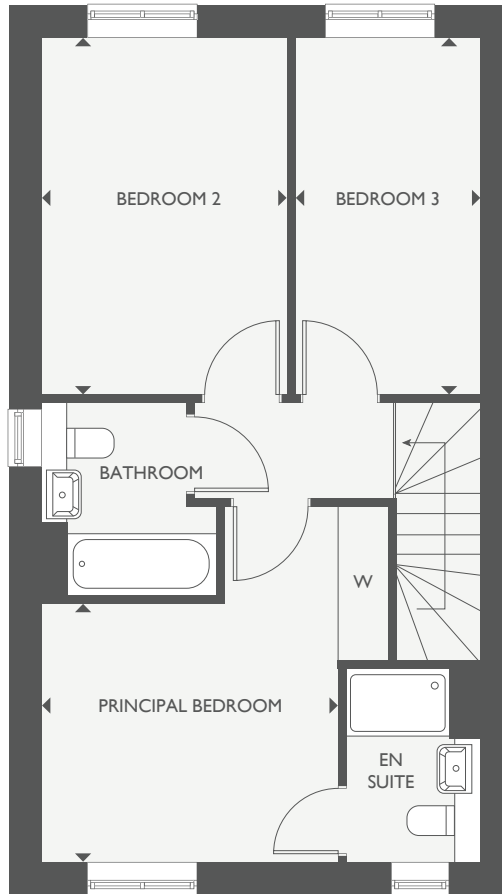
THE LAUREL

TOTAL INTERNAL FLOOR SPACE 95.3 SQ M (1,025 SQ FT)



GROUND FLOOR

LIVING/DINING AREA	6.11M X 5.02M	20'1" X 16'6"
KITCHEN	3.30M X 2.47M	10'10" X 8'2"



FIRST FLOOR

PRINCIPAL BEDROOM	3.37M X 2.93M	11'1" X 9'8"
BEDROOM 2	4.07M X 2.80M	13'5" X 9'3"
BEDROOM 3	4.08M X 2.12M	13'5" X 7'0"

This floorplan and computer generated image is indicative only and depicts a typical Laurel, some properties may vary significantly from that shown. All sizes are approximate with maximum finished dimensions. Countryside operates a policy of continuous product development and all room layouts may be subject to minor modifications. Kitchen and bathroom layouts are indicative. Radiator locations are not indicated. Floorplans are not shown to scale. Please refer to development layout to review garage/parking variations for each plot. Plot specification, internal and external finishes, dimensions, landscaping and differences to plots should be checked with a Sales Consultant before reservation. Countryside reserves the right to amend specifications as necessary. 58252/June 2024



BEAULIEU HEATH
CHELMSFORD

www.beaulieuheath.co.uk

01245 806353
beaulieuheath@countrysidehomes.com

Marketing Suite open daily from 10am – 5pm

Choat Place, off Commonwealth Link,
Chelmsford, Essex, CM1 6HS

