

BEAULIEU  
HEATH  
—  —

A stylish one bedroom house featuring an open plan living / dining area and a sleek kitchen with integrated appliances. This new home comes with a generously proportioned principal bedroom and allocated parking.



## THE BRAMBLING A

| BEDROOM HOUSE

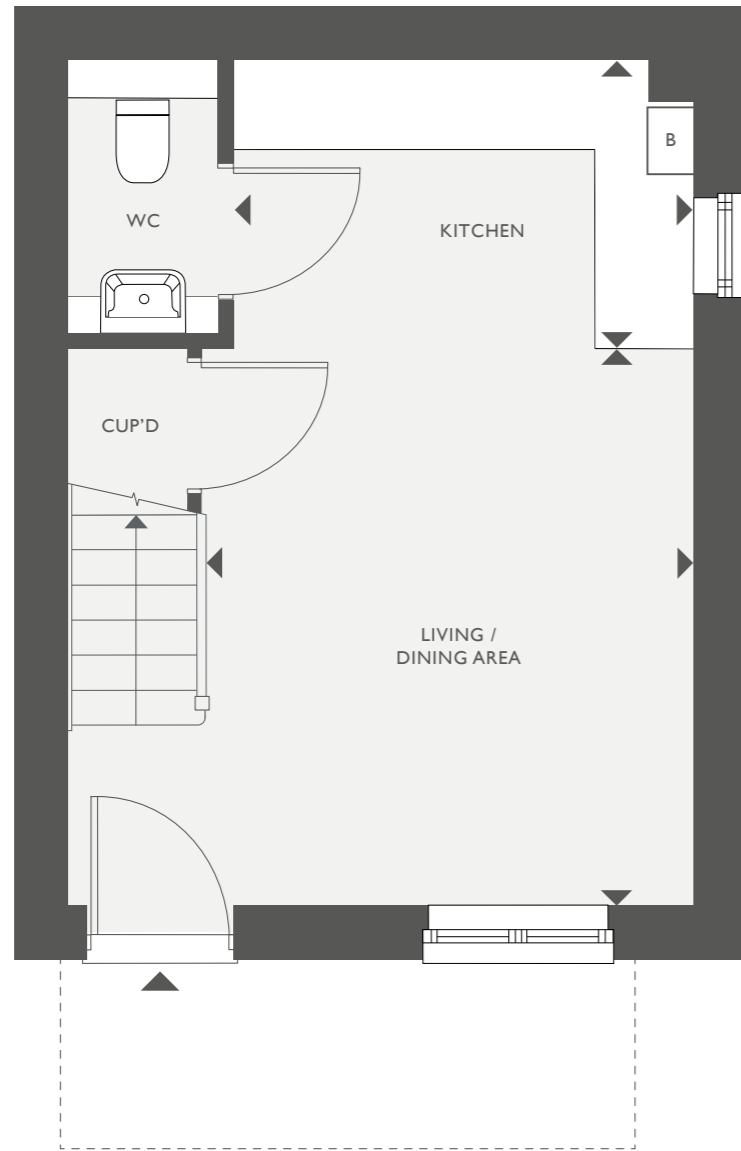


COUNTRYSIDE  
Places People Love

# THE BRAMBLING A

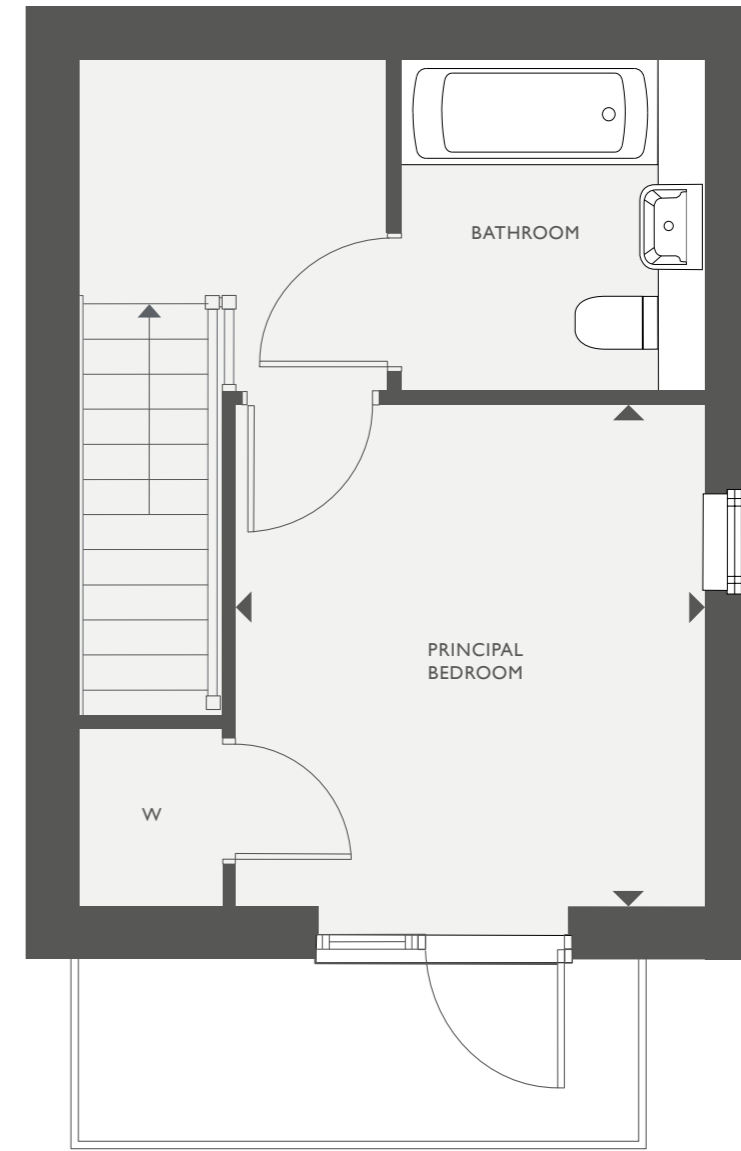
TOTAL INTERNAL FLOOR SPACE 46.38 SQ M (499.23 SQ FT)

PLOT 92



## GROUND FLOOR

KITCHEN	3.03M X 1.89M	9'9" X 6'2"
LIVING / DINING AREA	3.69M X 3.20M	12'1" X 10'5"



## FIRST FLOOR

PRINCIPAL BEDROOM	3.31M X 3.10M	10'8" X 10'1"
-------------------	---------------	---------------

WC – CLOAKROOM    B – BOILER    CUP'D – CUPBOARD    W – WARDROBE

This floorplan and computer generated image is indicative only and depicts a typical Brambling A, some properties may vary significantly from that shown. All sizes are approximate with maximum finished dimensions. Countryside operates a policy of continuous product development and all room layouts may be subject to minor modifications. Kitchen and bathroom layouts are indicative. Radiator locations are not indicated. Floorplans are not shown to scale. Please refer to development layout to review garage / parking variations for each plot. Plot specification, internal and external finishes, dimensions, landscaping and differences to plots should be checked with a Sales Consultant before reservation. Countryside reserves the right to amend specifications as necessary. All houses are freehold. To find out about any additional charges relating to these homes, please visit: [countrysidepartnerships.com](http://countrysidepartnerships.com)



**BEAULIEU HEATH**  
CHELMSFORD

[www.beaulieuheath.co.uk](http://www.beaulieuheath.co.uk)

**01245 801217**  
[beaulieuheath@cpplc.com](mailto:beaulieuheath@cpplc.com)

Marketing Suite open daily from 10am – 5pm.

Commonwealth Link, off Regiment Gate,  
Chelmsford, Essex CM1 6BQ

