



GOODMORES

— EXMOUTH —

APARTMENTS



3West Group

Specification

Every apartment at Goodmores will benefit from a high level of specification throughout. We are committed to delivering exceptional new build homes encompassing features you wouldn't normally find included as standard. From motion sensor lighting in the bathroom, to chrome electrical sockets giving a superior feel, every detail has been considered to create your perfect 3West new home experience.

Our kitchens

- Integrated Bosch appliances, including eye level oven, induction hob and extractor hood
- Integrated Bosch dishwasher
- Integrated Bosch fridge freezer
- Cutlery drawer
- British designed and built true handleless kitchens by Exeter-based System Six
- Upstand matching the worktop, plus a splashback to the hob area
- Laminate flooring
- Low energy LED downlights
- Chrome electrical sockets with USB port in selected outlets



Our bathrooms

- Wall hung WC with soft close seats
- Beautiful Grohe and Armera bathroom suite
- Choice of large walk-in shower or bath
- Stylish Vado chrome taps and shower controls
- Bathroom and ensuites come with a chrome heated towel rail
- Motion sensor lighting to master ensuites
- Fitted mirrors to master ensuites
- Half height ceramic tiling to every bathroom
- Ceramic floors tiles
- Rainfall shower heads to ensuites
- Low profile shower trays and semi frameless shower screens
- Shaver socket in bathroom and ensuite
- Low energy LED lights in all bathrooms and ensuites

Our bedrooms

- Luxury fitted carpets with high quality underlay throughout
- Chrome electrical sockets with USB port in selected outlets
- TV point to master bedroom

Communal areas

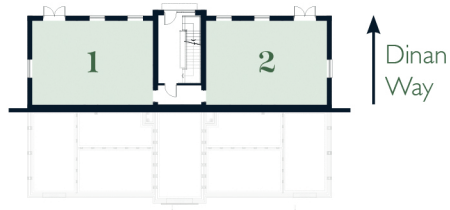
- CCTV covering entrances
- Video door entry
- Allocated private parking with electric car charging



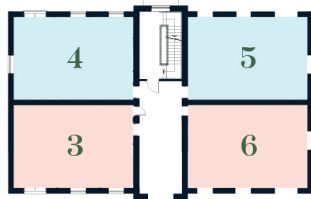
Inside your home

- Chiltern White internal walls with white satinwood finish to skirtings, architraves and window boards
- Oak veneer internal doors with chrome ironmongery
- Most have generous French doors
- Luxury carpets or hard flooring included throughout the home
- Thermostatically controlled electrical heating
- Air source heat pump powered hot water
- Broadband Fibre ready
- Chrome electrical sockets
- uPVC High Performance windows
- Excellent levels of insulation throughout

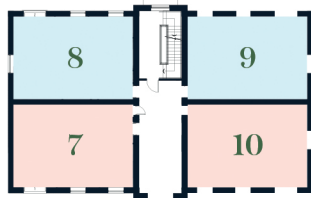
LOWER GROUND FLOOR



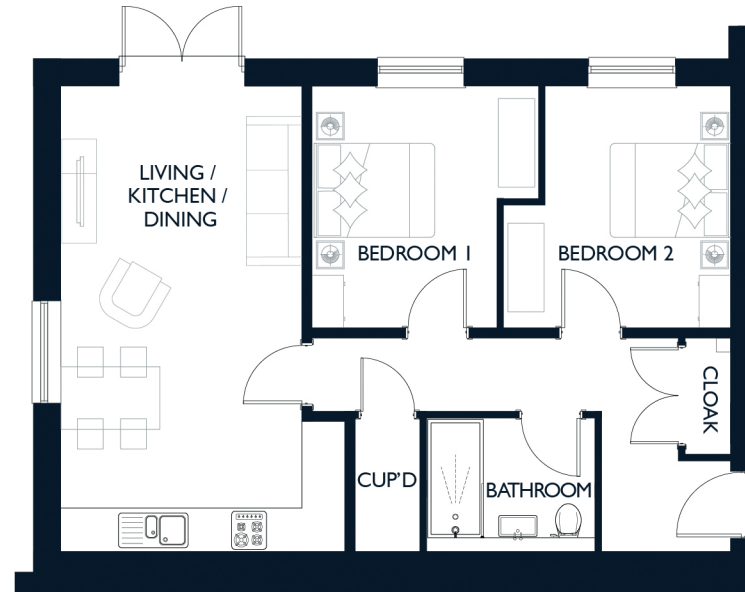
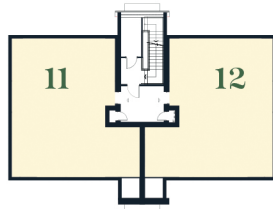
UPPER GROUND FLOOR



FIRST FLOOR



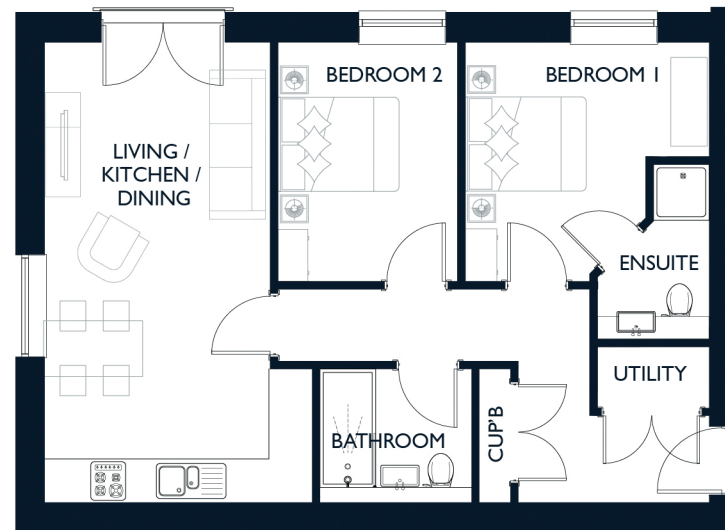
SECOND FLOOR



APARTMENTS 1 & 2

Internal Area 64.41 sq/m - 693.30 sq/ft

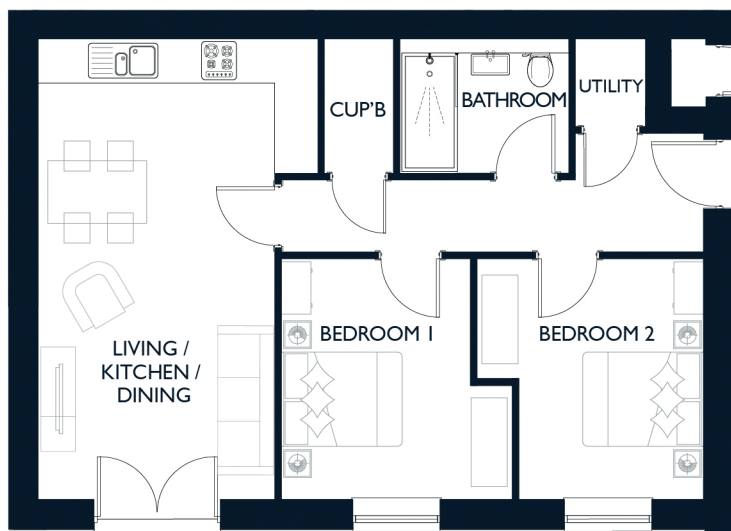
Living/Kitchen /Dining	4100 x 6714mm	13'5" x 22'0"
Bedroom 1	3347 x 3490mm	10'11" x 11'5"
Bedroom 2	3343 x 3490mm	10'11" x 11'5"



APARTMENTS 4, 5, 8 & 9

Internal Area 63.48 sq/m - 683.08 sq/ft

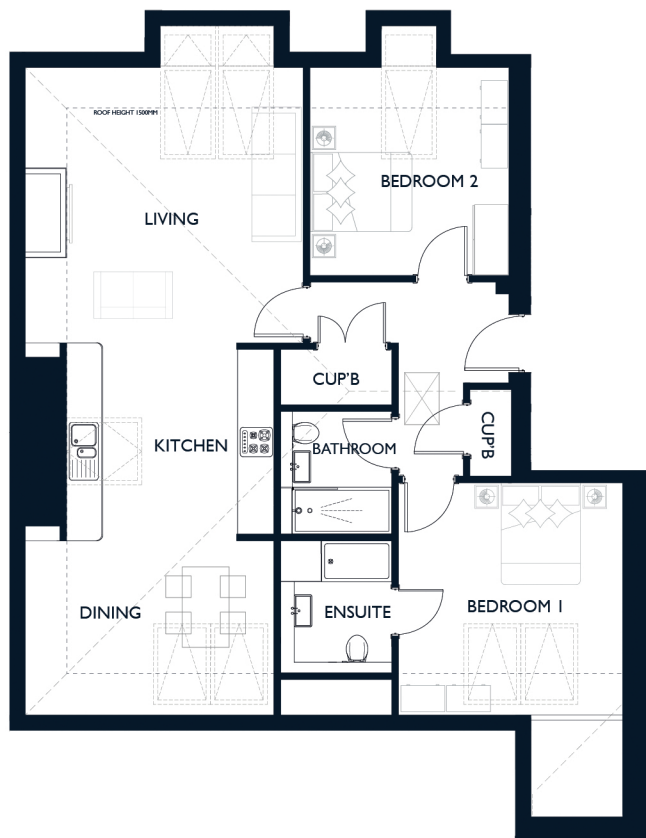
Living/Kitchen /Dining	3998 x 6605mm	13'1" x 21'8"
Bedroom 1	3501 x 3425mm	11'5" x 11'2"
Bedroom 2	2569 x 3425mm	8'5" x 11'2"



APARTMENTS 3, 6, 7 & 10

Internal Area 62.16 sq/m - 669.08 sq/ft

Living/Kitchen /Dining	3998 × 6605 mm	13'1" × 21'8"
Bedroom 1	3377 × 3422mm	11'0" × 11'2"
Bedroom 2	3325 × 3422mm	10'10" × 11'2"



APARTMENTS 11 & 12

Internal Area 79.0 sq/m - 850.0 sq/ft

Living	4044 × 4000mm	13'3" × 13'1"
Kitchen	3544 × 3381mm	11'8" × 11'1"
Dining	3544 × 2275mm	11'8" × 7'6"
Bedroom 1	3833 × 3263mm	12'7" × 10'8"
Bedroom 2	3387 × 2850mm	11'1" × 9'4"

All dimensions indicated are approximate and furniture layout is for illustrative purposes only. Penthouse dimensions are to 1500mm room height. Apartments may be a 'handed' (mirror image) version of the illustrations. See individual plot details for more information. The developer reserves the right to make alterations to the specification and elevational treatments without prior notice.

The Development

The Lymptone 2 BEDROOM HOME
Homes 55, 56, 68, 69, 72, 73, 173 & 174

The Woodbury 3 BEDROOM HOME
Homes 11-14, 26-28, 33, 34, 37, 38, 41-46, 57-59, 65-67, 175 & 176

The Topsham 3 BEDROOM HOME
Homes 10, 35, 36, 49 & 50

The Sidmouth 3 BEDROOM HOME
Homes 15-17, 25, 30, 53, 74 & 149

The Branscombe 4 BEDROOM HOME
Homes 31, 32, 39, 40, 47, 48, 51, 52, 71, 72, 147 & 148

The Budleigh 4 BEDROOM HOME
Home 9

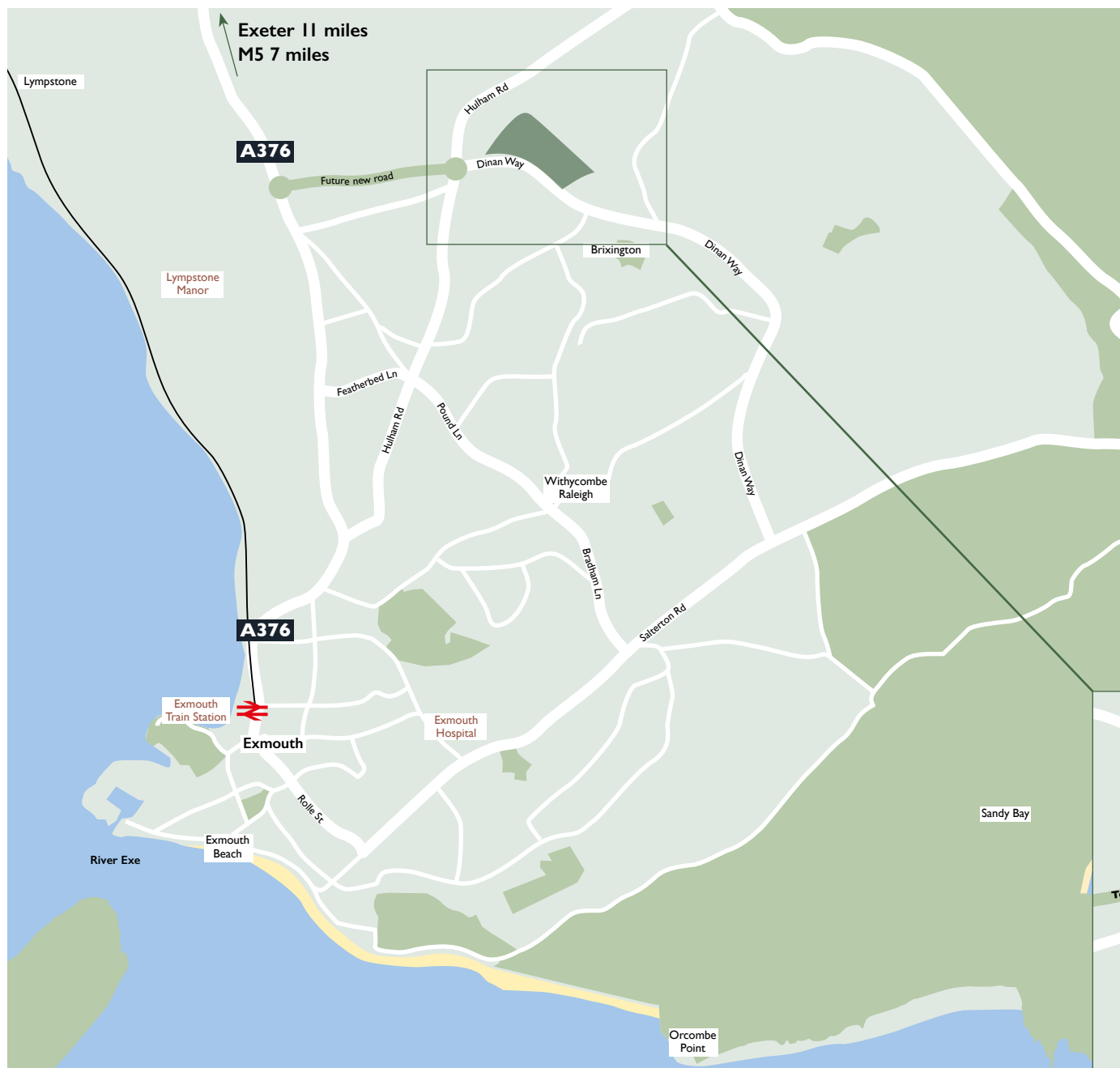
The Ottery 4 BEDROOM HOME
Homes 54 & 150

The Dartmouth 4 BEDROOM HOME
Homes 146 & 172

Apartments







Find us

**Goodmores,
Dinan Way,
Exmouth EX8 5FP**

For SatNav use EX8 5SB



3West Group

For all enquiries please contact:
goodmores@3west.group

www.3west.group

