



DUROY | 3 BEDROOM

WEAVERS WAY



The Duroys feature considerable living space across two floors. Upstairs, this includes three bedrooms – one double with ensuite, one additional double bedroom, and a single bedroom. Downstairs, the generous open plan kitchen–dining area and separate living room offer ample opportunities for both entertaining and cosy evenings in.

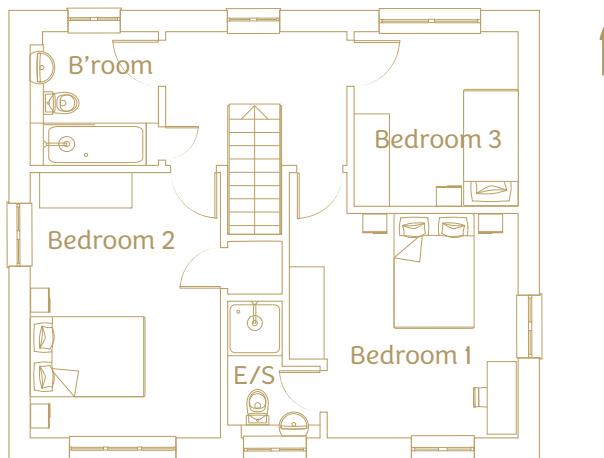
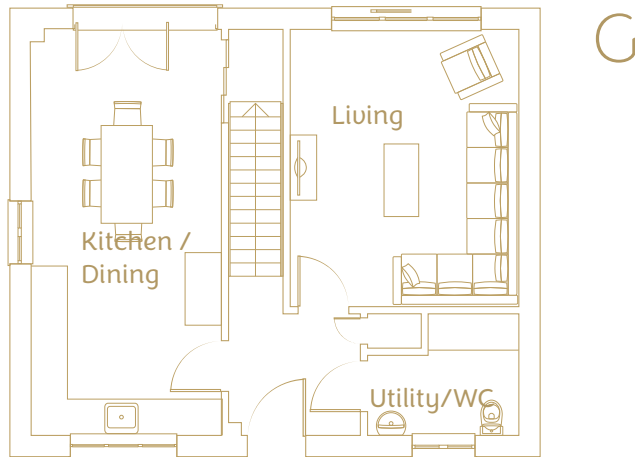
These spacious eco homes benefit from high-end fixtures and fittings throughout. In the kitchen are solid

wood Shaker kitchens by System Six and appliances by Siemens. Quartz worktops feature in both the kitchen and the separate laundry room. In the bathroom, porcelain tiles line the floors and walls. Wool carpets and engineered oak flooring give the living spaces a feeling of luxury as well as providing exceptional comfort.

The exterior features of the Duroys include large gardens, two private off–road parking spaces and a single garage.

PLOT 7, 9\* & 10

Plot 9 is a mirror image ( kitchen / diner on the right hand side)



**Total internal area: 108.2 sq m**

#### Ground floor

Kitchen/dining 21.4m<sup>2</sup> | 3.1m x 6.7m

Living 17.4m<sup>2</sup> | 3.8m x 4.6m

Utility/WC 4.3m<sup>2</sup> | 2.5m x 2.0m

#### First floor

Bedroom 1 13.9m<sup>2</sup> | 3.8m x 3.7m

Ensuite 2.8m<sup>2</sup> | 1.5m x 1.2m

Bedroom 2 13.8m<sup>2</sup> | 3.1m x 2.4m

Bedroom 3 7.8m<sup>2</sup> | 2.7m x 2.9m

Bathroom 4.7m<sup>2</sup> | 2.1m x 2.2m

PLOT 7, 9\* &amp; 10