



Modern Mid Terrace HOME

CHECK OUT this Mid Terrace Home! Modern & spacious, private, tucked away accessed via a walkway, A Taylor Wimpey "Gosford" design. Living Room overlooking front, Kitchen Dining overlooking rear. 3 Bedrooms, En-suite + Bathroom & Cloakroom. Off Road Parking, Garden & Patio. NO CHAIN Great 1st Home!

3 Little Mead | Exeter | EX5 7GE



thoroughly good property agents



PROPERTY TYPE

Mid Terrace House



SIZE

873 sq ft



LOCATION

Cranbrook



AGE

Modern



BEDROOMS

3



RECEPTION ROOMS

1



BATHROOMS

2



WARMTH

EON District Heating
System



PARKING

Off Road Parking, Allocated
Parking



OUTSIDE SPACE

Garden, Patio



EPC RATING

86 (B)



COUNCIL TAX BAND

C



in a nutshell...

- Taylor Wimpey "Gosford" design
- 3 Bedrooms
- Living Room
- Kitchen Dining Room
- En-suite Shower, Bathroom & Cloakroom
- NO CHAIN
- Off Road Parking
- Private Green leafy view - off walkway
- Close to new Town Centre, Shops, Schools





the details...

Check out this lovely modern Taylor Wimpey build, Mid Terrace, "Gosford Design" Family Home.

Located off a cul-de-sac, accessed via a walkway to the front, close to the newly built Town Centre, local school, public transport link and Country Park.

This home has a beautiful green and private Garden not overlooked to the rear. Plenty of space for Garden furniture and Barbecue!. The modern Kitchen has plenty of space for a dining table and overlooks the rear Garden. There is also a ground floor Cloakroom and a good size Living Room that overlooks the front, iwth a private green and leafy outlook.

Upstairs are three Bedrooms, the main Bedroom overlooking the front with an en-suite Shower Room. The Bathroom sits in the middle of the house and the two further Bedrooms overlook the rear Garden.

To the rear there are two parking spaces with side gated access to the Garden & Shed space..

Well worth a look!

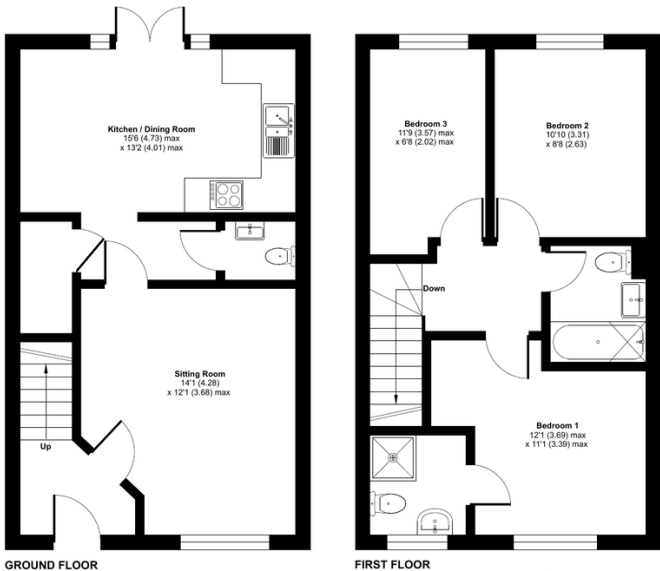
Tenure: Freehold
Council Tax: Band C





Little Mead, Cranbrook, Exeter, EX5

Approximate Area = 873 sq ft / 81.1 sq m
For identification only - Not to scale



Floor plan produced in accordance with RICS Property Measurement Standards incorporating International Property Measurement Standards (IPMS2 Residential). © nichecom 2024. Produced for Ashtons Complete (Complete Property). REF: 1158833



Our note. For clarification we have prepared these sales particulars as a general guide and have not carried out a detailed survey nor tested the services, appliances or fittings. Room sizes should not be relied upon for carpets or furnishings. If there are any important matters which are likely to affect your decision to buy, please contact us before viewing this property. These particulars, whilst believed to be accurate, are set out as a general outline only for guidance and do not constitute any part of an offer or contract. Intending purchasers should not rely on them as statements of representation of fact, but must satisfy themselves by inspection or otherwise as to their accuracy. No person in the employment of Complete Property Services has the authority to make or give any representation or warranty in respect of the property.

SKETCH PLAN FOR ILLUSTRATIVE PURPOSES ONLY. All measurements and sizes and locations of walls, doors, window fittings and appliances are shown conventionally and are approximate only and cannot be regarded as being a representation either by the Seller or his Agent. We hope that these plans will assist you by providing you with a general impression of the layout of the accommodation. The plans are not to scale nor accurate in detail. © Unauthorised reproduction prohibited.

As part of the service we offer we may recommend ancillary services to you which we believe will help with your property transaction. We wish to make you aware that should you decide to proceed we will receive a referral fee. This could be a fee, commission, payment or other reward. We will not refer your details unless you have provided consent for us to do so. You are not under any obligation to provide us with your consent or to use any of these services, but where you do you should be aware of the following referral fee information. You are also free to choose an alternative provider. To find out more about this, please speak to a member of the team.



About the town...

The popular town of Cranbrook is located on the outskirts of the historic city of Exeter. Cranbrook has excellent commuting links with Exeter Airport and the M5 Motorway only a short drive away. Cranbrook also has the benefit of its own railway station connecting to the city centre. As Cranbrook grows so do the facilities, already having a thriving community with the Younghayes centre at its heart. There are local shops along with a doctor's surgery, pharmacy and a highly regarded primary school. Cranbrook really is an ideal setting for growing families and retirement.



the location...

Shopping

Late night pint of milk: Co-op approx. 350 ft.

Town centre: The property is in the centre of the town

Supermarket: Sainsbury's 4 miles

Relaxing

Beach: Exmouth 11.6 miles

Park: approx. 370 ft.

Travel

Bus stop: Younghayes Road 230 ft.

Train station: Cranbrook 0.5 mile

Main travel link: M5 2.4 miles

Airport: Exeter 2.2 miles

Schools

St Martins Primary School: approx. 225 ft

Cranbrook Education Campus: 1.2 miles

Please check Google maps for exact distances and travel times.

Property postcode: **EX5 7GE**





**Need a more complete
picture? Get in touch with
your local branch...**

Tel **01392 422500**
Email exeter@completeproperty.co.uk
Web completeproperty.co.uk

Complete
141 Younghayes Rd
Cranbrook
EX5 7DR

Are you selling a property too? Call us to get a set of property details like these...

selling

letting

land &
new homes

signature
homes

complete.