



## Modern "Easedale" Semi Detached HOME

CHECK OUT this lovely modern Taylor Wimpey built Semi Detached HOME. Corner plot, front side and rear Gardens, set back from the road, Cul De Sac location, close to new Town Centre & Country Park. Dual aspect Living & Kitchen Dining Room, 3 Bedrooms. En-suite Shower & Bathroom. Off Road Parking.

8 Horsewell Road | Exeter | EX5 7JB



thoroughly good property agents



PROPERTY TYPE

Semi Detached House



SIZE

915 sq ft



LOCATION

Town



AGE

Modern



BEDROOMS

3



RECEPTION ROOMS

1



BATHROOMS

2



WARMTH

Eon District Heating System



PARKING

Off Road Parking



OUTSIDE SPACE

Garden, Patio



EPC RATING

85 B



COUNCIL TAX BAND

C



### in a nutshell...

- Corner Plot, close to Town Centre
- Cul-de-sac location
- 3 Bedrooms
- Dual aspect Living + Kitchen Dining
- Sunny Garden
- En-suiet Shower, Bathroom & Cloakroom
- Immaculately Presented throughout
- Off Road Parking
- Schools, Shops, Amenities & Country Park





## the details...

CHECK OUT this great FAMILY HOME!

Built by Taylor Wimpey, of "Easedale" design, sitting on a corner plot at the head of a cul de sac, with wrap around frontage and Off-Road Parking to the rear of the Garden with gated access to the Garden.

A double fronted dual aspect layout, with Living Room overlooking the rear Garden, with French doors, and front and the Kitchen Dining Room overlooking the side and front.

The Kitchen, with upgraded ceramic floor tiles throughout this area, the hallway and Cloakroom, is fully fitted with electric oven, hob & cooker hood, dishwasher, washing machine and fridge/freezer, with additional window overlooking the side giving this space plenty of natural light and room for a family dining table.

The Entrance Hall gives access to both these room, the ground floor Cloakroom, a storage cupboard the newel shaped staircase, again with upgraded ceramic tiled floor.

The landing with galleried balustrade overlooks the stairs and gives access to all three Bedrooms and the family Bathroom.

The main Bedroom, dual aspect front and rear has built in wardrobes, lots of natural light and an En-suite Shower Room, with tiled floor and heated towel rail.

The second double Bedroom dual aspect overlooking the front and side is a lovely room, again with plenty of natural light. The third Bedroom makes a large single or ideal home office. The Bathroom with tiled floor and heated towel rail gives that extra family space.

The rear Garden is enclosed, private and has a rear gate leading to the parking area. In front of the house are Garden spaces giving a nice frontage to the property.

Well worth a look!

Tenure Freehold  
Council Tax Band C

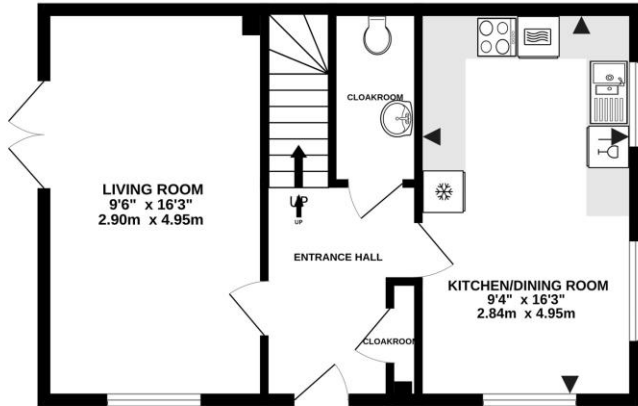


## what the owner loves most...

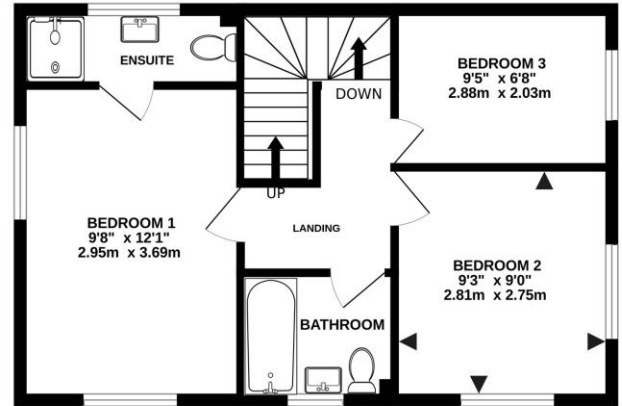


## the floorplan...

GROUND FLOOR  
474 sq.ft. (44.0 sq.m.) approx.



1ST FLOOR  
487 sq.ft. (45.3 sq.m.) approx.



TOTAL FLOOR AREA : 915sq.ft. (85.0 sq.m.) approx.

Whilst every attempt has been made to ensure the accuracy of the floorplan contained here, measurements of doors, windows, rooms and any other items are approximate and no responsibility is taken for any error, omission or mis-statement. This plan is for illustrative purposes only and should be used as such by any prospective purchaser. The services, systems and appliances shown have not been tested and no guarantee as to their operability or efficiency can be given.  
Made with Metropix ©2024



Our note. For clarification we have prepared these sales particulars as a general guide and have not carried out a detailed survey nor tested the services, appliances or fittings. Room sizes should not be relied upon for carpets or furnishings. If there are any important matters which are likely to affect your decision to buy, please contact us before viewing this property. These particulars, whilst believed to be accurate, are set out as a general outline only for guidance and do not constitute any part of an offer or contract. Intending purchasers should not rely on them as statements of representation of fact, but must satisfy themselves by inspection or otherwise as to their accuracy. No person in the employment of Complete Property Services has the authority to make or give any representation or warranty in respect of the property.

**SKETCH PLAN FOR ILLUSTRATIVE PURPOSES ONLY.** All measurements and sizes and locations of walls, doors, window fittings and appliances are shown conventionally and are approximate only and cannot be regarded as being a representation either by the Seller or his Agent. We hope that these plans will assist you by providing you with a general impression of the layout of the accommodation. The plans are not to scale nor accurate in detail. © Unauthorised reproduction prohibited.

As part of the service we offer we may recommend ancillary services to you which we believe will help with your property transaction. We wish to make you aware that should you decide to proceed we will receive a referral fee. This could be a fee, commission, payment or other reward. We will not refer your details unless you have provided consent for us to do so. You are not under any obligation to provide us with your consent or to use any of these services, but where you do you should be aware of the following referral fee information. You are also free to choose an alternative provider. To find out more about this, please speak to a member of the team.





Need a more complete picture? Get in touch with your local branch...

Tel [01392 422500](tel:01392422500)  
Email [exeter@completeproperty.co.uk](mailto:exeter@completeproperty.co.uk)  
Web [completeproperty.co.uk](http://completeproperty.co.uk)

Complete  
141 Younghayes Rd  
Cranbrook  
EX5 7DR

Are you selling a property too? Call us to get a set of property details like these...

selling

letting

land &  
new homes

signature  
homes

**complete.**