



Westbourne, Telford  
Asking price £110,000



Peter Richardson Estates



# Asking price £110,000

Three bedroom mid-terrace house, located in a popular area of Telford.

On the ground floor this property is simply comprised of entry/hallway, a large kitchen/diner and spacious living room.

On the first floor the property benefits from two double bedrooms, one single bedroom with built in storage and a two-piece bathroom suite with a separate W/C.

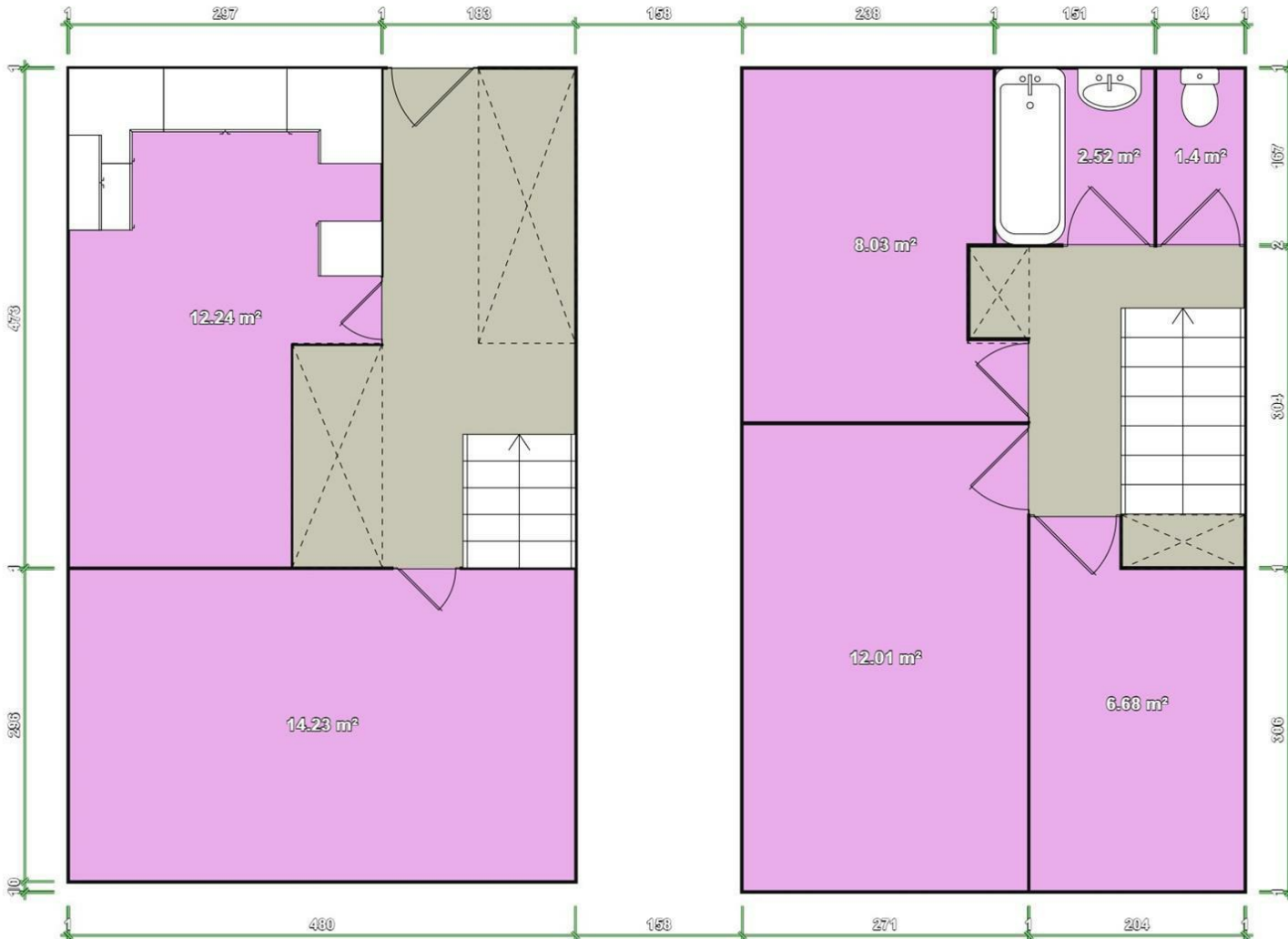
This property benefits from front and rear gardens, gas central heating and double glazing throughout.

Communal parking available. The property is within walking distance to local schools, bus links and local amenities.

This property would make a great buy to let opportunity.

Viewings are highly recommended.





Peter Richardson Estates Limited

10-12 Hills Lane Drive  
 Madeley, Telford  
 TF7 4BP

01952 588807  
 telford@peterrichardsons.co.uk

**Energy Efficiency Rating**

	Current	Potential
Very energy efficient - lower running costs		
(92 plus) <b>A</b>		<b>86</b>
(81-91) <b>B</b>		
(69-80) <b>C</b>	<b>75</b>	
(55-68) <b>D</b>		
(39-54) <b>E</b>		
(21-38) <b>F</b>		
(1-20) <b>G</b>		
Not energy efficient - higher running costs		

**England & Wales**

EU Directive  
 2002/91/EC

