

DESCRIPTION

Two Bedroom Ground floor Apartment.

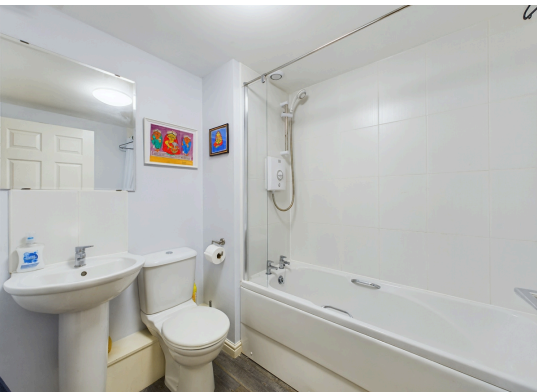
This modern apartment benefits from private balcony and en-suite bathroom.

Situated in an ideal location for commuters with all amenities close by.

Internal viewing highly recommended!

- The accommodation comprises of:
- WELCOMING HALLWAY
- BRIGHT AND SPACIOUS LOUNGE
- BALCONY
- PRIMARY BEDROOM WITH EN-SUITE
- SECOND DOUBLE BEDROOM
- FAMILY BATHROOM
- AMPLE STORAGE
- PARKING AVAILABLE

Viewings by Appointment with Gibson Estate Agents 0131 2973177



LOCATION

Slateford is a suburb of Edinburgh which lies west of the City Centre. There are good everyday amenities available locally including banks and small convenience stores as well as a large Asda supermarket at Newmart Road, Marks and Spencer Foodhall and other outlets at Edinburgh West Retail Park off Chesser Avenue. Leisure amenities nearby include Fountain Park and Edinburgh Quay, between them offering a cinema complex, bowling alley, gym and restaurants. There is also a popular bicycle route along Union Canal towards Glasgow. A regular bus service operates to the City Centre and surrounding areas. Haymarket and Slateford Railway Stations are easily accessible. Commuters can find easy access to the city bypass, the M8/M9, Edinburgh International Airport and the Forth Bridge for routes north

