

Floor 0



Floor 1





# DESCRIPTION

New to the market and not to be missed!

This one bedroom end terrace home is the perfect first time buy in turn key condition with all essential amenities close by. The home benefits from a private garden and ample storage throughout.

Internal viewing highly recommended to appreciate this property.

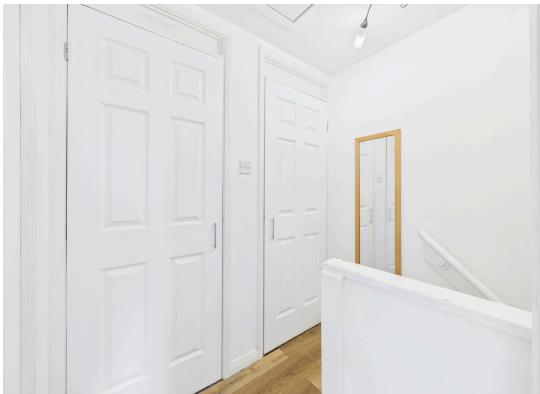
- Entrance Hallway
- Bright and spacious lounge
- Fully fitted kitchen with ample cupboard space
- Good Sized bedroom with storage space
- Family bathroom with shower over bath
- Large private garden
- Ample storage
- Allocated off street parking available

## Extras

All appliances included, oven, hob, fridge freezer, washing machine and dishwasher.

## Viewings

by appointment please call Gibson Estate Agents on 0131 2973177



# Location

Bughtlin is a attractive residential area located in the northwest of Edinburgh, Scotland. The area is known for its peaceful and serene atmosphere, making it an ideal place for families and young professionals.

Bughtlin is surrounded by lush greenery and stunning scenery, with many parks and open spaces nearby, such as the popular Cammo Country Estate.

The area is well connected to the rest of the city, with easy access to public transport links, including nearby bus routes and the Edinburgh Tram. Residents can enjoy a range of local amenities, with several supermarkets, shops, and restaurants in the vicinity. The area is also home to several well-regarded schools, making it an excellent choice for families with children.

Overall, Bughtlin offers a peaceful and picturesque location that is perfect for those who want to escape the hustle and bustle of city life while still enjoying easy access to all that Edinburgh has to offer.

