



DESCRIPTION

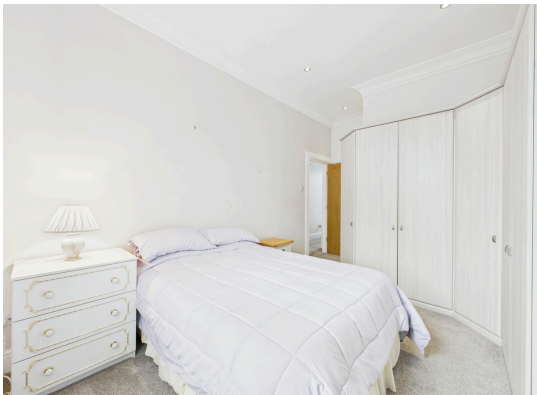
Nestled in the heart of the Livingston area, this spacious 2 Bedroom Mid-Terraced Bungalow offers the perfect blend of comfort and convenience.

The property benefits from ample living space with 2 bedrooms, living room leading into a beautifully bright kitchen, which has integral door leading to the private rear garden.

The property comprises of:

- Welcoming Hallway
- Well proportioned primary bedroom with fully fitted wardrobes
- Further second bedroom with fitted wardrobes
- Modern Shower Room with WC & Wash hand basin
- Spacious Living Room with lots of natural light shining through from rear window
- Stylish Fitted Kitchen with integrated appliances. Door from Kitchen leading to garden
- Private rear garden, astroturf fitted for low-maintenance and easy/enjoyable living.
- Additional space to the rear of this property, which can potentially be used for a drive way or extended garden

Don't miss the opportunity to make this charming bungalow your new home. Contact Gibson Estate Agents at 01506 414568 to arrange your viewing today.



Location

Livingston offers a superb selection of amenities with supermarkets, a cinema, bars, restaurants, sport and leisure facilities, banks, building societies and professional services. The town also boasts a fantastic array of shops from high street favourites to local retailers, as well as the Livingston Designer Outlet. The town is ideal for commuters with excellent links to the M8 motorway to Glasgow and Edinburgh, as well as frequent trains and buses running to these cities and surrounding towns. Livingston has excellent nursery, primary and secondary schools as well as West Lothian College.

