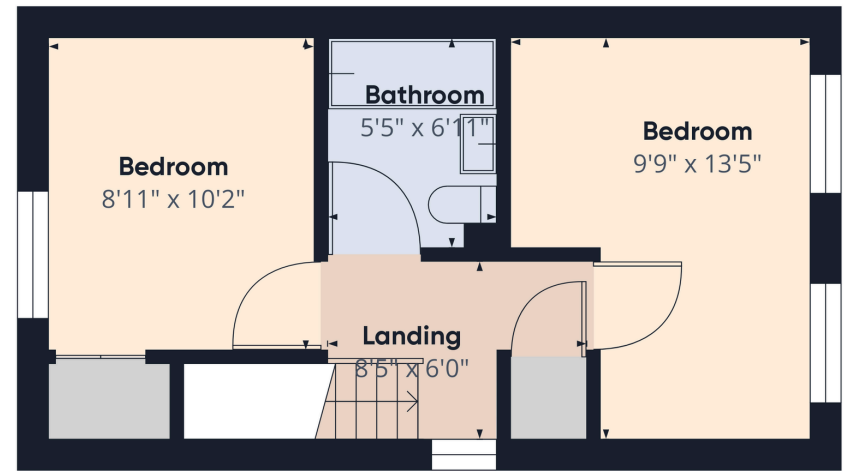




Floor 0



Floor 1



Description

Kilngate Brae is the perfect starter home offering ample living space both inside and out. The property has many selling points from the private rear garden to the driveway you don't want to miss out on this one!

Viewing is highly recommended!

The property comprises of :

- Entrance Hallway
- Lounge/diner
- Fitted kitchen with doors to garden
- Primary Bedroom with storage space
- Second double bedroom
- Family bathroom with shower over bath
- Private rear garden
- Driveway

Viewings by appointment with call now 0131 2973177



Location

Gilmerton is situated less than five miles south west of Edinburgh City Centre. Its a high amenity suburb with a selection of local shops nearby as well as Cameron Toll and Straiton shopping centre's a short drive away offering a number of well known high street stores as well as large supermarket's and convenient petrol stations. There is a good selection of local schooling as well as easy access to Edinburgh's private schools and Edinburgh University. The Royal Infirmary is also just over a mile away and there are a number of convenient bus services into the city centre and surrounding districts. For those looking to commute out of Edinburgh, the city bypass is within easy reach, connecting with the A1, A68, A7, Edinburgh Airport and the M8 and M9 Motorway Network.

