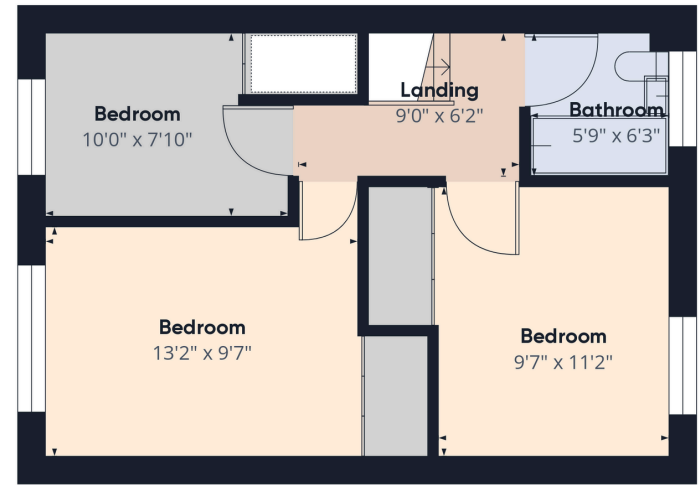


Floor 0



Floor 1



DESCRIPTION

Charming three-bedroom end-terraced villa.

This property is perfect for those looking for generous indoor and outdoor living spaces, complemented by picturesque countryside views that lend an open yet private atmosphere.

The newly fitted bathroom and kitchen are delightful additions to this home.

We highly recommend scheduling an early internal viewing.

The property features:

- Inviting hallway
- Bright and spacious lounge/diner
- Modern fitted kitchen
- Two double bedrooms with built-in wardrobes
- Third bedroom with ample storage
- Family bathroom with a shower over the bath
- Beautifully landscaped rear garden
- Off-street parking

Viewings available by appointment with Gibson Estate Agents at 0131 297 3177.



Location

Penicuik is a Midlothian town with a rural setting, a short drive from the Edinburgh City Bypass, and ideally placed for commuters. Penicuik has all the amenities expected of a sizeable town including a local shopping, a supermarket, post office, and a wide range of restaurants, pubs and cafes. There is are five primary schools and two secondary schools, also a library, and a Leisure Centre with a gym and swimming pool. Set between the Pentland Hills and River North Esk, the adjacent countryside allows for a wide range of outdoor pursuits including walks, country parks, cycling, golf courses, and the Hillend dry ski facility. The A701 and A702 offer extensive links North and South including, whilst there are also highly regular bus services into Edinburgh centre.

