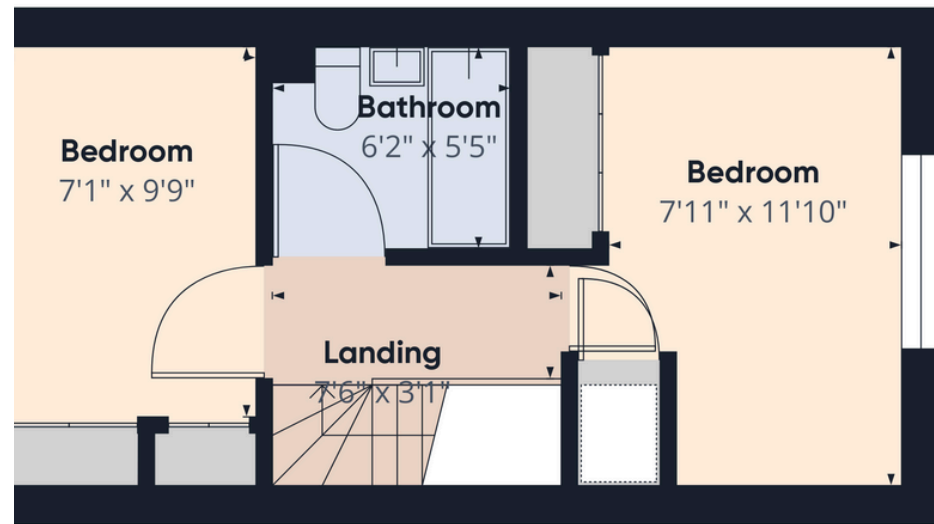


Floor 0



Floor 1



## Description

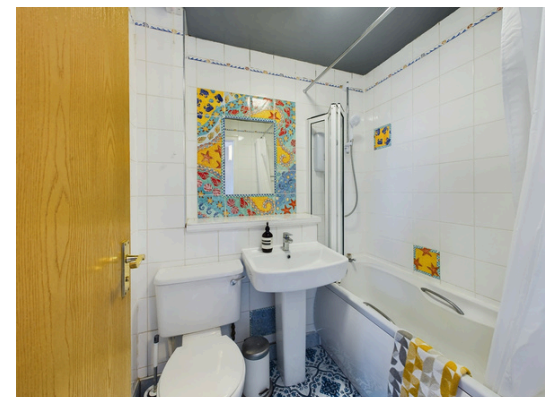
Beautiful Two Bedroom Mid Terrace Home New To The Market!

This mid terrace is an impressive modern space, complete with two bedrooms and neutral décor throughout that's move-in ready. You won't want to miss taking a look at this property.

The Property comprises of:

- Modern and well-fitted kitchen
- Bright and spacious lounge/diner with doors to garden
- Primary bedroom that comes with fitted wardrobes
- Second bedroom that also comes with fitted wardrobes
- Family bathroom
- Private garden located at the rear of the house
- Parking space available

Don't hesitate – book a viewing today to see this amazing property for yourself.



## Location

Gilmerton is situated less than five miles south west of Edinburgh City Centre. Its a high amenity suburb with a selection of local shops nearby as well as Cameron Toll and Straiton shopping centre's a short drive away offering a number of well known high street stores as well as large supermarket's and convenient petrol stations. There is a good selection of local schooling as well as easy access to Edinburgh's private schools and Edinburgh University. The Royal Infirmary is also just over a mile away and there are a number of convenient bus services into the city centre and surrounding districts. For those looking to commute out of Edinburgh, the city bypass is within easy reach, connecting with the A1, A68, A7, Edinburgh Airport and the M8 and M9 Motorway Network.

