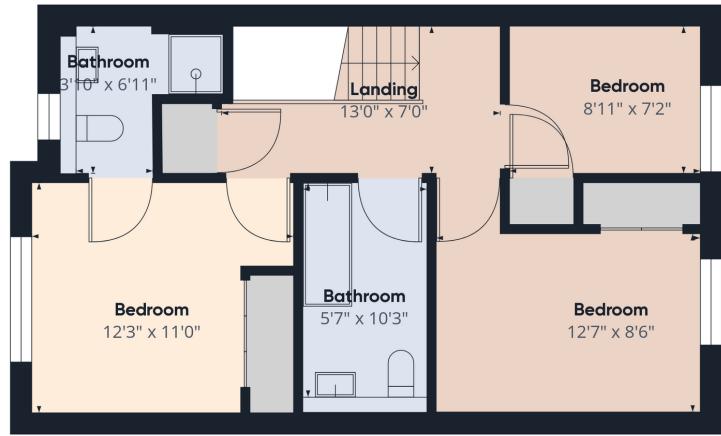


Floor 0



Floor 1



DESCRIPTION

Nestled in a quaint neighborhood, this stunning 3-bedroom end terrace property sets a new standard for modern living. Meticulously decorated to the highest standard, it boasts a contemporary décor that exudes style and sophistication.

To truly appreciate the beauty and charm of this exceptional property, schedule a viewing with Gibson's today. Experience a lifestyle of contemporary luxury in this inviting home.

- The Property Comprises of:
- Entrance vestibule with storage space
 - Welcoming hallway with WC and under stairs storage
 - Bright and spacious lounge with patio doors
 - The kitchen/diner lends itself as the hub of the home
 - Primary bedroom with en-suite and fitted wardrobes
 - Two further bedrooms with storage space
 - Family bathroom
 - Private rear garden
 - Parking available

Viewings by appointment with Gibson Estate Agents



Location

Penicuik has an excellent range of local facilities, including shops, a post office and outstanding primary and secondary schools. Only a short distance away the professional and cultural hub of Edinburgh also offers a selection of independent schools. Ideally positioned for outside recreation. The Pentland Hills Regional Park is popular for walking, mountain biking and fell running alike and is home to the Midlothian Ski Sports Centre. There are a number of local golf courses including Glencorse, Rutherford Castle and West Linton, with all the links courses of East Lothian easily accessible via the City Bypass. The property is well situated for access to the Edinburgh City Bypass, the city centre (8 miles) and Edinburgh Airport (12 miles). The bypass (4 miles) is to the north and gives access to the south, east and west of the city, the airport and the motorway network. The A702 provides a fast link to the M74 to the south.

