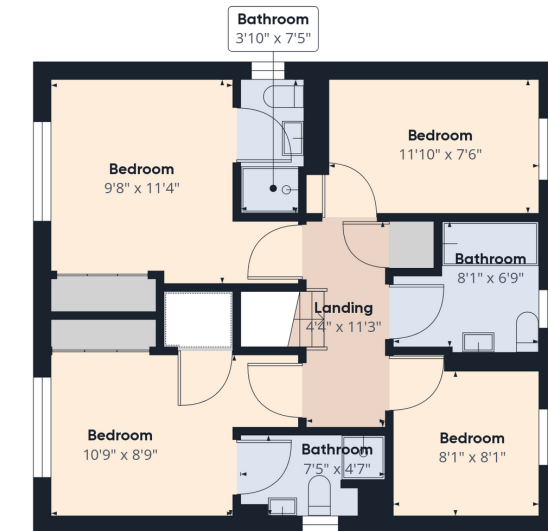




Floor 0



Floor 1



## DESCRIPTION

Spacious Family Home, with flexible living to suit your lifestyle. The property benefits from two en-suite shower rooms and single garage.

Early viewing is highly recommended to appreciate this property.

Located in the heart of the new and upcoming Calderwood development this property has everything and more to offer.

The Property Comprises of:

- Welcoming hallway
- Bright and spacious lounge
- Modern kitchen/diner with doors to garden
- Utility room with WC
- Primary bedroom with en-suite and fitted wardrobes
- Bedroom 2 with en-suite and fitted wardrobes
- Two further bedrooms
- Family bathroom
- Private rear garden with sunroom
- Driveway to single garage

Viewings by appointment with Gibson Estate Agents



## Location

East Calder is a beautiful village located in West Lothian, Scotland. It is situated approximately 10 miles west of Edinburgh city center, making it an ideal location for those who want to enjoy the tranquil countryside while still being close to the city. The new Calderwood development in East Calder offers a range of modern and stylish properties, including apartments, townhouses, and detached houses. The development is conveniently located close to local amenities, such as supermarkets, cafes, and restaurants. It is also in close proximity to schools and nurseries, making it an ideal location for families. The development has easy access to the M8 motorway, providing excellent transport links to Edinburgh and Glasgow. With its stunning views, peaceful surroundings, and excellent location, East Calder is the perfect place to call home.

