



**A STYLISH FOUR BEDROOM TWO BATHROOM HOME IN THE HEART OF
RICKMANSWORTH**

Ebury Road, Rickmansworth, Hertfordshire, WD3 1BJ

ROBSONS

Ebury Road, Rickmansworth, Hertfordshire, WD3 1BJ

**LOUNGE • DINING ROOM • KITCHEN •
PRINCIPAL BEDROOM WITH EN-SUITE • THREE
FURTHER BEDROOMS • FAMILY BATHROOM
• ATTRACTIVE REAR GARDEN • TOWN CENTRE
LOCATION • WALKING DISTANCE TO
RICKMANSWORTH STATION & SHOPS •
ORIGINAL FEATURES**

Description

This beautifully presented four-bedroom, two-bathroom terraced home located at the cul-de-sac end of the sought after Ebury Road offers stylish and contemporary living and is within 5 minutes walk to the Aquadrome and Ebury play area. The property is ideally located close to excellent schools, transport links, and local amenities.

This home welcomes you with a deep hallway leading to a front-aspect lounge featuring two windows that flood the space with natural light. A dining room seamlessly connects to a sleek, modern kitchen, which boasts an array of fitted units, integrated appliances, and a central island. The kitchen and sitting/playroom are enhanced by three skylights and French doors that open out to a beautifully landscaped garden. Completing the ground floor is a guest WC.





The first floor hosts a principal bedroom with fitted wardrobes, two further bedrooms and a stylish family bathroom. A fourth bedroom occupies the second floor, complete with an en-suite bathroom and convenient eaves storage.

Externally, the rear south-facing garden is attractively designed with low-maintenance AstroTurf and features two terraces, perfect for al fresco dining and outdoor entertaining.

Location

Rickmansworth town centre has a wide range of boutique shops, coffee houses, restaurants and major supermarkets. The Metropolitan and Chiltern line train services connect you to London Baker Street, Marylebone Station and beyond. The M25 motorway is available at both junction 17 and 18, connecting you to the national motorway network. Major London airports are also within reach. The area is well served for good quality private and state schools for all ages. Chorleywood and Rickmansworth offer everything for the sporting individual from rugby, cricket, football, tennis, horse riding and golf. Rickmansworth Aquadrome is an ideal setting for walks, sailing, fishing and water skiing.

Additional Information

Tenure: Freehold

Local Authority: Three Rivers District Council

Council Tax Band: E

Energy Efficiency Rating: D

For additional information, please refer to www.robsonsworld.com or call us on: 01923 777762.



Approximate Gross Internal Area
 Ground Floor = 52.9 sq m / 569 sq ft
 First Floor = 39.9 sq m / 429 sq ft
 Second Floor = 21.1 sq m / 227 sq ft
 Total = 113.9 sq m / 1,225 sq ft

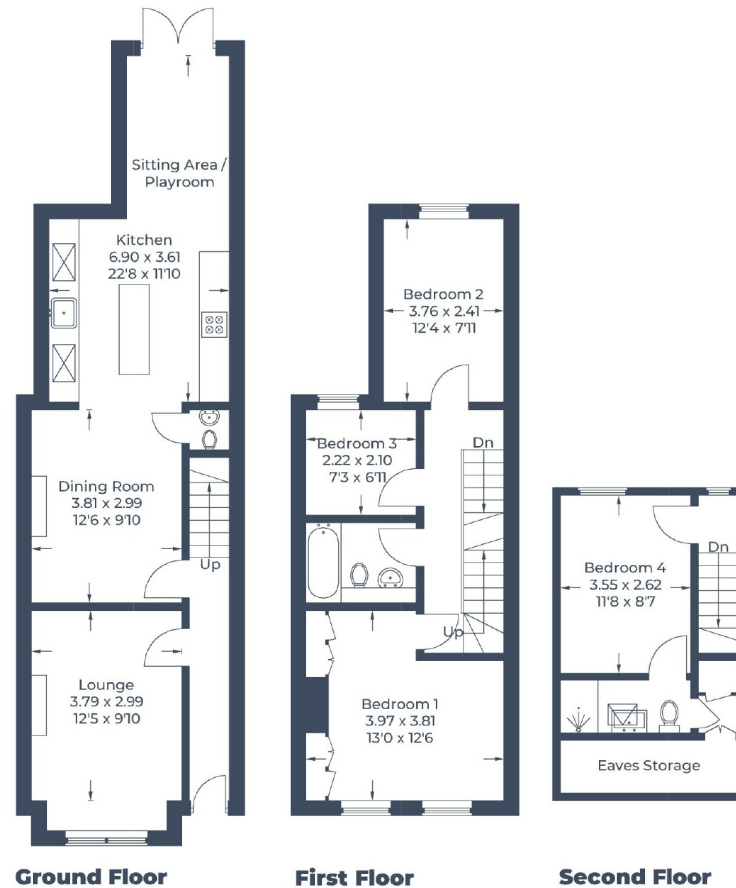


Illustration for identification purposes only,
 measurements are approximate, not to scale.
 © CJ Property Marketing Produced for Robsons

ROBSONS

130 High Street, Rickmansworth WD3 1AB
 Tel: 01923 777762 Email: rickmansworth@robsonswb.com
www.robsonswb.com

SCAN TO VISIT



OUR WEBSITE

Important notice: Robsons, their clients and any joint agents give notice that 1: They are not authorised to make or give any representations or warranties in relation to the property either here or elsewhere, either on their own behalf or on behalf of their client or otherwise. They assume no responsibility for any statement that may be made in these particulars. These particulars do not form part of any offer or contract and must not be relied upon as statements or representations of fact. 2: Any areas, measurements or distances are approximate. Plot sizes and dimensions are taken from Promap and are approximate. The text, photographs and plans are for guidance only and are not necessarily comprehensive. It should not be assumed that the property has all necessary planning, building regulation or other consents and Robsons have not tested any services, equipment or facilities. Purchasers must satisfy themselves by inspection or otherwise.