



AN ATTRACTIVE THREE BEDROOM, TWO BATHROOM EXTENDED FAMILY HOME

Highfield Way, Rickmansworth, Hertfordshire, WD3 7PR

ROBSONS

Highfield Way, Rickmansworth, Hertfordshire,
WD3 7PR

**LIVING ROOM • KITCHEN/BREAKFAST ROOM
• UTILITY ROOM • CONSERVATORY • OFFICE
• DOWNSTAIRS SHOWER ROOM • THREE
BEDROOMS • FAMILY BATHROOM &
SEPARATE WC • REAR GARDEN • OFF STREET
PARKING**

Description

A bright and well-maintained three bedroom, two bathroom extended family home located on the sought-after Cedars Estate, with an attractive rear garden and off-street parking for two cars. This lovely property enjoys a convenient location, being within walking distance to excellent transport links, local amenities and highly regarded schools.

The ground floor comprises an entrance hallway with stairs to the first floor and a guest shower room. There is a front aspect living room with bay window, which flows through to an open-plan, light-filled kitchen/breakfast room. The kitchen offers modern fitted units and integrated appliances with the added benefit of a separate utility room. Off the kitchen is a spacious conservatory with French doors opening out to the garden. Completing the ground floor is an office.





To the first floor there are three well-appointed double bedrooms, with two boasting fitted wardrobes, a family bathroom with access to a storage cupboard and a separate WC.

Externally, this delightful home offers an attractive and private rear garden laid to lawn with established shrubs and hedges and a patio area. To the front is a driveway providing off-street parking for two cars and side access to the rear garden.

Location

Rickmansworth town centre has a wide range of boutique shops, coffee houses, restaurants and major supermarkets. The Metropolitan and Chiltern line train services connect you to London Baker Street, Marylebone Station and beyond. The M25 motorway is available at both junction 17 and 18, connecting you to the national motorway network. Major London airports are also within reach. The area is well served for good quality private and state schools for all ages. Chorleywood and Rickmansworth offer everything for the sporting individual from rugby, cricket, football, tennis, horse riding and golf. Rickmansworth Aquadrome is an ideal setting for walks, sailing, fishing and water skiing.

Additional Information

Tenure: Freehold

Local Authority: Three Rivers District Council

Council Tax Band: F

Energy Efficiency Rating: D

For additional information, please refer to



Approximate Gross Internal Area
Ground Floor = 92.7 sq m / 997.7 sq ft
First Floor = 60.0 sq m / 646.3 sq ft
Total = 152.7 sq m / 1644 sq ft

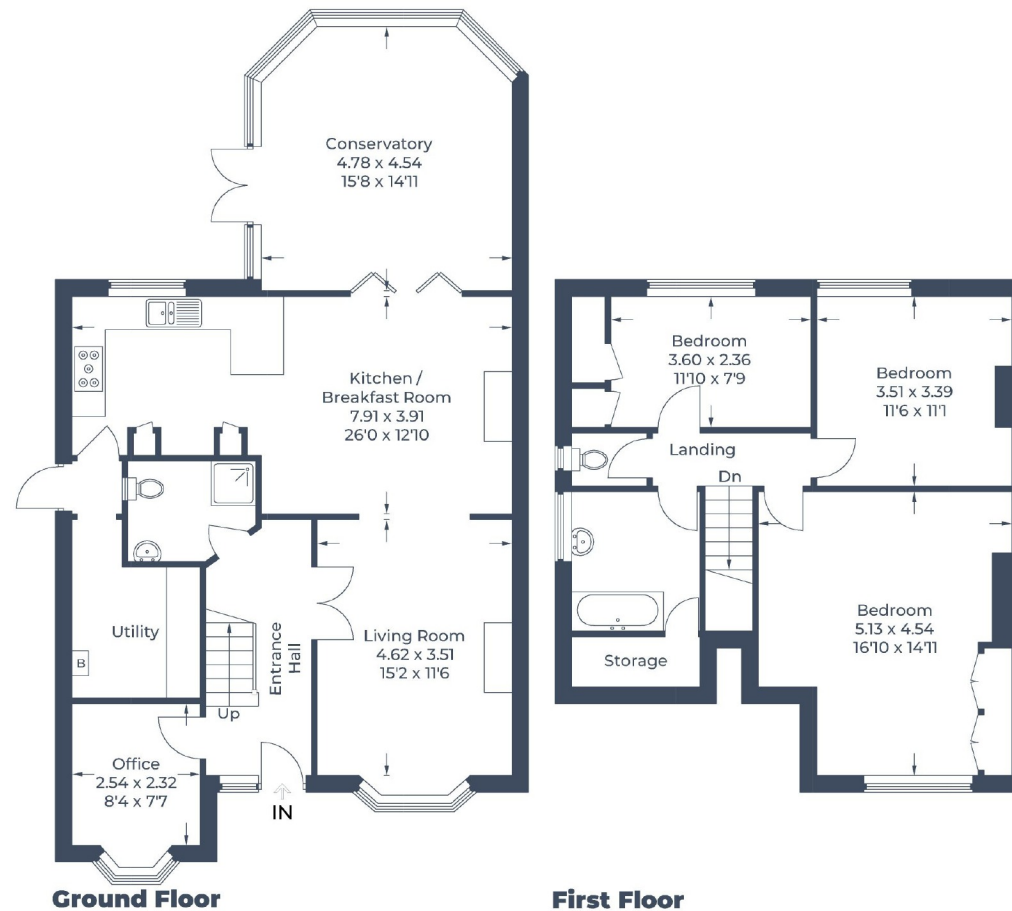


Illustration for identification purposes only,
measurements are approximate, not to scale.
© CJ Property Marketing Produced for Robsons

ROBSONS

130 High Street, Rickmansworth WD3 1AB
Tel: 01923 777762 Email: rickmansworth@robsonsweb.com
www.robsonsweb.com

Important notice: Robsons, their clients and any joint agents give notice that 1: They are not authorised to make or give any representations or warranties in relation to the property either here or elsewhere, either on their own behalf or on behalf of their client or otherwise. They assume no responsibility for any statement that may be made in these particulars. These particulars do not form part of any offer or contract and must not be relied upon as statements or representations of fact. 2: Any areas, measurements or distances are approximate. Plot sizes and dimensions are taken from Promap and are approximate. The text, photographs and plans are for guidance only and are not necessarily comprehensive. It should not be assumed that the property has all necessary planning, building regulation or other consents and Robsons have not tested any services, equipment or facilities. Purchasers must satisfy themselves by inspection or otherwise.